



AV Connectivity, Distribution
And Beyond....

VIDEO WALLS VIDEO PROCESSORS
VIDEO MATRIX SWITCHES
EXTENDERS SPLITTERS WIRELESS
CABLES & ACCESSORIES

FIRMWARE GUIDE FOR THE SDI-SPLITPRO-4S



ABOUT THIS DOCUMENT

This document specifies the versions of firmware, software and the recommended steps to update and to introduce the new features.

Software Version **v1.8**
Firmware Version **v1.10**

The firmware and software versions listed in this document have been tested as a single unit and multi cascade solution and are fully supported by Avenview.

It is recommended that users read this entire document before attempting the firmware update to the SDI-SPLITPRO-4S and fully understand all the steps and procedures outlined in this document.

This document was last updated 06/27/2014

- Report any bug issues to:- support@avenview.com



WARNING –This Firmware Upgrade will erase all current settings saved in the SDI-SPLITPRO-4S. Please record all your settings and layout sizes before you attempt to perform the firmware upgrade.

GENERAL INSTRUCTIONS

1. Before you begin the firmware upgrade ensure the SDI-SPLITPRO-4X is connected to AC power and your PC via the supplied USB to RS-232 cable.
2. PC Requirements-Windows® XP/Windows Vista®/Windows® 7/Windows® 8
3. Ensure your Laptop or desktop is plugged in to AC power during the update process. It is not recommended to use only battery power during the upgrade. Do not remove power at any time during the firmware update process as this could lead to incomplete results.

USA
Avenview Corp.
275 Woodward Avenue, NY 14217

Ph: 866.508.0269 Ph: 716.218.4100 Fax: 866.387.8764

CANADA
Avenview
151 Esna Park Drive, Units 11 & 12, Markham, ON L3R 3B1

Ph: 866.508.0269 Ph: 905.907.0525 Fax: 866.387.8764



AV Connectivity, Distribution
And Beyond....

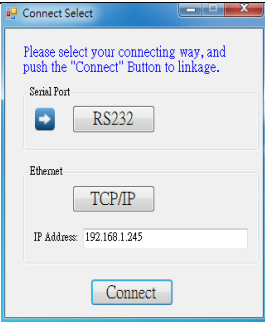
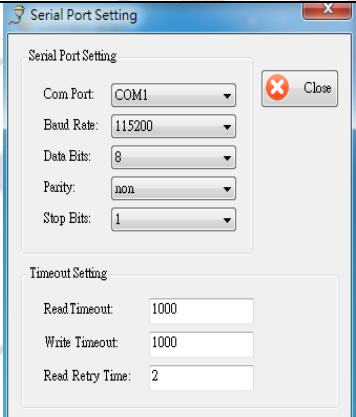
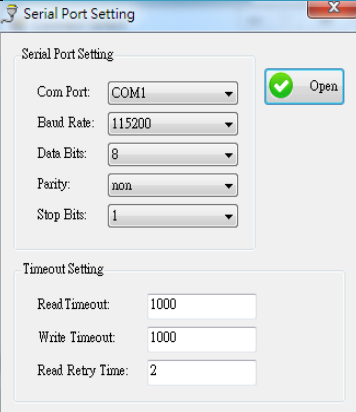
VIDEO WALLS VIDEO PROCESSORS
VIDEO MATRIX SWITCHES
EXTENDERS SPLITTERS WIRELESS
CABLES & ACCESSORIES

FIRMWARE UPGRADE

1. Download the new firmware from the Avenview website > SDI-SPLITPRO-4S > SOFTWARE

Download Link- www.Avenview.com/imgs/Setup_SD-SPLITPRO-4S_VI.8.exe

2. Follow the Setup instructions from the install wizard.
3. When the install is complete; Click on the desktop icon.
4. This will launch Avenview Control Software. It will open following "Connect Select" setting page.

<p>Start the Operation Software</p> <ol style="list-style-type: none"> 1. Click the .exe file. 2. The dialog box will pop-up. 3. Two ways to control device RS232 and TCP/IP (under Microsoft Windows 7, please setting this program as an administrator). <p>Note: First initial setup please connect via RS-232</p>	
<p>Please choose the connection Type :-</p> <ol style="list-style-type: none"> 1. RS-232 <p>RS232 Mode: Select "RS232" button, the dialog box will pop-up. Select correct Com port. If your setting is correct and the device is ready. It will enter directly to control dialog.</p>	
<p>Select correct Com port. If your setting is correct and the device is ready. It will enter directly to control dialog</p>	

USA
Avenview Corp.
275 Woodward Avenue, NY 14217

Ph: 866.508.0269 Ph: 716.218.4100 Fax: 866.387.8764

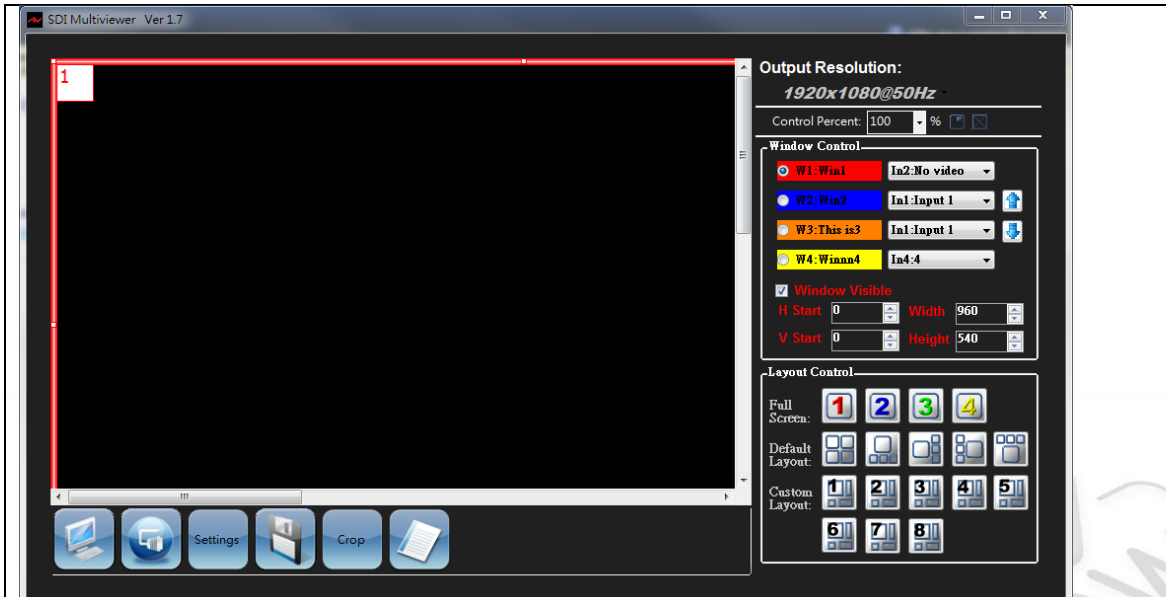
CANADA
Avenview
151 Etna Park Drive, Units 11 & 12, Markham, ON L3R 3B1

Ph: 866.508.0269 Ph: 905.907.0525 Fax: 866.387.8764

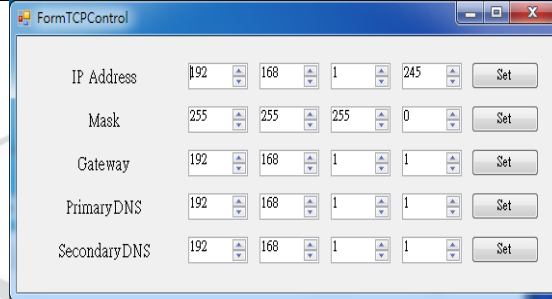


AV Connectivity, Distribution
And Beyond....

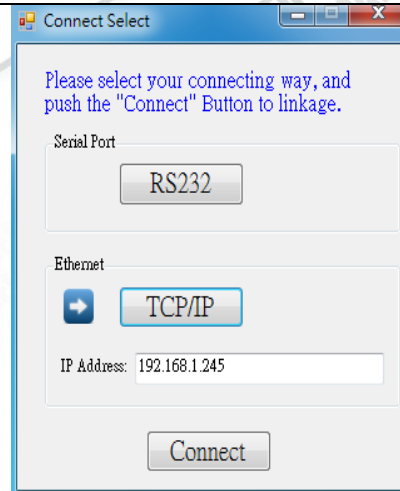
**VIDEO WALLS VIDEO PROCESSORS
VIDEO MATRIX SWITCHES
EXTENDERS SPLITTERS WIRELESS
CABLES & ACCESSORIES**



TCP configure setting, we recommend you set via RS232 cable.



Click Port setting: To choose the means of communicating with the device TCP/IP Dialog box will Pop Up
"Connect Select" dialog, user can select the TCP/IP after connecting via RS-232 to start Enter the IP address you have configured in the Table.



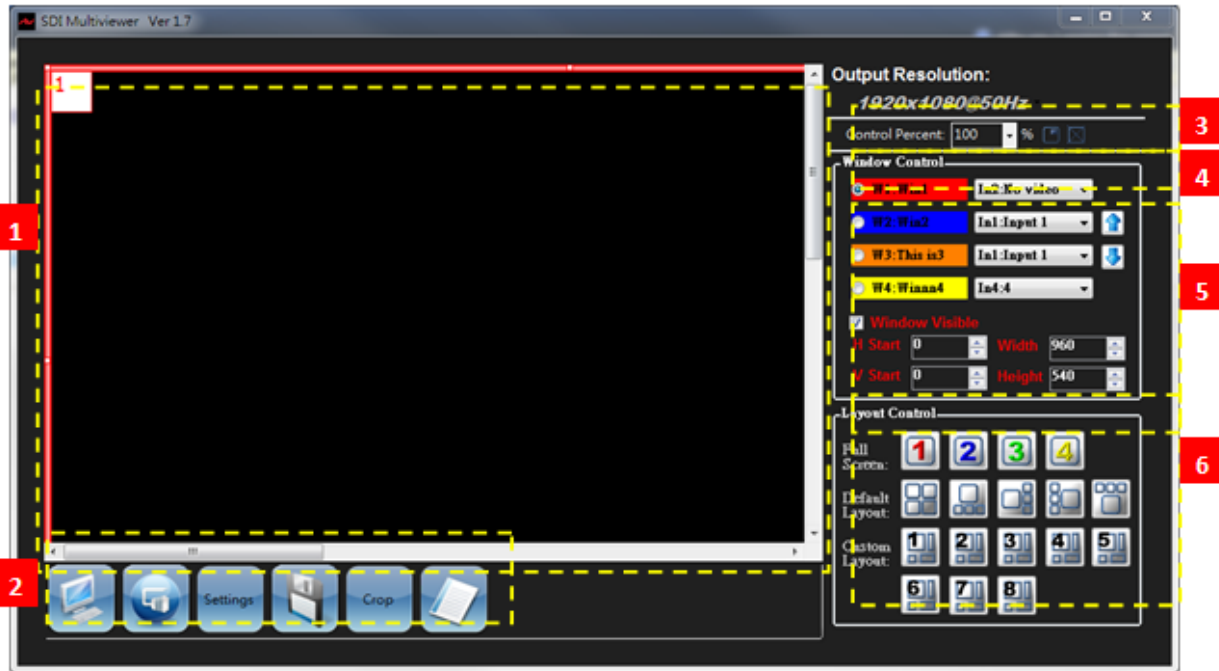
USA
Avenview Corp.
275 Woodward Avenue, NY 14217

Ph: 866.508.0269 Ph: 716.218.4100 Fax: 866.387.8764

CANADA
Avenview
151 Esna Park Drive, Units 11 & 12, Markham, ON L3R 3B1




Ph: 866.508.0269 Ph: 905.907.0525 Fax: 866.387.8764

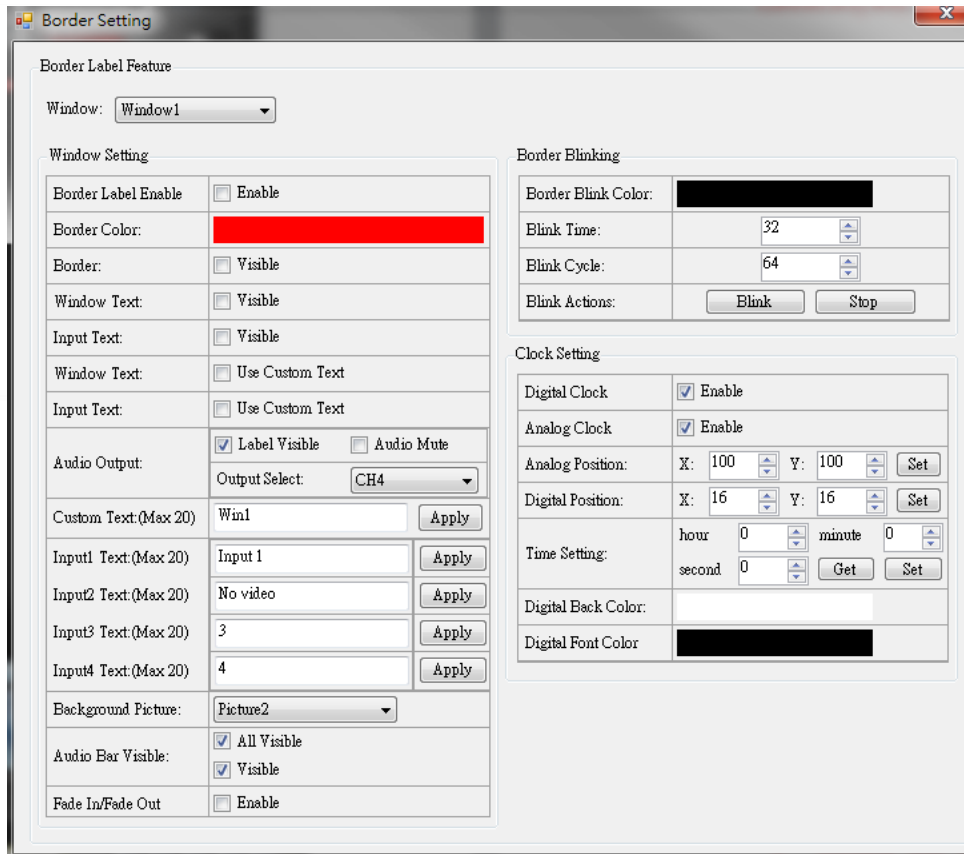
INSTRUCTION OF SOFTWARE CONNECTION WITH RS232



1. PAP Panel: Display and adjust the window size and position.
2. Tool Bar List:



- (1) : Retrieve all information of the device and update the software state.
- (2) : Port setting: Pop-up the "Connect Select" dialog.
- (3) : Initialize the Setting POP-Up window



- **Window drop-down list:** Setting for window 1 ~4.
- **Window Setting**
- **Border Label Enable:** Enable all windows' label and border visible.
- **Border Color:** Change the border color of window which you want.
- **Border:** Display the border or not.
- **Window Text:** Display the window text or not.
- **Input Text:** Display the input text or not.
- **Window Text:** Reveal the windows text which you are setting in the custom text.
- **Input Text:** Reveal the input text which you are setting in the input custom text.
- **Audio Output:** you can select which input audio as output, can mute, and can select audio information label show or not.
- **Custom Text (Max 20):** To set up the window text to be visible in the window. The length of text string (Max 20).
- **Input Custom Text Setting:** Setting the input text which you want to show in the window. The length of text string (Max 20).
- **Background Picture:** Change background picture or close.

USA
Avenview Corp.
275 Woodward Avenue, NY 14217

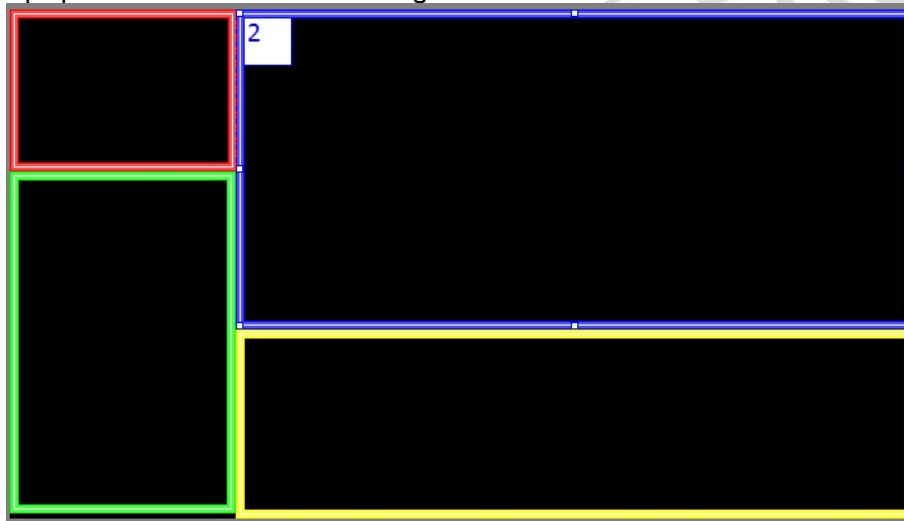
Ph: 866.508.0269 Ph: 716.218.4100 Fax: 866.387.8764

CANADA
Avenview
151 Esna Park Drive, Units 11 & 12, Markham, ON L3R 3B1

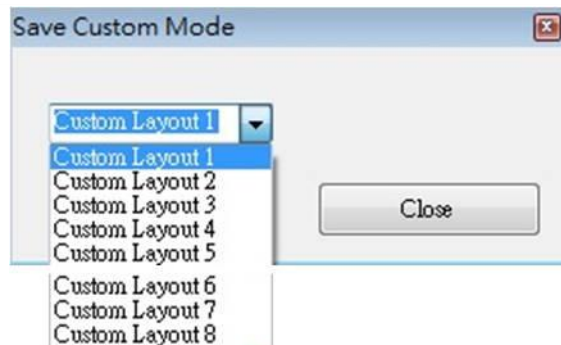
Ph: 866.508.0269 Ph: 905.907.0525 Fax: 866.387.8764

- Audio Bar Visible:** Audio bar will be visible only when all visible and it is visible.
- Fade in/Fade out:** Effect of it will show when make an input selection.
- Border Blink Color:** Change the color of the window border which you want to blink.
- Blink Time:** Setting the blink time of border blink.
- Blink Cycle:** Setting the blink cycle of border blink. If you want to stop the border blink, you can click the stop button.
- Blink Actions:** To start blinking or to stop blinking.
- Background Picture:** To set up the background picture of window.
- Digital Clock:** Enable the digital clock show.
- Analog Clock:** Enable the analog clock show.
- Analog position:** Set analog clock position.
- Digital position:** Set digital clock position.
- Time Setting:** Setting system clock time.
- Digital Back Color:** Set the color of background of digital clock.
- Digital Font Color:** Set the color of font of digital clock

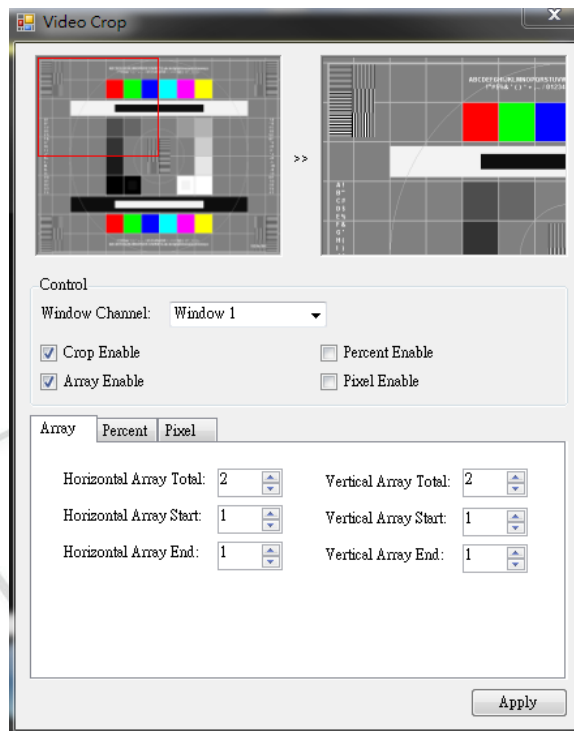
- (4) : Pop-up the "Save Custom Mode" dialog.



User can adjust the window size and position, based on your desired output, users can save the different PAP mode in custom layout.



(5) Crop Function: Pop-up the “Crop Video” dialog



Picture Box: It is preview the range and effect of video crop with the adjustment.

Window Channel: Choose the window to crop the video.

Crop Enable: Enable crop function

Array Enable: Enable array parameter.

Percent Enable: Enable percent parameter.



AV Connectivity, Distribution
And Beyond....

VIDEO WALLS VIDEO PROCESSORS
VIDEO MATRIX SWITCHES
EXTENDERS SPLITTERS WIRELESS
CABLES & ACCESSORIES

Pixel Enable: Enable pixel parameter

Array Tab:

Array	Percent	Pixel	
Horizontal Array Total:	2	Vertical Array Total:	2
Horizontal Array Start:	1	Vertical Array Start:	1
Horizontal Array End:	1	Vertical Array End:	1



Horizontal Array Total = 3	Vertical Array Total = 3
Horizontal Array Start = 1	Vertical Array Start = 1
Horizontal Array End = 2	Vertical Array End = 2

USA
Avenview Corp.
275 Woodward Avenue, NY 14217

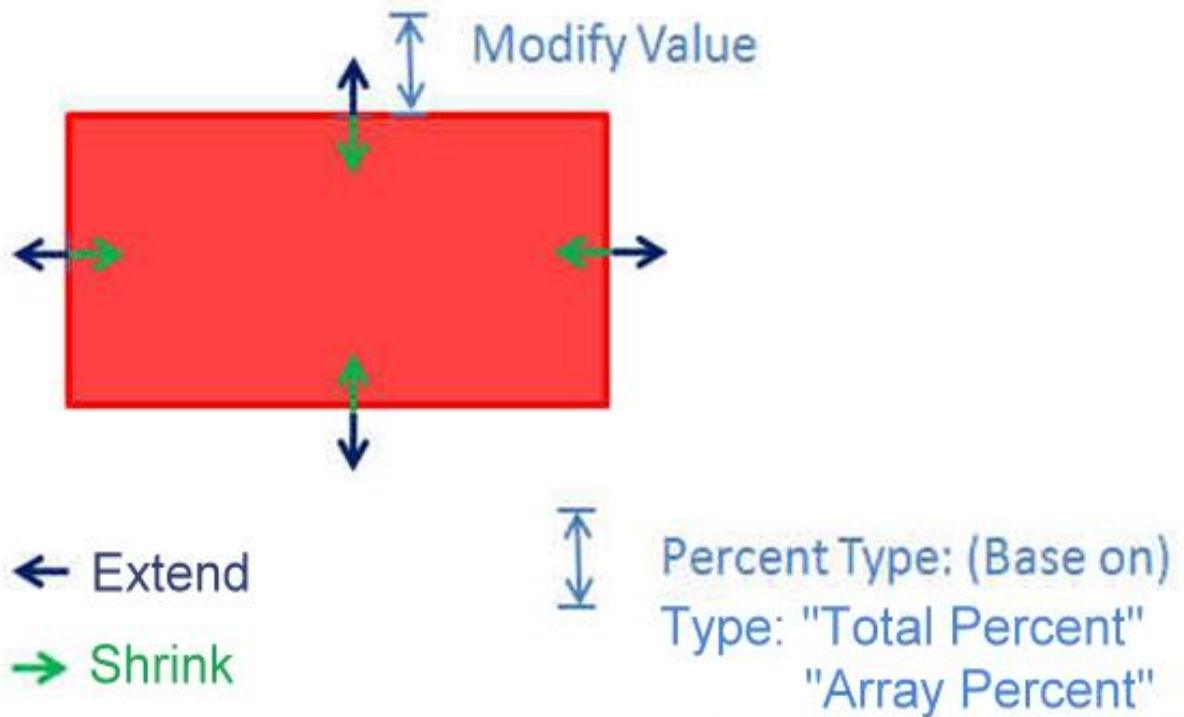
Ph: 866.508.0269 Ph: 716.218.4100 Fax: 866.387.8764

CANADA
Avenview
151 Esna Park Drive, Units 11 & 12, Markham, ON L3R 3B1

Ph: 866.508.0269 Ph: 905.907.0525 Fax: 866.387.8764

Percent Tab:


Array	Percent	Pixel	
Type:	<input checked="" type="radio"/> Total Percent	<input type="radio"/> Array Percent	
Top:	<input checked="" type="radio"/> Shrink	<input type="radio"/> Extend	10
Bottom:	<input checked="" type="radio"/> Shrink	<input type="radio"/> Extend	10
Left:	<input checked="" type="radio"/> Shrink	<input type="radio"/> Extend	0
Right:	<input checked="" type="radio"/> Shrink	<input type="radio"/> Extend	0



Pixel Tab:

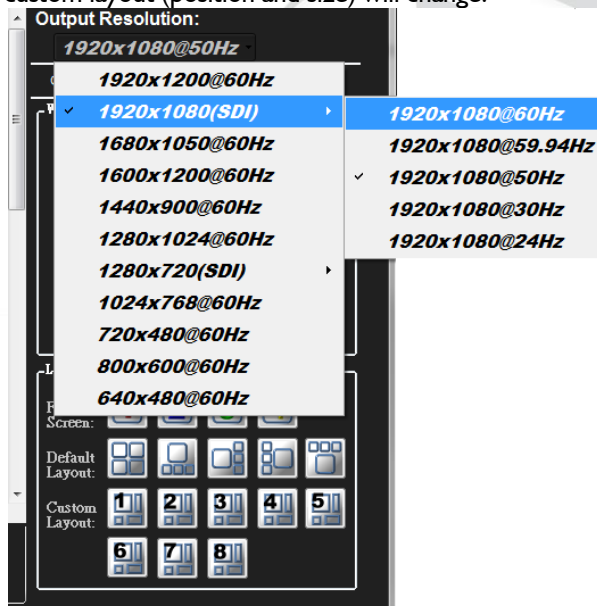
Array	Percent	Pixel
Top:	<input checked="" type="radio"/> Shrink <input type="radio"/> Extend	0
Bottom	<input checked="" type="radio"/> Shrink <input type="radio"/> Extend	0
Left	<input checked="" type="radio"/> Shrink <input type="radio"/> Extend	0
Right	<input checked="" type="radio"/> Shrink <input type="radio"/> Extend	0

“Pixel” and “Percent” crop are almost same. It is different from modify value.

- (6)  : Version, click this button to show version information.



3. Output Resolution: Set the output resolution. When set the different resolution, the parameters of PAP and custom layout (position and size) will change.



4.

USA
Avenview Corp.
275 Woodward Avenue, NY 14217

Ph: 866.508.0269 Ph: 716.218.4100 Fax: 866.387.8764

CANADA
Avenview
151 Esna Park Drive, Units 11 & 12, Markham, ON L3R 3B1

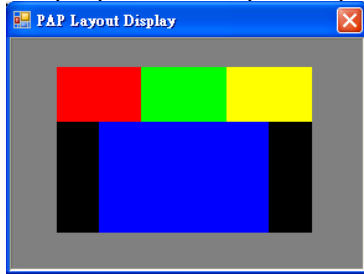
Ph: 866.508.0269 Ph: 905.907.0525 Fax: 866.387.8764


5. Control Bar: For PAP Panel Setting.




6. Control Percent: 10~100% to set the PAP Panel display/control size.


7.  : Pop-Up the "PAP Layout Display" Dialog



(1)  : Fix the size ratio when the window is resizing.

8. PAP Mode Control / Input Selection

(1) Default Window:  **Window 1** The default window for set the visible, position, size, polarity and default layout.

(2) Input Selection:  **Input 1** Set the window image is which input signal.

(3) Window Polarity:  Set the major window layer polarity in "PAP Mode".

(4) Window Visible: **Window Visible** Set the window visible in "PAP Mode".



(5) Window Position and Size: Set the window position and size in "PAP Mode".

9. Full Screen / PAP Mode

(1) Full Screen: Set the major window to full Screen.

 Set Window 1 Full Screen

 Set Window 2 Full Screen

 Set Window 3 Full Screen

 Set Window 4 Full Screen

(2) PAP Mode: Set to last PAP layout.

● Default Layout:  Set the default position and size with icon picture. The "major window" will be the largest size in the icon.

● Custom Layout: 



AV Connectivity, Distribution
And Beyond....

VIDEO WALLS VIDEO PROCESSORS
VIDEO MATRIX SWITCHES
EXTENDERS SPLITTERS WIRELESS
CABLES & ACCESSORIES

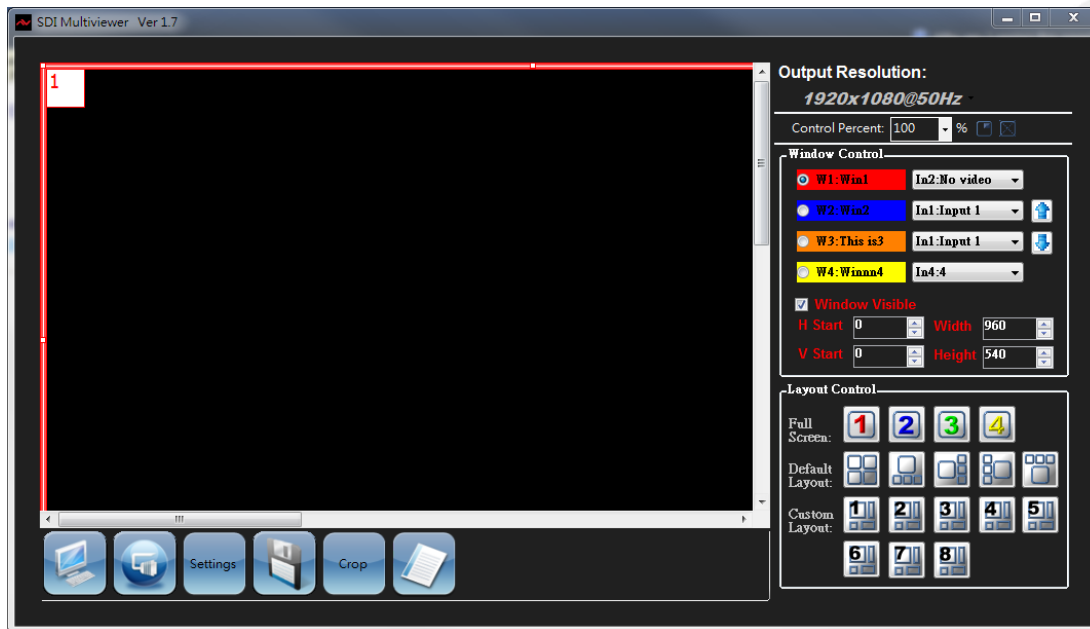
- Set the custom layout by customize saving with “Tool Bar List” .

Instruction of Software Connection (connect with TCP/IP)

After setting the correct TCP/IP information, it is recommended to reboot the device.

The settings will not take and connection will fail.

If the connection of TCP/IP is successful the pop-up the window will display as below.



USA
Avenview Corp.
275 Woodward Avenue, NY 14217

Ph: 866.508.0269 Ph: 716.218.4100 Fax: 866.387.8764

CANADA
Avenview
151 Esna Park Drive, Units 11 & 12, Markham, ON L3R 3B1

Ph: 866.508.0269 Ph: 905.907.0525 Fax: 866.387.8764

Group Control

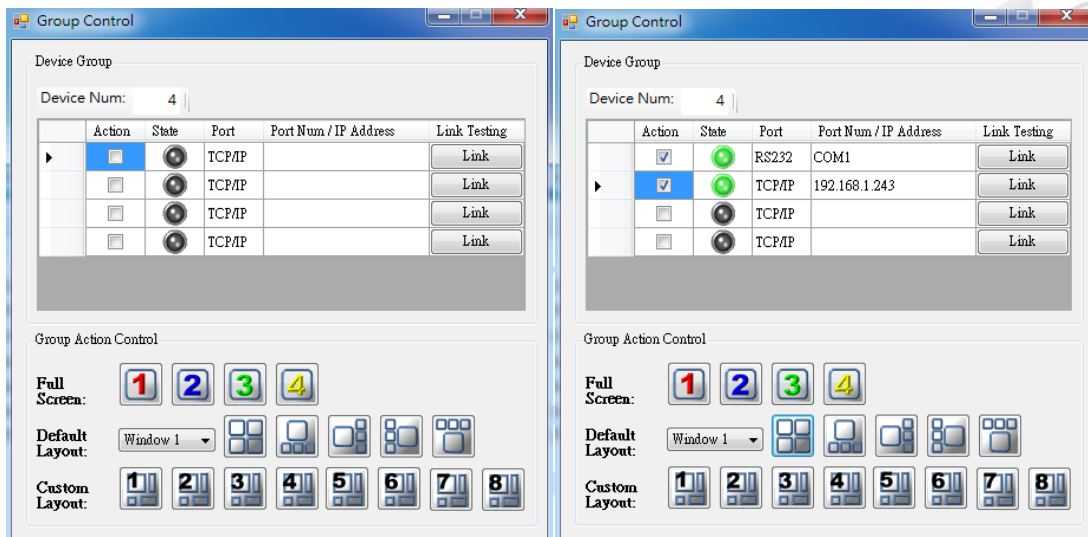
Action: The checked devices will action when you click the button in the “Group Action Control”

State: The device is under control or not.

“Port” or “Port Num / IP Address”:

You can click to set the “RS232” and “TCP” and it will display the state.

Link: Retry to link the device, when the device isn’t on control.



Tools

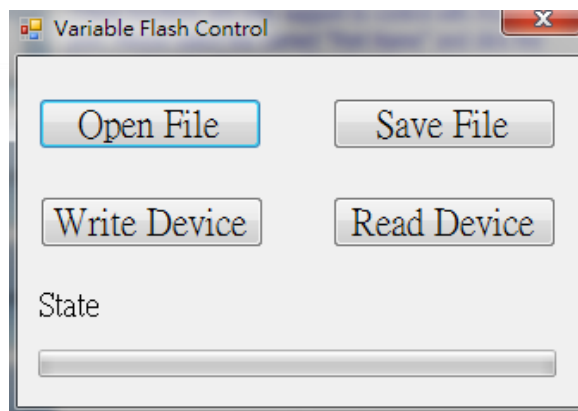
Note there are differences between connection with RS232 and TCP/IP.

Using TCP/IP, the function is limit to set up the flash setting, image update and firmware update.

But the other function user can follow the instruction manual of the RS232



: Device flash Setting, it will pop-up the “Variable Flash Control” dialog.



Step 1: Click the “Read Device” button to read this device information back .

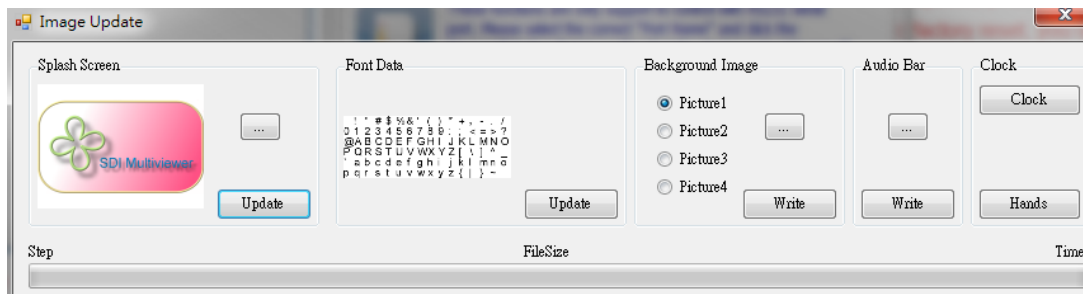
Step 2: Save the device information to bin file.

Step 3: If user have other device want to set the same mode, they can click the ”Open File” button to open the bin file.

Step 4: Write the bin file to other device.



: Image updating, it shall be pop-up the “Image Update” dialog. User can set up the image information for this device.



- Splash Screen: change the startup screen for the software.
- Font Data: To set up the display font.
- Background Image: User can install the picture into the device.
- Audio Bar: User can update audio bar image.
- Clock: Update the clock image with initial image in “.\Resource”.
- Hand: Update the hands image with initial images in “.\Resource”.



: Firmware update, click this button, the pop-up “Firmware update” dialog. User can select this to update the firmware of the device.

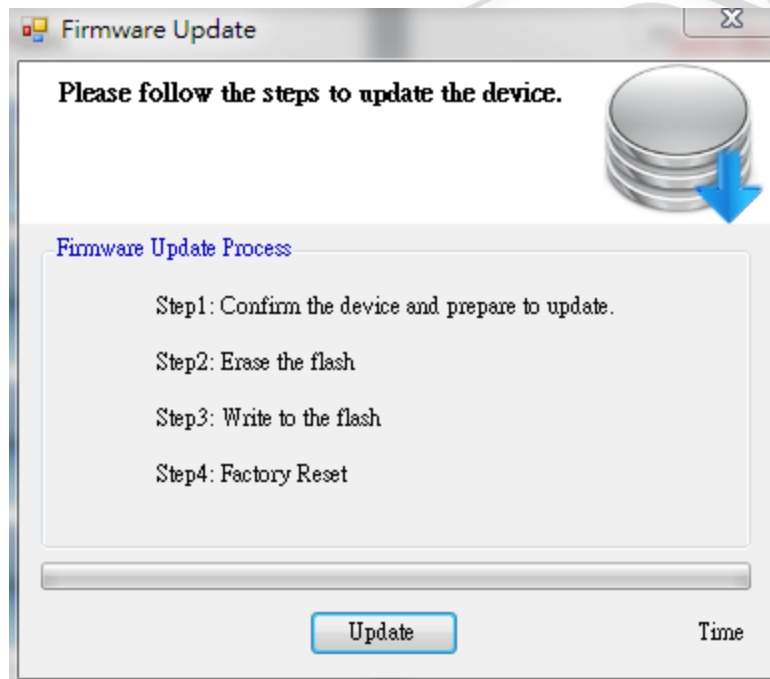
Step 1: Choose you firmware file.

Generally the firmware file is located in the folder called FW, which is in the folder destination installed.

Step 2: After you choose your firmware file, then it would instruct you to reboot device. The unit will then proceed to update.

Step 3: After update, a reboot is required to initiate factory reset.

Step 4: After factory reset, you should reboot to let settings work.





AV Connectivity, Distribution
And Beyond....

VIDEO WALLS VIDEO PROCESSORS
VIDEO MATRIX SWITCHES
EXTENDERS SPLITTERS WIRELESS
CABLES & ACCESSORIES



Avenview Inc. reserves the right to make changes without further notice to a product or system described herein to improve reliability, function or design. With respect to Avenview products which this document relates, Avenview disclaims all express or implied warranties regarding such products, including but not limited to, the implied warranties of merchantability, fitness for a particular purpose, and non-infringement.

USA

Avenview Corp.
275 Woodward Avenue, NY 14217

Ph: 866.508.0269 Ph: 716.218.4100 Fax: 866.387.8764

CANADA

Avenview
151 Esna Park Drive, Units 11 & 12, Markham, ON L3R 3B1

Ph: 866.508.0269 Ph: 905.907.0525 Fax: 866.387.8764