



Control Your Video

VIDEO WALL VIDEO PROCESSORS  
MULTIVIEWERS DIGITAL SIGNAGE  
EXTENDERS CONTROL CENTERS  
SCALERS WIRELESS



**HDM-AVXWALL**

AVAILABLE MODELS IN:

4X4 | 4X12 | 4X8 | 8X8

8X12 | 12X12 | 8X16 | 16X16 | 32X32



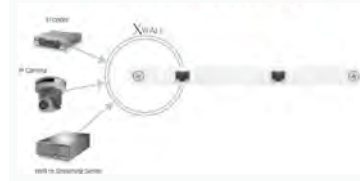
## HDM-AVXWALL is Designed for:

- Control Rooms • Security and Traffic • Monitoring • Video Conferencing
- Board Rooms • Public Information • Digital Signage

## HDM-AVXWALL Features:

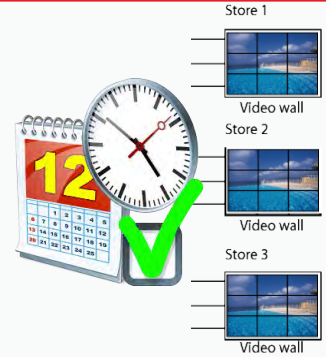
- Scales up to 72 synchronized/framelocked displays in Digital Scale Mode;
- 4K, Full HD input and output resolutions;
- Up to 128 Digital Inputs, 72 Digital Outputs;
- Robust network Telnet API enables a variety of control options for video walls;
- Pure hardware structure without operating system;
- 2/4/8/13/19U size chassis for high-density, scalable video wall solutions.

### IP Media Stream Decoding



Receive media streams from multiple edge devices (IP cameras, encoders, media servers, etc.)

### Task Scheduler



Easily automate displayed content on the video wall.

### Simple Frame Positioning



Seamlessly manage and control frames position.

### Variable Input/Output Configurations

Chassis	Digital Scale	Analog Scale
2U	8 X 8	32 X 8
4U	16 X 16	64 X 16
8U	32 X 36	128 X 36
13U	64 X 72	256 X 72
19U	128 X 72	512 X 72

Available Chassis and Variable Input/Output Configurations.

### Drag and Drop Capability



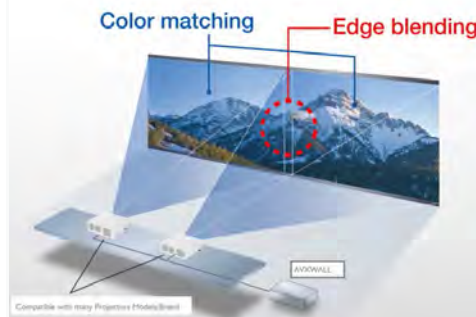
Easily drag and drop sources to different available outputs. (using PC software or iPad app)

### No Frame Loss - Real Time Viewing



No graphic lag with 60Hz refresh rate.

### Edge Blending



Intuitively adjust the number of overlapping pixels between edge blending projectors to create a seamless, unified image. (works with compatible projectors)

### Seamless Switching



No black image or delay between switching sources.

## Video Wall Control Software

AVX-ControlPro for Windows is an intuitive, feature-rich application that allows you to manage your HDM-AVXWALL-XxX powered video wall. Run the software locally or remotely, use it to create, save and, or edit layouts offline or in real time so your source content appears precisely where you want it, how you want it and when you want it.

### Control Pro Features

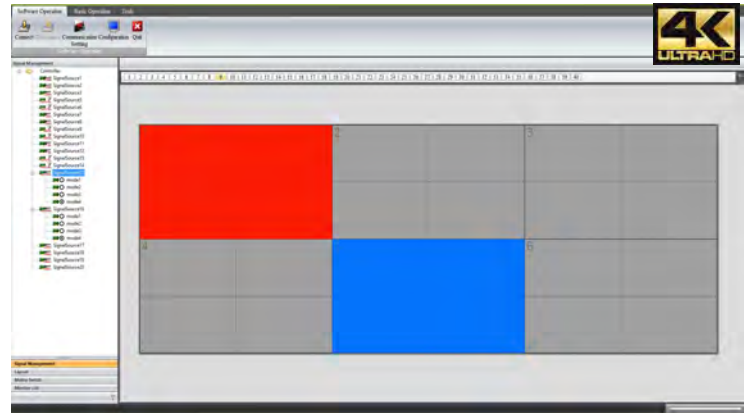
- Position windows anywhere on the wall using a mouse or keyboard
- Resize a window precisely by entering the custom input size Use four separate fields to enter custom input size or click and drag a window corner to maintain the aspect ratio while scaling or resizing a window.
- Clone an input source to multiple windows
- Label visible windows
- Advanced window cropping-either by graphically resizing the viewport through the UI or by entering precise cropping coordinates to achieve maximum pixel accuracy
- Intuitive Z-Order management
- Support picture-in-picture configurations
- Text overlay function with control over text font, color, size, location, blink and scroll speed
- Window transparency and colour keying functions

### Source Control Features

- Renaming, cropping, rotation (90°, 180°, and 270°), and text overlay functionality
- Source-specific hue, saturation, brightness, and contrast color correction parameters
- Multiple deinterlacing filters-including single field, bob, weave, and adaptive techniques
- Source touring for automated source switching within one or more windows in a layout NEW

### Layout Control Features

- Create, save, rename, copy, and delete layouts
- Switch from layout to layout with a single click
- Lock a layout to prevent accidental changes
- Import or export a layout
- Control background color as well as window border color and width
- Create a scrolling text across the entire video wall with the marquee function
- Create a layout offline and then push it live, or edit layouts online in real time
- Add and control external applications such as VLC®, VNC®, Internet Explorer®, PowerPoint® Viewer, and Image Viewer on the video wall
- Create layout schedules to automatically switch from one layout to another



### Additional Features

- FPGA architecture providing excellent image processing performance,
- Input Signal Preview: input signals can be previewed in the UI of software before being displayed on the screens,
- Card to Main-board Plugging structure,
- Multi Video Wall Control (MVWC) (up to 4 different video walls)
- Graphic Cropping and Signal Upscaling,
- Ultra-high Resolution background Image,
- Character Superimposition,
- Scene Saving: Any configuring arrangement of video signal displayed on screen wall can be saved as "scenes",
- HDCP-Compliant,
- Redundant Power Supply.

AVX-ControlPro for Windows is compatible with Windows 8/7/XP, Windows Vista and Windows Server® 2008 R2.



## KEY FEATURES

- Modular input and output chassis design 720x480 to 4096x2160 with a local DVI loop out for monitoring;
- Supports CVBS, YPbPr, VGA, DVI, HDMI, SDI, DisplayPort, UTP and optical fiber;
- Full screen modes Zoom, image crop and adjustable size & position through software;
- Functions perfectly as a multiviewer, video screen splitter, video converter and matrix switcher;
- Single screen grid formatting 2x2, 3x3, 4x4;
- Minimum single screen to 64 screens horizontally / 32 screens vertically 600x800, 768x1024, 768x1024, 720x1280, 800x1280, 1024x1280, 768x1366, 768x1360, 1050x1400, 900x1440, 1200x1600, 1050x1680, 1080x1920, 1200x1920
- Image parameters and layouts are automatically saved in Preset mode of the device creating easy buttons;
- Background Image storage;
- Management of Multiple Videowalls;
- EDID Management;
- Input Signal preview through Control Software
- Software control through TCP/IP
- 2/4/8/13/19U size

The Avenview AVXWALL is a modular chassis based 4K video wall Processor with first in its class field-programmable gate array (FPGA) and industry recognized video processors built into the design.

The AVXWALL can Accept 4K signal formats with modular input and output board design with video connectors such as Dual Link DVI, DisplayPort and HDMI which offers impeccable quality across multiple screens.

Input/output cards are available in CVBS, YPbPr, VGA, DVI, HDMI, SDI, DisplayPort, HDBASET and optical fiber. These I/O cards offer extremely high video bandwidth, which ensures real-time signal processing, with no delay or frame loss.

Features as drag and drop, image placement, zoom, and user preset buttons to recall favorites as well as the ability to preview the input source directly within the Control Software which is connected through TCP/IP makes the use of this video wall enjoyable especially if using your touch devices with our optional automation linux based controller.

## 128 Inputs / 72 Outputs 19U Video Wall Controller



The HDM-AVXWALL is an ideal compact solution capable of driving up to 72 displays. With maximizing performance and lower power consumption, the HDM-AVXWALL is the powerful, flexible and affordable multi-display system for configuring display walls and digital signage with a resolution up to 4K (3840 x 2160).

ITEM	SPECIFICATION
Form Factor	2/4/8/13/19U Size
Input/Output	Supports up to 128 Inputs / 72 Outputs HDBaseT, HDMI, DVI, SDI, DP
Input	HDBaseT, YPbPr, CVBS
Output	HDMI, DVI
System Architecture	(FPGA) Field-programmable gate array
Startup Time	5 Seconds
System Control	TCP/IP
Audio Support	Yes (on selected I/O cards)
Supported Resolution	UHD 4K, Full HD 1080P, SD / Max Input Resolution 8000X2400 WQUXGA
Relative Humidity	20~90% RH [no condensation]
Operating Temperature	0~40°C [32~104°F]
Local Output	DVI
Dimensions (L x W x H)	Based on form factor
Power Supply	AC 100-240V / 150 Watts (max)

### USA Head Office

Office Avenview  
Corp. 275 Woodward Avenue  
Kenmore, NY 14217  
Phone: +1.716.218.4100 ext223  
Fax: +1.866.387-8764  
Email: info@avenview.com

### Canada Sales

Avenview  
151 Esna Park Drive, Unit 11 & 12  
Markham, Ontario, L3R 3B1  
Phone: 1.905.907.0525  
Fax: 1.866.387.8764  
Email: info@avenview.com

### Avenview Europe

Avenview Europe  
Demkaweg 11  
3555 HW Utrecht  
Netherlands  
Phone: +31 (0)85 2100-613  
Email: info@avenview.eu

### Avenview Hong Kong

Unit 8, 6/F, Kwai Cheong Centre,  
50 Kwai Cheong Road,  
Kwai Chung, N.T.  
Hong Kong  
Phone: 852-3575 9585  
Email: wenxi@avenview.com