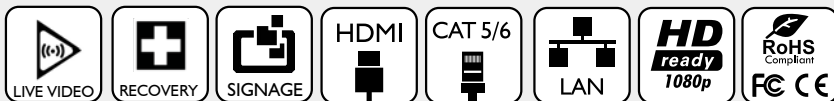




Control Your Video

VIDEO WALLS VIDEO PROCESSORS
VIDEO MATRIX SWITCHES
EXTENDERS SPLITTERS WIRELESS
CABLES & ACCESSORIES

HDMI/VGA 1080p Digital Signage Player with Live Video Input



Model #: MP-1080HDMVL

© 2016 Avenview Inc. All rights reserved.

The contents of this document are provided in connection with Avenview Inc. ("Avenview") products. Avenview makes no representations or warranties with respect to the accuracy or completeness of the contents of this publication and reserves the right to make changes to specifications and product descriptions at any time without notice. No license, whether express, implied, or otherwise, to any intellectual property rights is granted by this publication. Except as set forth in Avenview Standard Terms and Conditions of Sale, Avenview assumes no liability whatsoever, and disclaims any express or implied warranty, relating to its products of Avenview Inc. is strictly prohibited.

Product Application & Market Sectors



Corporate



House Of Worship



Military



Residential



Education



Industrial



Medical



Aviation



TABLE OF CONTENTS

1.	GETTING STARTED	1
1.1	IMPORTANT SAFEGUARDS.....	1
1.2	SAFETY INSTRUCTIONS	1
1.3	REGULATORY NOTICES FEDERAL COMMUNICATIONS COMMISSION (FCC)	2
2.	INTRODUCTION AND FEATURES.....	3
2.1	PACKAGE CONTENTS	4
2.2	BEFORE INSTALLATION	4
2.3	APPLICATION DIAGRAM.....	5
2.4	PANEL DESCRIPTION.....	6
2.4.1	RIGHTSIDE PANEL.....	6
2.4.2	LEFT SIDE PANEL	6
2.4.3	FRONT PANEL	7
2.4.4	REAR PANEL	7
3.	INSTALLATION GUIDE.....	8
4.	GENERAL TROUBLESHOOTING.....	8
5.	MP-1080HDMVL STARTUP.....	9
6.	SOFTWARE (AV SignPRO).....	10
6.1	Software Download	10
6.2	Create Playlist	10
6.3	Select Player.....	11
6.4	Select a Template.....	11
6.5	Edit Template.....	12
6.6	Uploading Content	12
6.7	Widget Selection.....	13
6.8	Set a Schedule	13
6.9	Save/Load Playlist to PC.....	14
6.10	Save/Export Playlist to Player/USB.....	14
6.11	Send to Player.....	15
6.12	Delete/Reset Contents.....	15
6.13	Password Protection.....	16
7.	PARTENERED SOFTWARE	17
8.	SPECIFICATIONS	18
9.	PIN & WIRING STANDARD DEFINITION.....	19



SECTION I: GETTING STARTED

I.1 IMPORTANT SAFEGUARDS

Please read all of these instructions carefully before you use the device. Save this manual for future reference.

What the warranty does not cover

- Any product, on which the serial number has been defaced, modified or removed.
- Damage, deterioration or malfunction resulting from:
 - Accident, misuse, neglect, fire, water, lightning, or other acts of nature, unauthorized product modification, or failure to follow instructions supplied with the product.
 - Repair or attempted repair by anyone not authorized by us.
 - Any damage of the product due to shipment.
 - Removal or installation of the product.
 - Causes external to the product, such as electric power fluctuation or failure.
 - Use of supplies or parts not meeting our specifications.
 - Normal wear and tear.
 - Any other causes which does not relate to a product defect.
- Removal, installation, and set-up service charges.

I.2 SAFETY INSTRUCTIONS

The Avenview MP-1080HDMVL Digital Signage Player has been tested for conformity to safety regulations and requirements, and has been certified for international use. However, like all electronic equipment's, the MP-1080HDMVL should be used with care. Read the following safety instructions to protect yourself from possible injury and to minimize the risk of damage to the unit.




- ⚠ Do not dismantle the housing or modify the module.
- ⚠ Dismantling the housing or modifying the module may result in electrical shock or burn.
- ⚠ Refer all servicing to qualified service personnel.
- ⚠ Do not attempt to service this product yourself as opening or removing housing may expose you to dangerous voltage or other hazards
- ⚠ Keep the module away from liquids.
- ⚠ Spillage into the housing may result in fire, electrical shock, or equipment damage. If an object or liquid falls or spills on to the housing, unplug the module immediately.
- ⚠ Have the module checked by a qualified service engineer before using it again.
- ⚠ Do not use liquid or aerosol cleaners to clean this unit. Always unplug the power to the device before cleaning.



1.3 REGULATORY NOTICES FEDERAL COMMUNICATIONS COMMISSION (FCC)

This equipment has been tested and found to comply with Part 15 of the FCC rules. These limits are designed to provide reasonable protection against harmful interference in a residential installation.

Any changes or modifications made to this equipment may void the user's authority to operate this equipment.

Warning symbols	Description
	<p>ONLY USE THE PROVIDED POWER CABLE OR POWER ADAPTER SUPPLIED. DO NOT TAMPER WITH THE ELECTRICAL PARTS. THIS MAY RESULT IN ELECTRICAL SHOCK OR BURN.</p>
	<p>DO NOT TAMPER WITH THE UNIT. DOING SO WILL VOID THE WARRANTY AND CONTINUED USE OF THE PRODUCT.</p>
	<p>THE VIDEO BOARDS ARE VERY SENSITIVE TO STATIC. PLEASE ENSURE IF RACK MOUNTED OR INSTALLED ON A SURFACE, IT SHOULD BE IN A GROUNDED ENVIROMENT.</p>

	<p>⚠ WARNING</p> <p>Read & understand user guide before using this device.</p> <p>Failure to follow the proper installation instructions could result in damage to the product and preventing expected results.</p>
---	--



2. INTRODUCTION

Printed signs are something from the past. Avenview HDMI Digital Signage Player delivers hardware HD video playback for smooth 1080p video with live video input from any HDMI source as cable box or bluray player with an advanced onboard processing power for stunning HTML5 content playback. MP-1080HDMVL is a plug and play device with no setup required, Plug in power, network and HDMI, and its ready to play contents on any display. The MP-1080HDMVL is fanless, with its specially designed casing and smart ventilation architecture it stays cool 24/7. Avenview digital signage player features a built-in self-recovery function (SRF) that keeps things running regardless of conditions (sudden reboots or power outage). It includes a micro-SD slot expandable up to 32GB for longer presentations.

The MP-1080HDMVL has a unique features which does not lock user to a specific software to create contents, we partnered with the most prominent digital signage content management software developers such as Scala, SignageLive, PosterDigital and much more which are all fully compatible with the MP-1080HDMVL. So, users are free to use any software they prefer with the MP-1080HDMVL.

The MP-1080HDMVL is great for any application from menu boards, hospitality screens, campus signage, and corporate communications. It handles any Full HD application with ease. It's great for retail applications as well, driving digital posters and other screens.

FEATURES:

- Live video input allows mixing created content with live channels or video players on one screen
- Always On with App Lock feature to prevent unauthorized access
- HTML5 technologies including CSS and Javascript
- Widgets for calendar, clock, news, weather, and web page integration with the ability to add custom created widgets
- Multi-zone screen layout, transparent PNG overlay, and graphical scrolling ticker
- Auto-play starts playing scheduled contents automatically when powered on
- Fanless (zero noise) with built-in 16 GB SSD storage
- Automatic error recovery with built-in WDT
- Real-time clock with backup clock battery
- AV SignPRO software to create media content with the ability to use third party solutions (optional license)
- Micro SD card slot (support up to 32GB storage)
- Strong Cache for continued playback even when network is not available
- Built-in wall mount bracket
- 3 years warranty



2.1 PACKAGE CONTENTS

Before starting the installation of MP-1080HDMVL, please check the package contents.

1	MP-1080HDM	X 1	
2	HDMI CORD (3 ft)	X 1	
3	WIFI ANTENNA	X 1	
4	VELCRO STRIP	X 1	
5	POWER ADAPTER (12V/1.5A DC)	X 1	
6	MOUNTING BRACKET	X 2	
7	USER'S MANUAL	X1	

2.2 BEFORE INSTALLATION

- Put the product in an even and stable location. If the product falls down or drops, it may cause an injury or malfunction.
- Don't place the product in too high temperature (over 50°C), too low temperature (under 0°C) or high humidity.
- Use the DC power adapter with correct specifications. If inappropriate power supply is used then it may cause a fire.



2.3 APPLICATION DIAGRAM

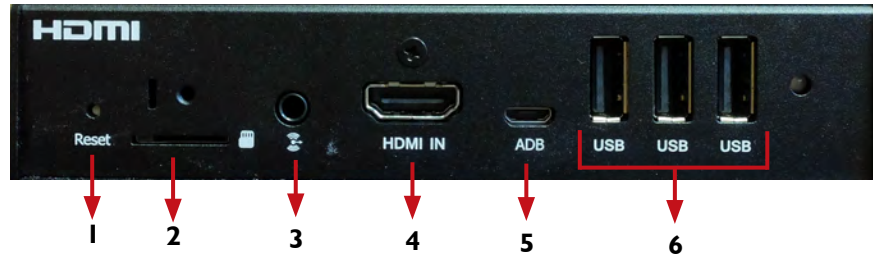
MP-1080HDMVL

HDMI/VGA Digital Signage Player with Live Video Input



2.4 PANEL DESCRIPTION

2.4.1 Right Side Panel



1. RESET: Reset device to factory default	2. MICRO SD CARD SLOT: Expand storage up to 32 GB
3. AUDIO OUT: 3.5mm Audio out to connect to Audio/Video Receiver or Soundbar	4. HDMI IN: Plug in an external source as a Bluray player or set-top box for live video display
5. ADB: Android Debug Bridge for device control over USB <i>(command-line utility included with Google's Android SDK)</i>	6. USB PORTS: Used to Connect a mouse or a keyboard for menu control or to transfer media content created using PC software on a flash drive

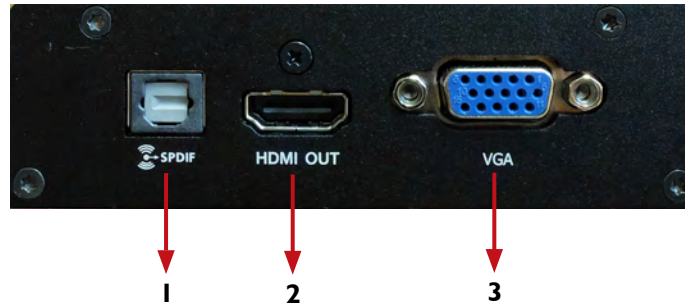
2.4.2 Left Side Panel



7. SMB JACK: Attach WiFi antenna to expand wifi signal coverage	8. LOCK PORT: Kensington lock for protection against theft
--	---

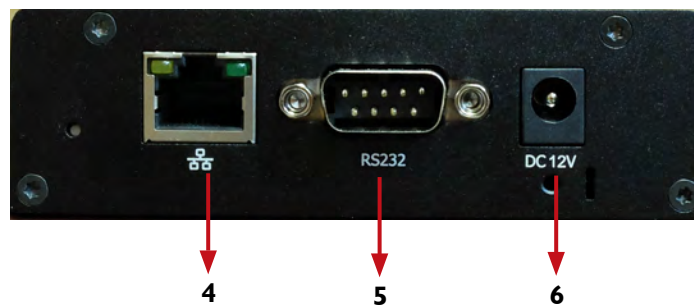


2.4.3 Front Panel



- | | |
|--|--|
| 1. OPTICAL OUT: SC Fiber Optic Audio out to connect to Audio/Video Receiver or Soundbar | 2. HDMI OUT: Connect to a TV or Display using an HDMI cable |
| 3. VGA OUT: Connect to a second monitor or display using a VGA cable (<i>VGA supports content created with no live video input</i>) | |

2.4.4 Rear Panel



- | | |
|---|---|
| 4. LAN: Connect to local network for media transfer or internet access | 5. RS 232: Used for control commands and PC access |
| 6. POWER JACK: Plug in the provided 12V power adapter | |



3. INSTALLATION GUIDE

To setup Avenview MP-1080HDMVL follow below steps:

1. Power OFF all devices
2. Connect an HDMI display or TV to the MP-1080HDMVL HDMI OUT port using HDMI cable
3. Connect an HDMI source to the MP-1080HDMVL HDMI IN port using HDMI cable for live video feed
4. Connect a CAT-5e/6 to the MP-1080HDMVL to connect to local network
5. Plug in 5V DC power cord to the power jack of the MP-1080HDMVL
6. Power on all devices
7. Download AV SignPRO Software and start uploading media contents

4. GENERAL TROUBLESHOOTING

PROBLEM	POSSIBLE SOLUTION
NO IMAGE	<ul style="list-style-type: none">• Check if connection to the source and the display are correct.• Ensure that display device supports 480p, 720p and 1080p resolution
SCREEN DEFECTS APPEAR	<ul style="list-style-type: none">• Make sure a premium quality HDMI cord is used and no adapters/converters connected
NO PLAYER FOUND	<ul style="list-style-type: none">• Check if player is connected to the network• Ensure that player is on the same network as the PC Software• Reboot the player• Close and restart the AV SignPRO software
SLOW OR NO MEDIA EXPORTING	<ul style="list-style-type: none">• Ensure player is connected over Cat5/6 cable not Wifi
PLAYER SHOWING BLACK IMAGE	<ul style="list-style-type: none">• Check playlist schedule
NO LIVE VIDEO	<ul style="list-style-type: none">• Make sure VGA cord is not connected if HDCP source. (Live Video input is supported on both HDMI & VGA if non-HDCP source.)• Make sure to set live input device to 720p if HDCP source.

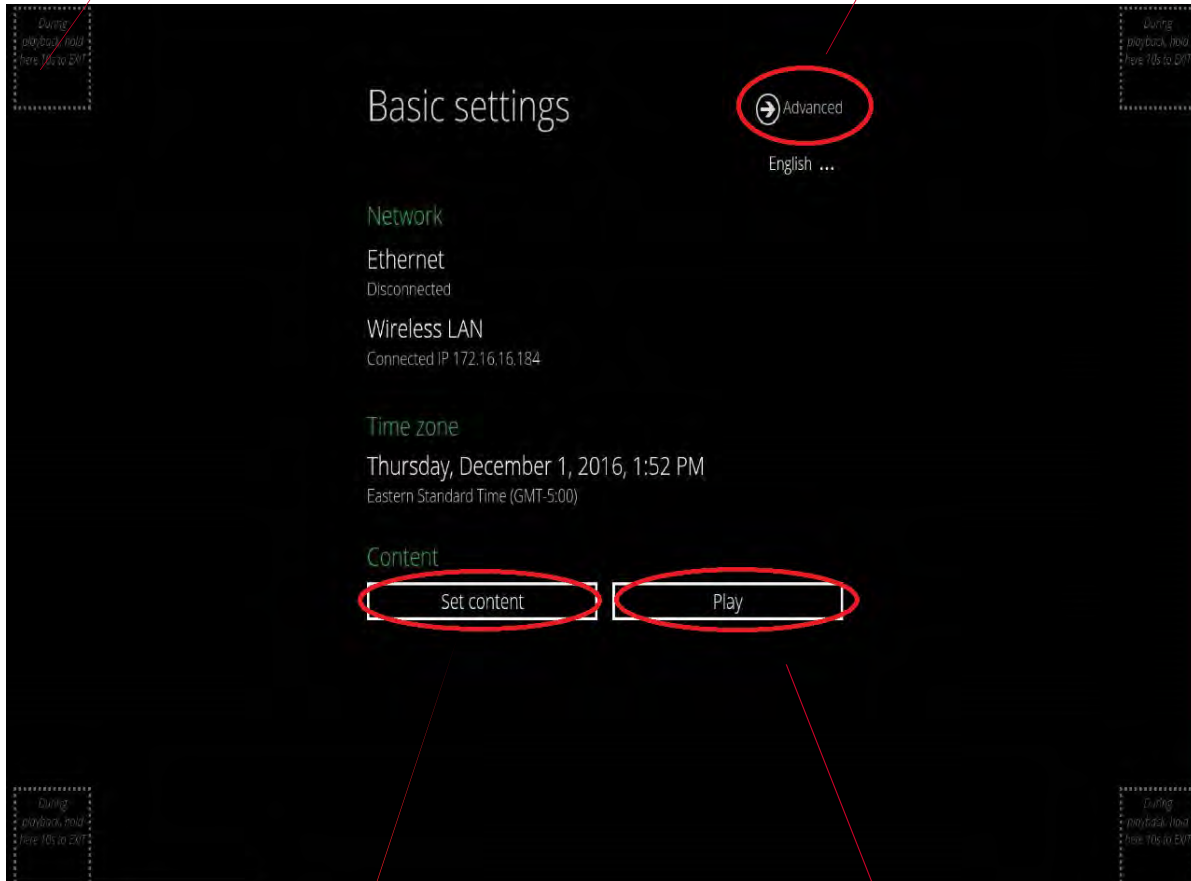


5. MP-1080HDM STARTUP

When MP-1080HDMVL is powered on it will log into the 'Basic Settings' screen allowing 15 seconds before it starts autoplaying the last uploaded playlist.

Left click and hold for 10 sec. at any four corners of the screen at anytime while content is playing to stop playlist and access basic Settings screen

Click 'Advanced' to access MP-1080HDMVL advanced settings



Type in a website address with HTML5 support for instant web playing

Click 'Play' to start playlist or Click 'Cancel Autorun' to stop autoplay



6. SOFTWARE

6.1 Software Download

Download and install **AV SignPro** software from below:

http://www.avenview.com/downloads/AVSignPRO_Setup-3.0.1.90.msi



Double click software icon to launch the application, AV SignPRO will start with the main screen to create a playlist.

6.2 Create a Playlist

Start by typing a playlist name then click on 'Create Playlist'



- List of active "online" players will be showing instantly on the right side panel of the software (*click refresh to update the list and search for new devices*)

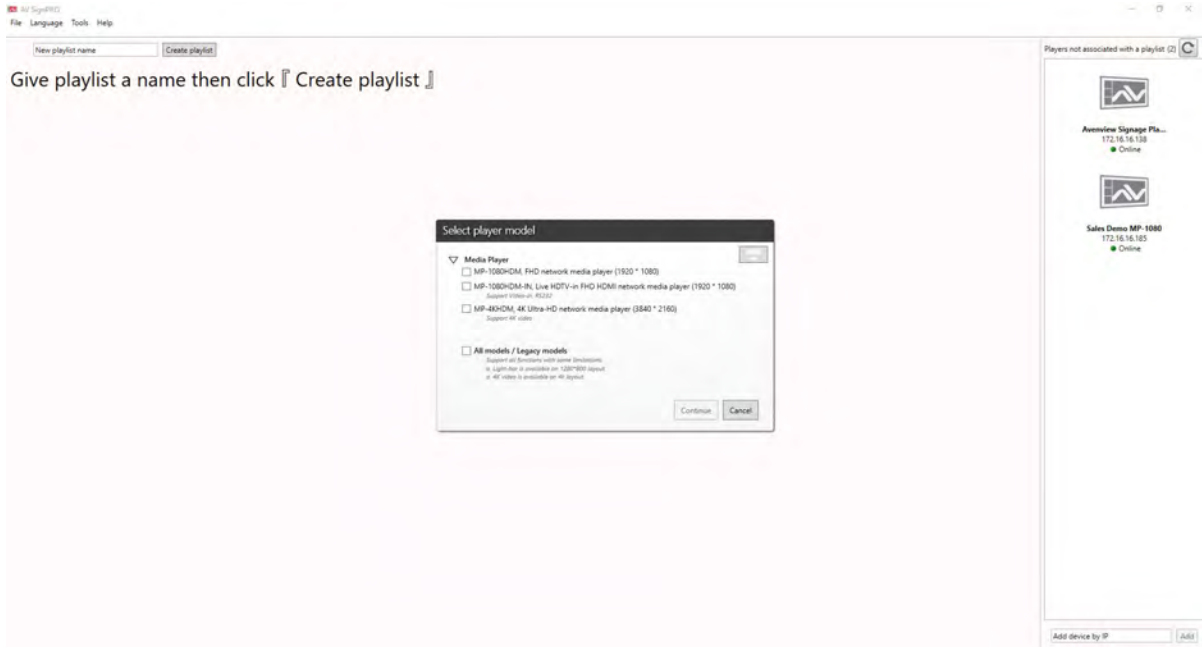


6.3 Select a Player

Click **'Create Playlist'** to create a new playlist to be uploaded to a player.

Select Player Model:

- Select the player model. If not sure of the player model **'All models / Legacy models'** can be selected for a universal format content.

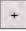



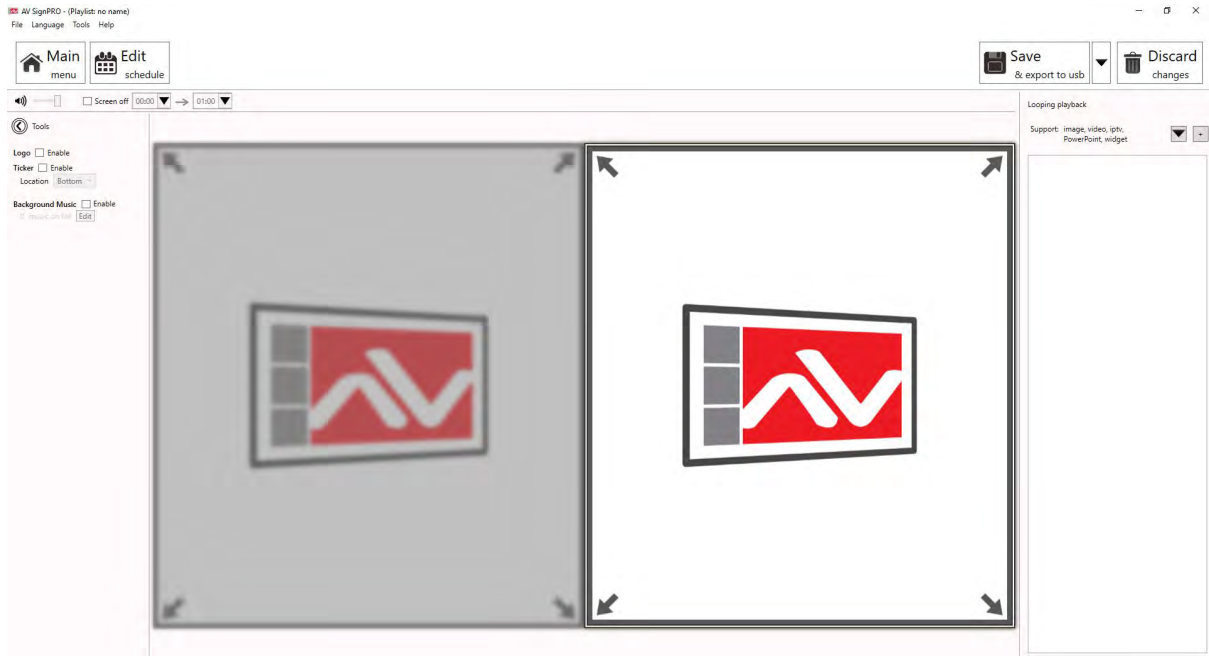
6.4 Select a Template

After selecting the player model a preset layouts/templates will be displayed to choose from. Select the desired template. Other properties can be selected from the left panel such as resolution required, orientation, etc..




6.5 Edit Template

Click on template empty zones. Media uploading panel will appear on the right side of software main screen. Contents can be uploaded by selecting  or .



6.6 Uploading Contents

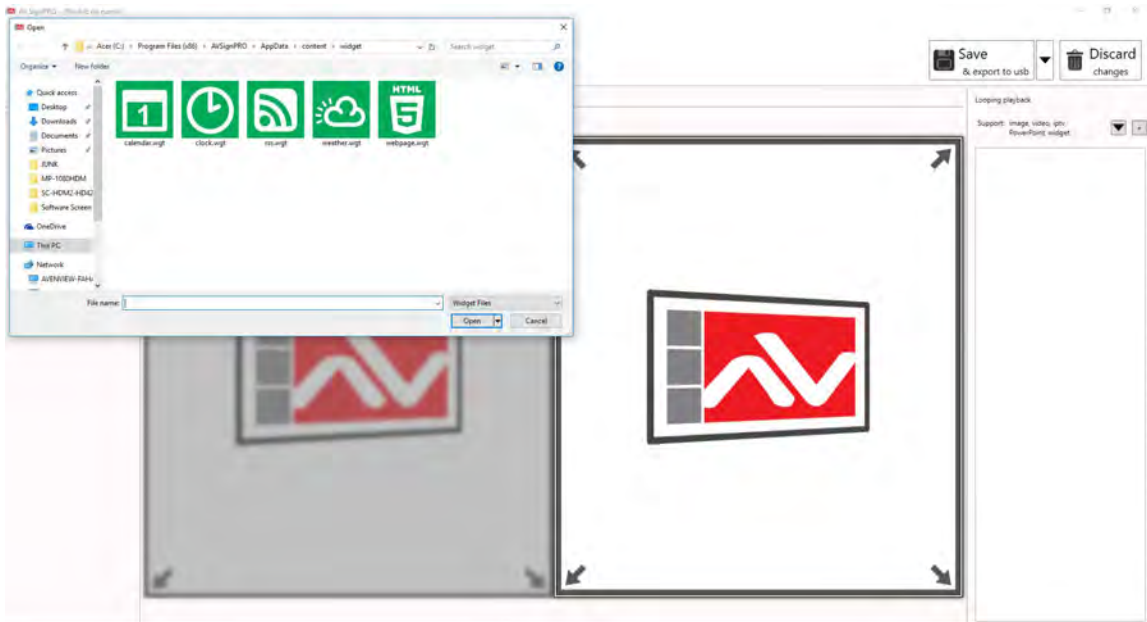
Click  to upload a video, image or a document.

Click  to upload a widget or link an IPTV (live cable box), Source should be connected to HDMI IN port on the MP-I080HDMVL.



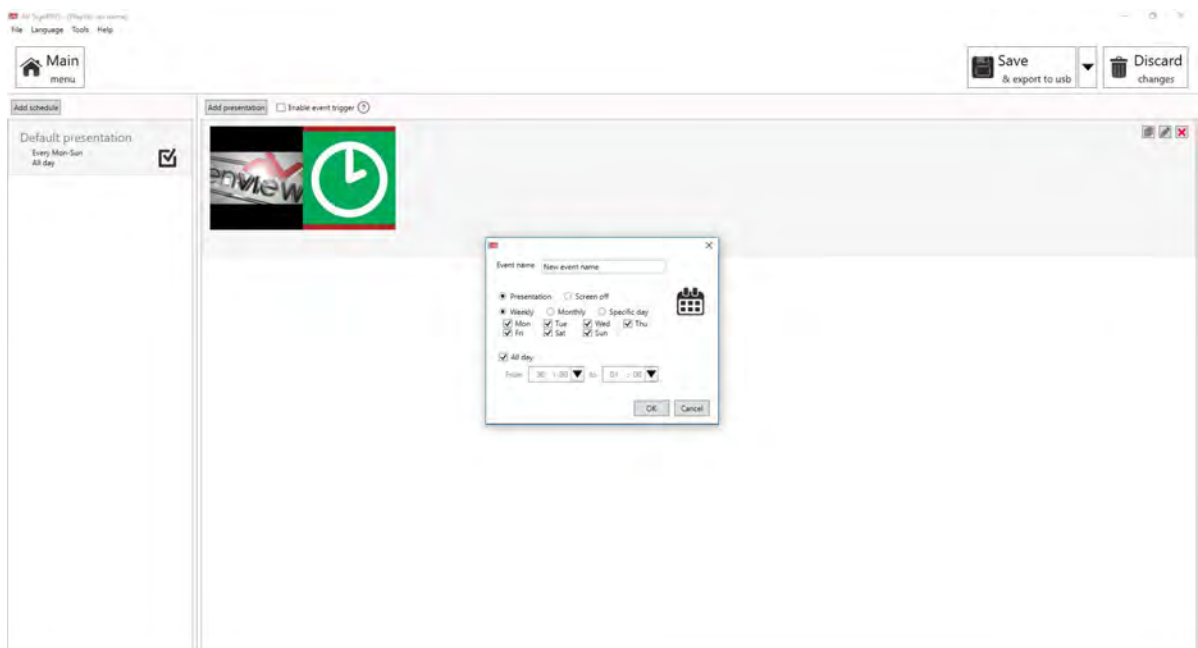
6.7 Widget Selection

Five preloaded widgets can be uploaded. More can be added by saving Widget files in Widget folder.



6.8 Set a Schedule

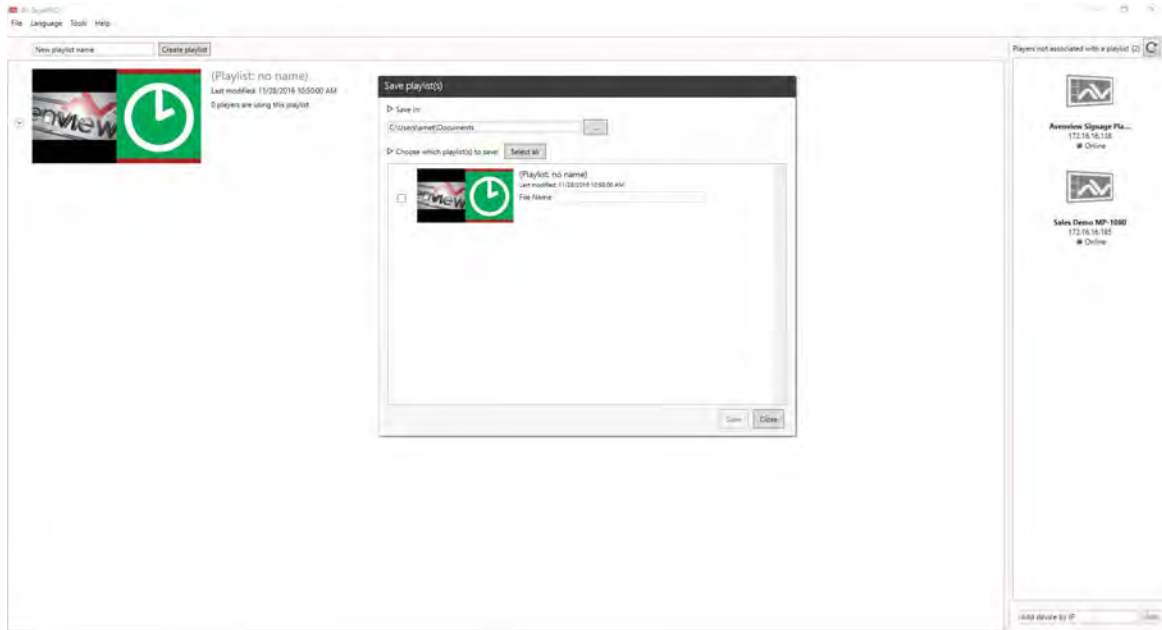
Click 'Edit Schedule' from top left menu to set a schedule for all created playlist




6.9 Save/Load Playlists to PC

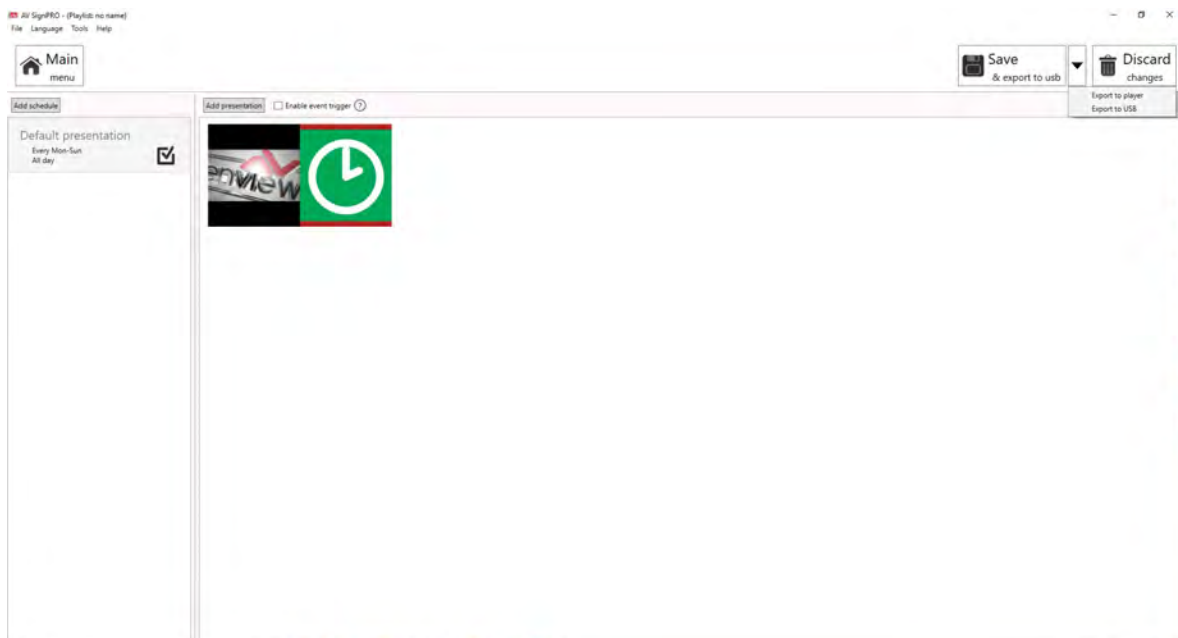
Click **'File'** then select **'Save'** to save the created playlist to a destination.

Click **'File'** then select **'Load'** to load a saved playlist.




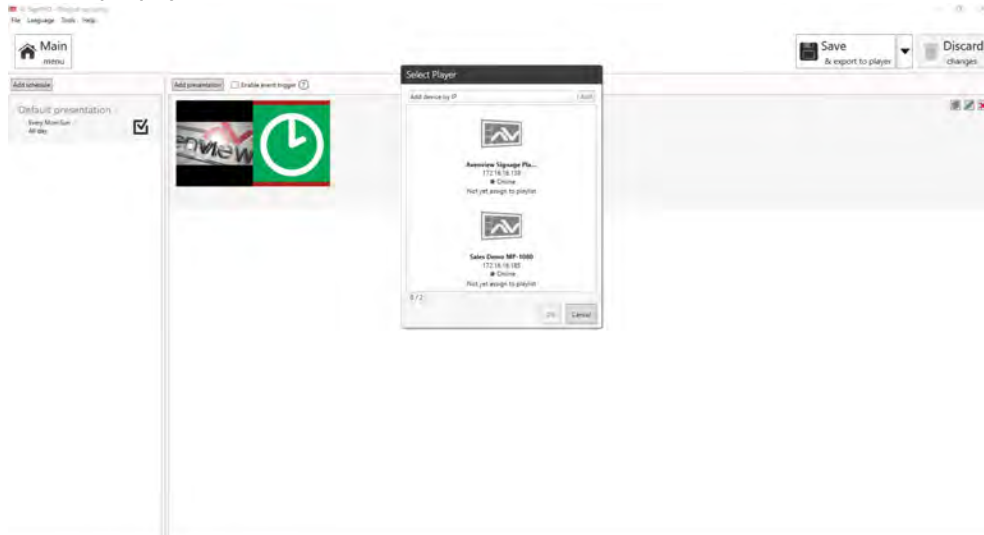
6.10 Save/Export Playlist to Player/USB

Click  from top right menu to either export created media content to a player or transfer content to a USB flash drive



6.11 Send to Player

Click  from top right menu and select **'Export to Player'**. A list of online players will show up. Select a single player or multiple players to send content to.

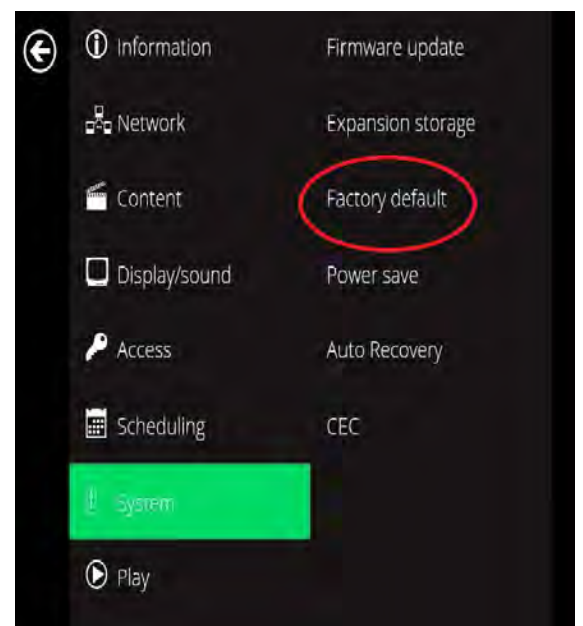
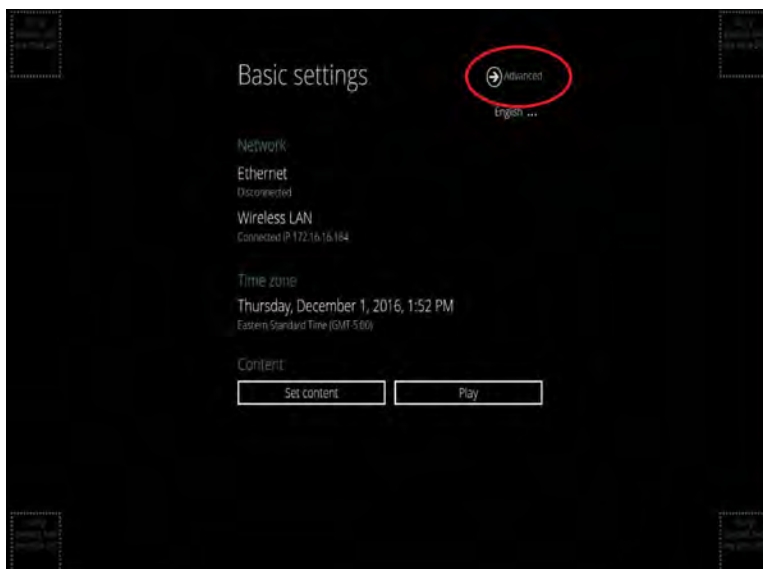


6.12 Delete/Reset Contents

- To delete player contents upload a new playlist or an empty template that will overwrite the existing playlist on the player.
- If no playlist to be uploaded to the player, factory reset the digital media player to delete all playlist previously created.

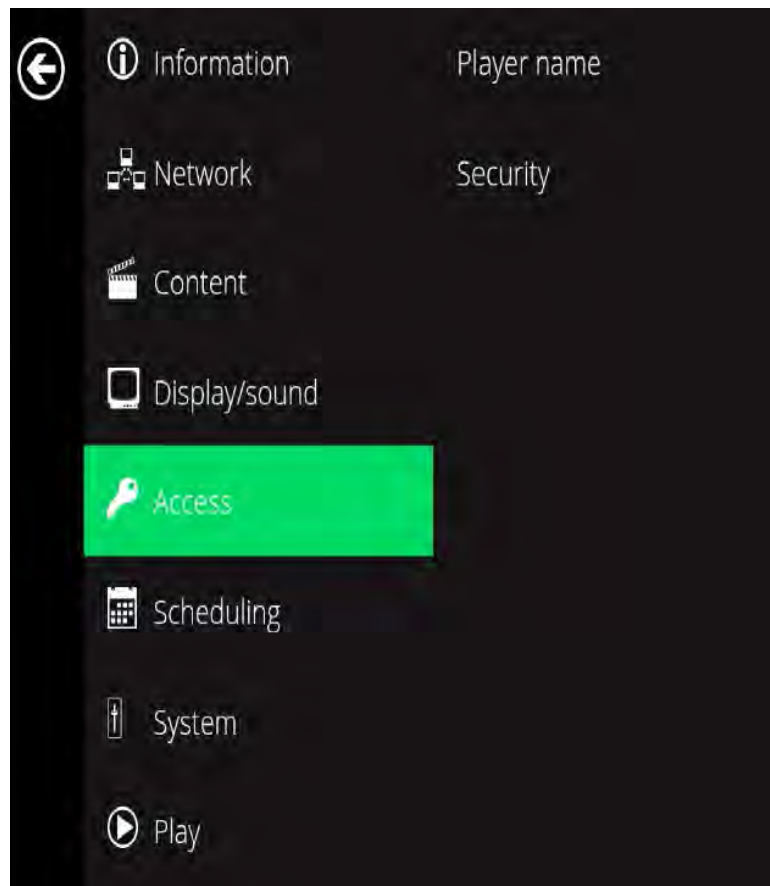
- From Player **'Basic Settings'** page click **'Advanced'** - **'System'** and Select **'Factory Default'**

Note: 'Factory default' will delete all playlists created and media saved and will restore MP-1080HDMVL to its factory default state



6.13 Password Protection

MP-1080HDMVL can be protected from any access or content changing using a password that can be set from '**Advanced menu**' and selecting '**Access**'.



7. PARTENERED SOFTWARE

Avenview MP-1080HDMVL users can use a selected number of third party **content management softwares** -from the list below- other than the free **AV SignPro Software** provided with their purchase of any Avenview Digital Signage Player for added convinience and flexibility in media creation.



8. SPECIFICATIONS

ITEM	DESCRIPTION
UNITS	MP-1080HDMVL
UNIT DESCRIPTION	1080p Digital Signage Player with Live Video Input
HDMI COMPLIANCE	1.4
PRIVACY AND SECURITY	Password Protected
VIDEO FORMAT SUPPORTED	H.265/HEVC up to 4K (3840x2160), H.264/AVC up to 1080p (1920x1080), MPEG-4 up to 1080p (1920x1080), MPEG-2 up to 1080p (1920x1080), MPEG-1 up to 1080p (1920x1080), VC-1 up to 1080p (1920x1080)
CONNECTIVITY	Gigabit Ethernet, Wireless: 802.11 b/g/n (2.4 GHz), HDMI 2.0 (3840x2160 @60fps), Micro USB for ADB, USB 2.0 x 2, 3.5mm analog stereo audio out, S/PDIF out, AniBeacon™ (BLE), Optional 3G/4G mobile module via USB
AUDIO SUPPORT	Supports LPCM 2/5.1/7.1CH, Dolby Digital 2/5.1CH, DTS 2/5.1CH (Bypass), DolbyTrueHD and DTS-HD Master Audio
CONTENT MANAGEMENT	AVSignPRO Software, 3rd party solution (optional license)
CONTROL	PC Software and OSD
INPUT	1x RJ45, 3x USB 2.0, 1x Micro SD Slot 1x HDMI, 1x VGA, 1x Micro USB <i>(factory)</i> 1x RS 232
OUTPUT	1x HDMI, 1x SPDIF (Optical), 1x 3.5mm Audio Out
HDMI CONNECTOR	Type A (19 pin female)
LOCAL STORAGE	16 GB eMMC built-in (approx. 360 minutes of typical 720p video @3 Mbps) expandable up to 32 GB with Micro SD Card
POWER ADAPTER	100-240V, 50-60 Hz, 0.5A Max. 12V/1.5A DC
POWER CONSUMPTION	3W Max
DIMENSION L x W x H	5.45" x 5.04" x 0.9"
WEIGHT	0.74 lbs

Environmental

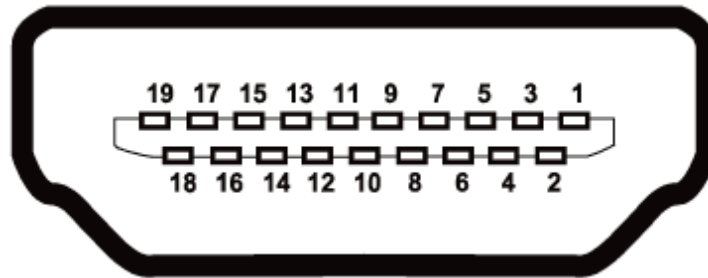
OPERATING TEMPERATURE	32° ~ 140°F (0° to 60°C)
STORAGE TEMPERATURE	-4° ~ 140°F (-20° ~ 60°C)
RELATIVE HUMIDITY	20~90% RH.(no condensation)

PERFORMANCE GUIDE FOR HDMI OVER CATEGORY CABLE TRANSMISSION

PERFORMANCE RATING		TYPE OF CATEGORY CABLE		
WIRING	SHIELDING	CAT5	CAT5E	CAT6
SOLID	UNSHIELDED (UTP)	★★★	★★★★★	★★★★★
	SHIELDED (STP)	★★★	★★★	★★★★★
STRANDED	UNSHIELDED (UTP)	★	★★	★★
	SHIELDED (STP)	★	★	★★
TERMINATION		PLEASE USE EIA/TIA-568-B TERMINATION (T568B) AT ANY TIME		



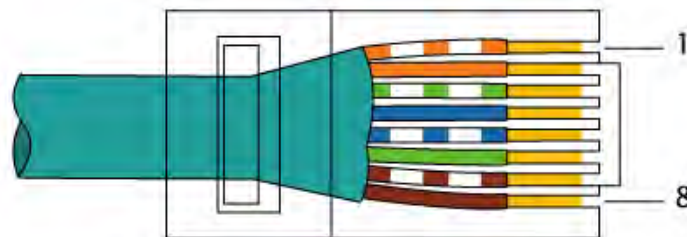
9. PIN & WIRING STANDARD DEFINITION



TYPE A (RECEPTACLE) HDMI

Pin 1	TMDS Data2+	Pin 11	TMDS Clock Shield
Pin 2	TMDS Data2 Shield	Pin 12	TMDS Clock-
Pin 3	TMDS Data2-	Pin 13	CEC
Pin 4	TMDS Data1 +	Pin 14	Reserved (N.C. on device)
Pin 5	TMDS Data1 Shield	Pin 15	SCL
Pin 6	TMDS Data1-	Pin 16	SDA
Pin 7	TMDS Data0+	Pin 17	DDC/CEC Ground
Pin 8	TMDS Data0 Shield	Pin 18	+5V Power
Pin 9	TMDS Data0-	Pin 19	Hot Plug Detect
Pin 10	TMDS Clock+		

CAT5E/6 WIRING STANDARD



EIA/TIA-568B



Avenview Warranty Certificate

AVENVIEW CORP. ("Avenview") warrants Avenview-branded product(s) contained in the original packaging against defects in materials and workmanship when used normally in accordance with Avenview's enclosed manual guidelines for a period of THREE (3) YEARS from the date of original retail purchase - Warranty Period. Avenview's published guidelines include but are not limited to information contained in technical specifications, user manuals and service communications.

LABOR: During the Warranty Period of THREE (3) YEARS, Avenview will repair or replace the product(s) at no cost using new or used parts equivalent to novel performance and reliability if the product(s) is determined to have abide by Avenview's published guidelines. Cost of Labor applicable to product(s) after Warranty Period. For labor costs, please contact support@avenview.com.

PARTS: During the Warranty Period of THREE (3) YEARS, Avenview will supply new or rebuilt replacements in exchange for defective parts of the product(s) at no cost if the product(s) is determined to have abide by Avenview's published guidelines. Cost of Parts applicable to product(s) after Warranty Period. For part(s) costs, please contact support@avenview.com.

To obtain Warranty: (a) proof of purchase in the form of a bill of sale or receipted invoice reflecting that the registered product(s) is within warranty period must be presented to obtain warranty service; (b) product(s) must be registered at time of purchase. Failure to do so will result in applicable parts and labor charges. Returning product(s) must be shipped in Avenview's original packaging or in packaging pertaining equal degree of protection to Avenview's. Both Avenview and purchaser are responsible for freight charges and brokerages when shipping the product(s) to the receiver.

NOT COVERED BY THIS WARRANTY

This warranty does not apply to any non-Avenview branded product(s); non-registered Avenview product(s). This warranty does not apply: (a) to cosmetic damage, including but not limited to scratches, dents and broken cords; (b) to damage caused by use with another product; (c) to damage caused by accident, abuse, misuse, liquid contact, fire, earthquake or other external cause; (d) to damage caused by operating the Avenview product(s) outside Avenview's manuals or guidelines; (e) to damage caused by service performed by anyone who is not a representative of Avenview or an Avenview authorized personnel; (f) to defects caused by normal wear and tear or otherwise due to the normal aging of the Avenview product(s), or (g) if any serial number has been removed or defaced from the Avenview product(s).

AVENVIEW IS NOT LIABLE FOR DIRECT, SPECIAL, INCIDENTAL OR CONSEQUENTIAL DAMAGES RESULTING FROM ANY BREACH OF WARRANTY OR CONDITION, OR UNDER ANY OTHER LEGAL THEORY, INCLUDING BUT NOT LIMITED TO LOSS OF USE; LOSS OF REVENUE; LOSS OF ACTUAL OR ANTICIPATED PROFITS (INCLUDING LOSS OF PROFITS ON CONTRACTS); LOSS OF THE USE OF MONEY; LOSS OF ANTICIPATED SAVINGS; LOSS OF BUSINESS; LOSS OF OPPORTUNITY; LOSS OF GOODWILL; LOSS OF REPUTATION; LOSS OF, DAMAGE TO, COMPROMISE OR CORRUPTION OF DATA; OR ANY INDIRECT OR CONSEQUENTIAL LOSS OR DAMAGE REPAIR OR REPLACEMENT AS PROVIDED UNDER THIS WARRANTY IS THE EXCLUSIVE REMEDY OF THE CONSUMER.

Some states do not allow the inclusion or limitation of incidental or consequential damages, or allow limitations on duration implements of the Warranty Period; therefore the above limitations or exclusions may not be applicable to you. This warranty gives you specific legal rights, and you may have other rights which vary from state to state.



1100 Military Road, Kenmore, NY 14217
1.866.508.0269





Control Your Video

TECHNICAL SUPPORT

CONTACT US



Phone: 1 (866) 508 0269



Email: support@avenview.com



USA Head Office

Office Avenview Corp.
1100 Military Road
Kenmore, NY 14217
Phone: +1.716.218.4100 ext223
Fax: +1.866.387-8764
Email: info@avenview.com

Canada Sales

Avenview
151 Esna Park Drive, Unit 11 & 12
Markham, Ontario, L3R 3B1
Phone: 1.905.907.0525
Fax: 1.866.387.8764
Email: info@avenview.com

Avenview Europe

Avenview Europe
Demkaweg 11
3555 HW Utrecht
Netherlands
Phone: +31 (0)85 2100- 613
Email: info@avenview.eu

Avenview Hong Kong

Unit 8, 6/F, Kwai Cheong Centre,
50 Kwai Cheong Road,
Kwai Chung, N.T.
Hong Kong
Phone: 852-3575 9585
Email: wenxi@avenview.com

Disclaimer

While every precaution has been taken in the preparation of this document, Avenview Inc. assumes no liability with respect to the operation or use of Avenview hardware, software or other products and documentation described herein, for any act or omission of Avenview concerning such products or this documentation, for any interruption of service, loss or interruption of business, loss of anticipatory profits, or for punitive, incidental or consequential damages in connection with the furnishing, performance, or use of the Avenview hardware, software, or other products and documentation provided herein.

Avenview Inc. reserves the right to make changes without further notice to a product or system described herein to improve reliability, function or design. With respect to Avenview products which this document relates, Avenview disclaims all express or implied warranties regarding such products, including but not limited to, the implied warranties of merchantability, fitness for a particular purpose, and non-infringement.