

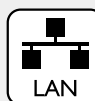


Control Your Video

**VIDEO WALLS VIDEO PROCESSORS**  
**VIDEO MATRIX SWITCHES**  
**EXTENDERS SPLITTERS WIRELESS**  
**CABLES & ACCESSORIES**

## PRODUCT MANUAL

### Model: MP-1080HDM



**Fanless HDMI 1080p Digital Signage Player**  
**w/ WiFi/USB/Optical Audio/CEC Support**

## Copyright

© 2017 Avenview Inc. All rights reserved.

The contents of this document are provided in connection with Avenview Inc. (“Avenview”) products. Avenview makes no representations or warranties with respect to the accuracy or completeness of the contents of this publication and reserves the right to make changes to specifications and product descriptions at any time without notice. No license, whether express, implied, or otherwise, to any intellectual property rights is granted by this publication. Except as set forth in Avenview Standard Terms and Conditions of Sale, Avenview assumes no liability whatsoever, and disclaims any express or implied warranty, relating to its products of Avenview Inc. is strictly prohibited.



# TABLE OF CONTENTS

1.	GETTING STARTED .....	1
1.1	IMPORTANT SAFEGUARDS.....	1
1.2	SAFETY INSTRUCTIONS .....	1
1.3	REGULATORY NOTICES FEDERAL COMMUNICATIONS COMMISSION (FCC) .....	2
2.	INTRODUCTION AND FEATURES.....	3
2.1	PACKAGE CONTENTS .....	4
2.2	BEFORE INSTALLATION .....	4
2.3	APPLICATION DIAGRAM.....	5
2.4	PANEL DESCRIPTION.....	6
2.4.1	RIGHTSIDE PANEL.....	6
2.4.2	LEFT SIDE PANEL .....	6
2.4.3	FRONT AND REAR PANEL .....	7
3.	INSTALLATION GUIDE.....	8
4.	GENERAL TROUBLESHOOTING.....	8
5.	MP-1080HDM STARTUP.....	9
6.	SOFTWARE (AV SignPRO).....	10
6.1	Software Download .....	10
6.2	Create Playlist .....	10
6.3	Select Player.....	11
6.4	Select a Template.....	11
6.5	Edit Template.....	12
6.6	Uploading Content .....	12
6.7	Widget Selection.....	13
6.8	Set a Schedule .....	13
6.9	Save/Load Playlist to PC.....	14
6.10	Save/Export Playlist to Player/USB.....	14
6.11	Send to Player.....	15
6.12	Delete/Reset Contents.....	15
6.13	Password Protection.....	16
7.	PARTENERED SOFTWARE .....	17
8.	SPECIFICATIONS .....	18
9.	PIN & WIRING STANDARD DEFINITION.....	19

## SECTION I: GETTING STARTED

### I.1 IMPORTANT SAFEGUARDS

**Please read all of these instructions carefully before you use the device. Save this manual for future reference. Avenview warranty certificate please refer to page #21**

**Warranty does not include:-**

- Any product on which the serial number has been defaced, modified or removed.
- Damage, deterioration or malfunction resulting from:
  - Accident, misuse, neglect, fire, water, lightning, or other acts of nature, unauthorized product modification, or failure to follow instructions supplied with the product.
  - Repair or attempted repair by anyone not authorized by us.
  - Any damage of the product due to shipment.
  - Removal or installation of the product.
  - Causes external to the product, such as electric power fluctuation or failure.
  - Use of supplies or parts not meeting our specifications.
  - Normal wear and tear.
  - Any other causes which does not relate to a product defect.
- Removal, installation, and set-up service charges.

### I.2 SAFETY GUIDELINES

The Avenview MP-1080HDM Digital Signage Player has been tested for conformance to safety regulations and requirements, and has been certified for international use. However, like all electronic equipments, the MP-1080HDM should be used with care. Read the following safety instructions to protect yourself from possible injury and to minimize the risk of damage to the unit.

- ⚠ Do not dismantle the housing or modify the module.
- ⚠ Dismantling the housing or modifying the module may result in electrical shock or burn.
- ⚠ Refer all servicing to qualified service personnel.
- ⚠ Do not attempt to service this product yourself as opening or removing housing may expose you to dangerous voltage or other hazards.
- ⚠ Keep the device away from liquids.
- ⚠ Spillage onto the housing may result in fire, electrical shock, or equipment damage. If an object or liquid falls or spills on to the housing, unplug the module immediately.
- ⚠ If the unit appears damaged, have the module checked by a qualified service engineer before using it again.
- ⚠ Do not use liquid or aerosol cleaners to clean this unit. Always unplug the power to the device before cleaning.









## 1.3 REGULATORY NOTICES FEDERAL COMMUNICATIONS COMMISSION (FCC)

Note: This equipment has been tested and found to comply with the limits for a Class A digital device, pursuant to part 15 of the FCC Rules. These limits are designed to provide reasonable protection against harmful interference when the equipment is operated in a commercial environment. This equipment generates, uses, and can radiate radio frequency energy and, if not installed and used in accordance with the instruction manual, may cause harmful interference to radio communications. Operation of this equipment in a residential area is likely to cause harmful interference in which case the user will be required to correct the interference at his own expense.

Properly shielded and grounded cables and connectors must be used in order to meet FCC emission limits. Avenview is not responsible for any radio or television interference caused by using other than recommended cables and connectors or by unauthorized changes or modifications to this equipment.

Warning symbols	Description
	ONLY USE THE PROVIDED POWER CABLE OR POWER ADAPTER SUPPLIED. DO NOT TAMPER WITH THE ELECTRICAL PARTS. THIS MAY RESULT IN ELECTRICAL SHOCK OR BURN.
	THIS WARNING SYMBOL MEANS DANGER. WHEN THIS SYMBOL IS PLACED, YOU ARE IN AN ENVIROMENT THAT CAN CAUSE BODILY INJURY.
	DO NOT TAMPER WITH THE UNIT. DOING SO WILL VOID THE WARRANTY AND CONTINUED USE OF THE PRODUCT.
	THE VIDEO BOARDS ARE VERY SENSITIVE TO STATIC. PLEASE ENSURE IF RACK MOUNTED OR INSTALLED ON A SURFACE, IT SHOULD BE IN A GROUNDED ENVIROMENT.
	<b>WARNING</b> Read & understand user guide before using this device. Failure to follow the proper installation instructions could result in damage to the product and preventing expected results.



## 2. INTRODUCTION

The Avenview HDMI Digital Signage Player delivers your video and audio content in crystal-clear 1080p resolution to any HDMI-enabled display. Designed with an advanced onboard processor for stunning HTML5 content playback. The MP-1080HDM is a plug and play device with no setup required: Plug in power, network and HDMI, and its ready to play content on any display. The MP-1080HDM is fanless and has no moving parts. With its specially designed casing and smart ventilation architecture, it stays cool 24/7. Avenview digital signage player features a built-in self-recovery function (SRF) that keep video playing regardless of conditions (sudden reboots or temporary power outage). It includes a micro-SD slot expandable up to 32GB for longer presentations.

The MP-1080HDM Android platform does not limit users to a specific content management software (CMS) to create content to be displayed. We partnered with the most prominent digital signage developers such as SignageLive, Sharing Cloud, Onsign TV and many more that are all fully compatible with the MP-1080HDM. There are no limits with what can be accomplished using our hardware such as Way Finding, Room Bookings, Airport Signage, Rest API integration, Web Triggers and hundreds of available widgets.

The HDM-1080HDM is great for any application from menu boards, hospitality screens, campus signage, and corporate communications. It handles any Full HD application with ease. It's great for retail applications as well, driving digital posters and other screens.

A 4K capable model (MP-4KHDM) is also available for any 4K content display with Videowall Sync feature.

### FEATURES:

- Always On with App Lock feature to prevent unauthorized access
- Supports HTML5 including CSS and Javascript
- Widgets for calendar, clock, news, weather, stock and web page integration with the ability to add custom created widgets
- Multi-zone screen layout, transparent PNG overlay, and graphical scrolling ticker
- Auto-play starts playing scheduled contents automatically when powered on
- Fanless (zero noise) with built-in 8 GB SSD storage
- Automatic error recovery with built-in watchdog timer
- Real-time clock with battery backup
- AVSignpro CMS to create media content with the ability to use third party solutions (optional license)
- Web Trigger integration
- REST API Integration
- Support content rotation with Landscape and portrait orientation
- Touch Enabled - Perfect for way finding
- Micro SD card slot (supports up to 32GB storage)
- Large Cache for continued playback even when network is not available
- Built-in wall mount bracket
- Very low power usage compared to PC-based solutions
- 3 year warranty



## 2.1 PACKAGE CONTENTS

Before starting the installation of MP-1080HDM, please check the package contents.

1	MP-1080HDM	X 1	
2	HDMI CORD (3 ft)	X 1	
3	WIFI ANTENNA	X 1	
4	VELCRO STRIP	X 1	
5	POWER ADAPTER (12V/1.5A DC)	X 1	
6	MOUNTING BRACKET	X 2	
7	USER'S MANUAL	X1	

## 2.2 BEFORE INSTALLATION

### ATTENTION

- Put the product in an even and stable location. If the product falls down or drops, it may cause an injury or malfunction.
- Don't place the product in too high temperature (over 50°C), too low temperature (under 0°C) or high humidity.
- Use the DC power adapter with correct specifications. If inappropriate power supply is used then it may cause a fire.
- Do not twist or pull by force ends of the UTP /HDMI cable. It can cause malfunction.
- To prevent airflow restriction, allow clearance around the ventilation openings to be at least: ONE Inch (25.4 mm).
- Keep the device away from water. If the unit becomes wet, power off immediately.



## 2.3 APPLICATION DIAGRAM

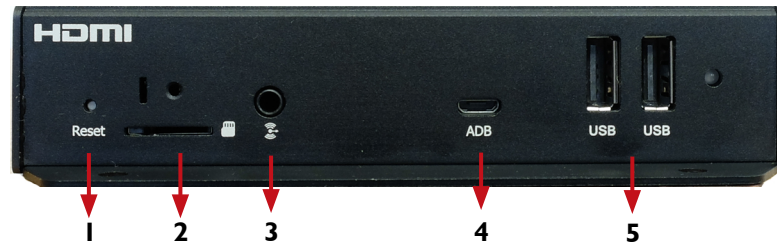


### FEATURED WIDGETS



## 2.4 PANEL DESCRIPTION

### 2.4.1 Right Side Panel



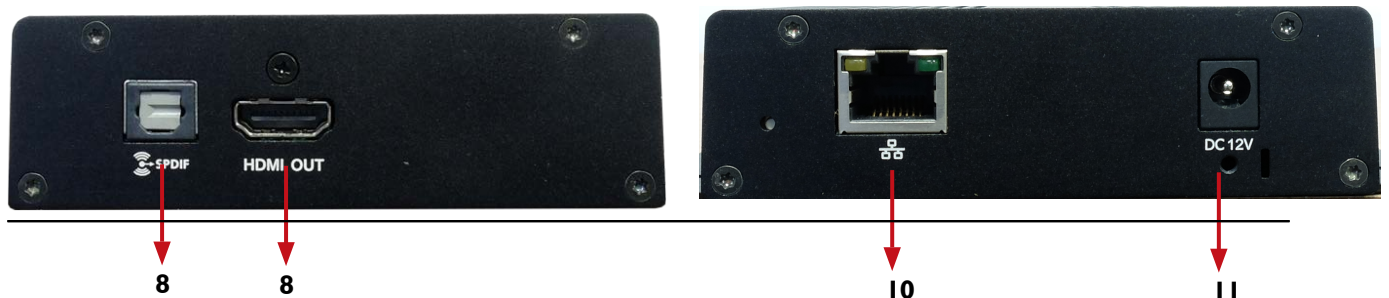
1. <b>RESET:</b> Reset device to factory default	2. <b>MICRO SD CARD SLOT:</b> Expand storage up to 32 GB
3. <b>AUDIO OUT:</b> 3.5mm Audio out to connect to Audio/Video Receiver or Soundbar	4. <b>ADB:</b> Android Debug Bridge for device control over USB (command-line utility included with Google's Android SDK)
5. <b>USB PORTS:</b> Connect a mouse or keyboard for menu control or transfer media content from a flash drive.	

### 2.4.2 Left Side Panel



6. <b>SMB JACK:</b> Attach WiFi antenna to expand wifi signal coverage	7. <b>LOCK PORT:</b> Kensington lock for protection against theft
--	---

### 2.4.3 Front and Rear Panel



8. <b>OPTICAL OUT:</b> Toslink Fiber Optic Audio connect to Audio/Video Receiver or Soundbar	9. <b>HDMI OUT:</b> Connect to a TV or Display using an HDMI cable
10. <b>LAN:</b> Connect to local network for media transfer via CMS or for cloud management	11. <b>POWER JACK:</b> Plug in the provided 12V power adapter



### 3. INSTALLATION GUIDE

To setup the Avenview MP-1080HDM digital signage player follow the below steps:

1. Power OFF all devices.
2. Connect an HDMI display or TV to the MP-1080HDM using HDMI cable
3. Connect a CAT-5e/6 to the MP-1080HDM to connect to local network
4. Plug in 5V DC power cord to the power jack of the receiving unit MP-1080HDM.
5. Power on all devices.
6. Set content via URL/http web address.(see page 9)
7. Download AV SignPRO Software and start uploading media contents via LAN or USB.

### 4. GENERAL TROUBLESHOOTING

PROBLEM	POSSIBLE SOLUTION
<b>NO IMAGE</b>	<ul style="list-style-type: none"><li>• Check if connection to the source and the display are correct.</li><li>• Ensure that display device supports 480p, 720p and 1080p resolution</li></ul>
<b>SCREEN DEFECTS APPEAR</b>	<ul style="list-style-type: none"><li>• Make sure a premium quality HDMI cord is used and no adapters/converters connected</li></ul>
<b>NO PLAYER FOUND</b>	<ul style="list-style-type: none"><li>• Check if player is connected to the network</li><li>• Ensure that player is on the same network as the PC Software</li><li>• Reboot the player</li><li>• Close and restart the AV SignPRO software</li></ul>
<b>SLOW OR NO MEDIA EXPORTING</b>	<ul style="list-style-type: none"><li>• Ensure player is connected over Cat5/6 cable not Wifi</li></ul>
<b>PLAYER SHOWING BLACK IMAGE</b>	<ul style="list-style-type: none"><li>• Check playlist schedule</li></ul>

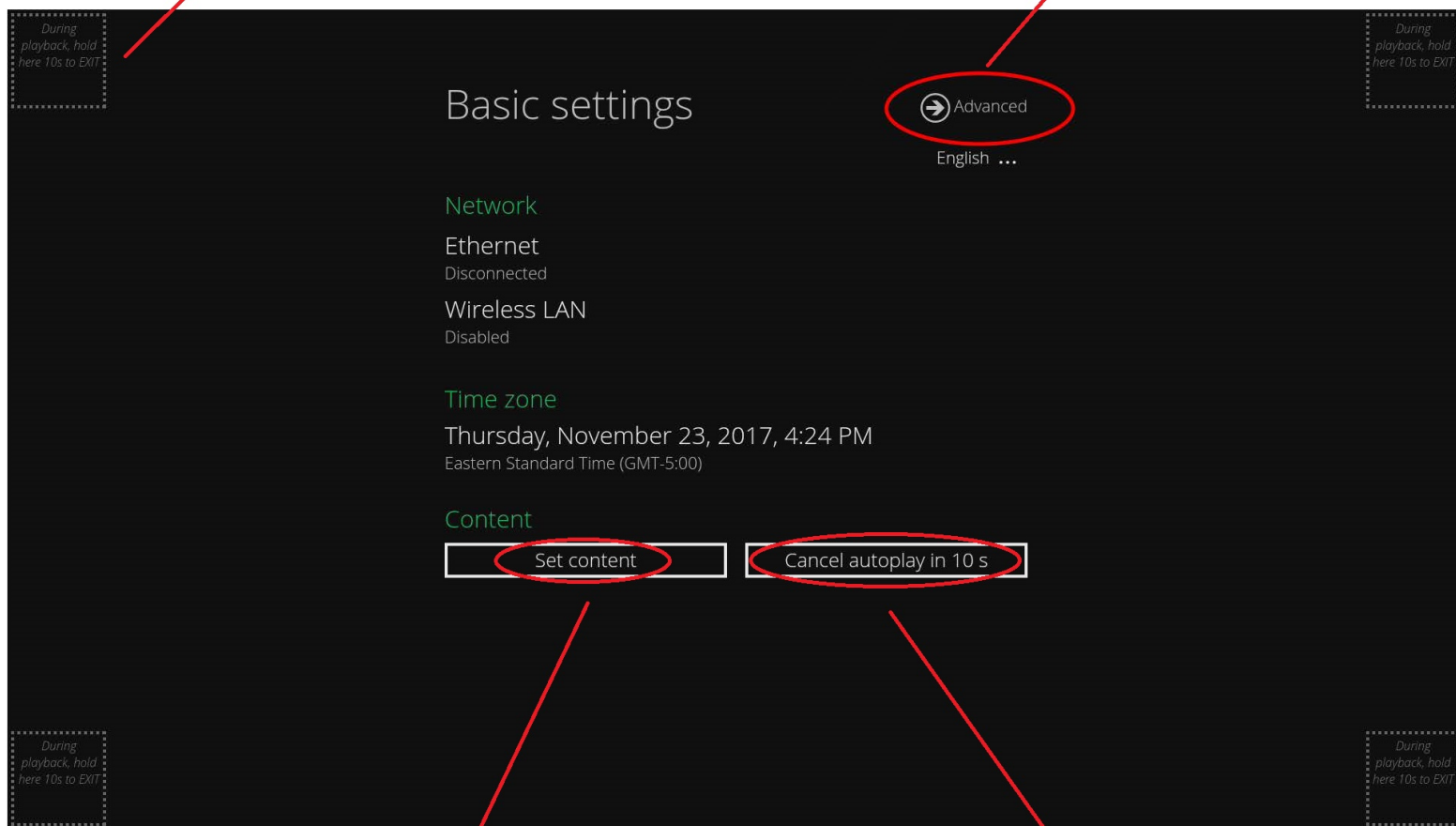


## 5. MP-1080HDM STARTUP

When MP-1080HDM is powered on it will start with an intro; the 'Basic Settings' screen allowing 15 seconds before it starts autoplays the last uploaded playlist.

Left click and hold for 10 sec. in any corner of the screen at anytime while content is playing to stop playlist and access Basic Settings screen

Click 'Advanced' to access MP-1080HDM advanced settings



Type in a website address with HTML5 support for instant web playing

Click 'Play' to start playlist or Click 'Cancel Autorun' to stop autoplay



## 6. SOFTWARE

### 6.1 Software Download

Download and install **AV SignPro** software from below:

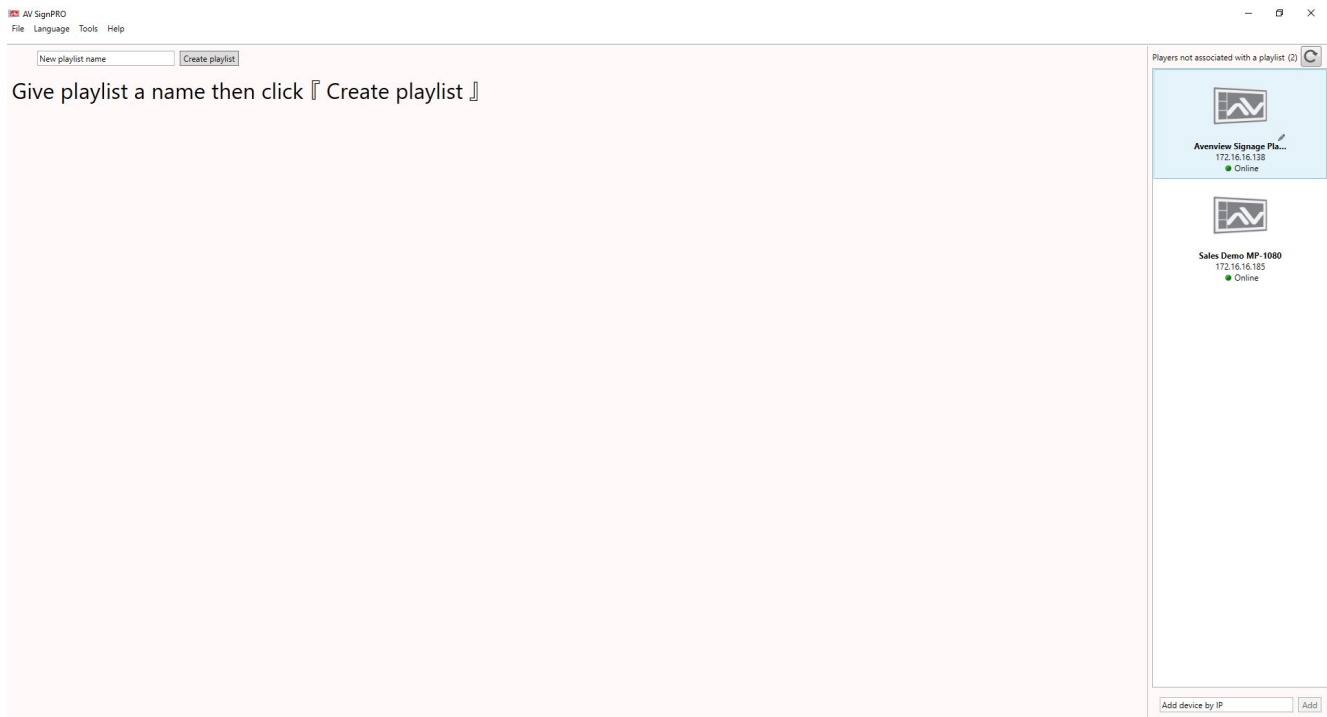
[http://www.avenview.com/downloads/AVSignPRO\\_Setup-3.0.3.117.msi](http://www.avenview.com/downloads/AVSignPRO_Setup-3.0.3.117.msi)



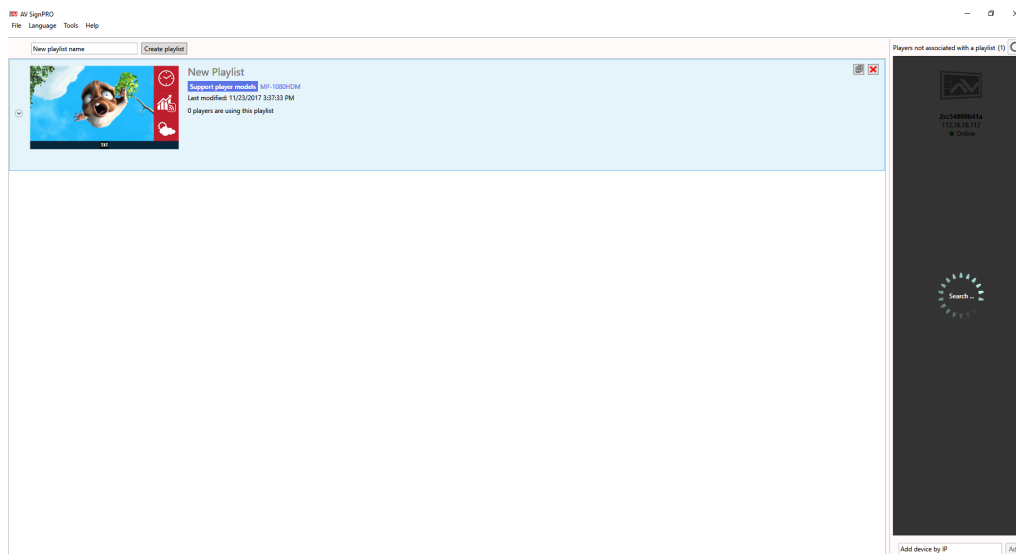
Double click software icon to launch the application, AV SignPRO will start with the main screen to create a playlist.

### 6.2 Create a Playlist

Start by typing a playlist name then click on 'Create Playlist'



- List of active "online" players will be showing instantly on the right side panel of the software (*click refresh to update the list and search for new devices*)



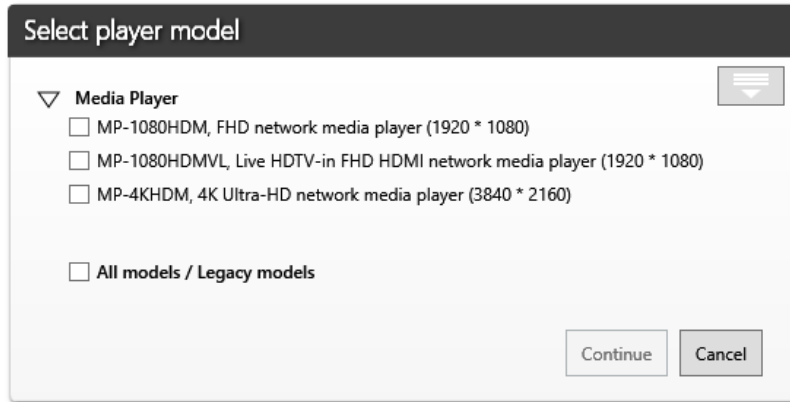


## 6.3 Select a Player

Click '**Create Playlist**' to create a new playlist to be uploaded to a player.

Select Player Model:

- Select the player model. If you're not sure of the player model '**All models / Legacy models**' can be selected for universal compatibility





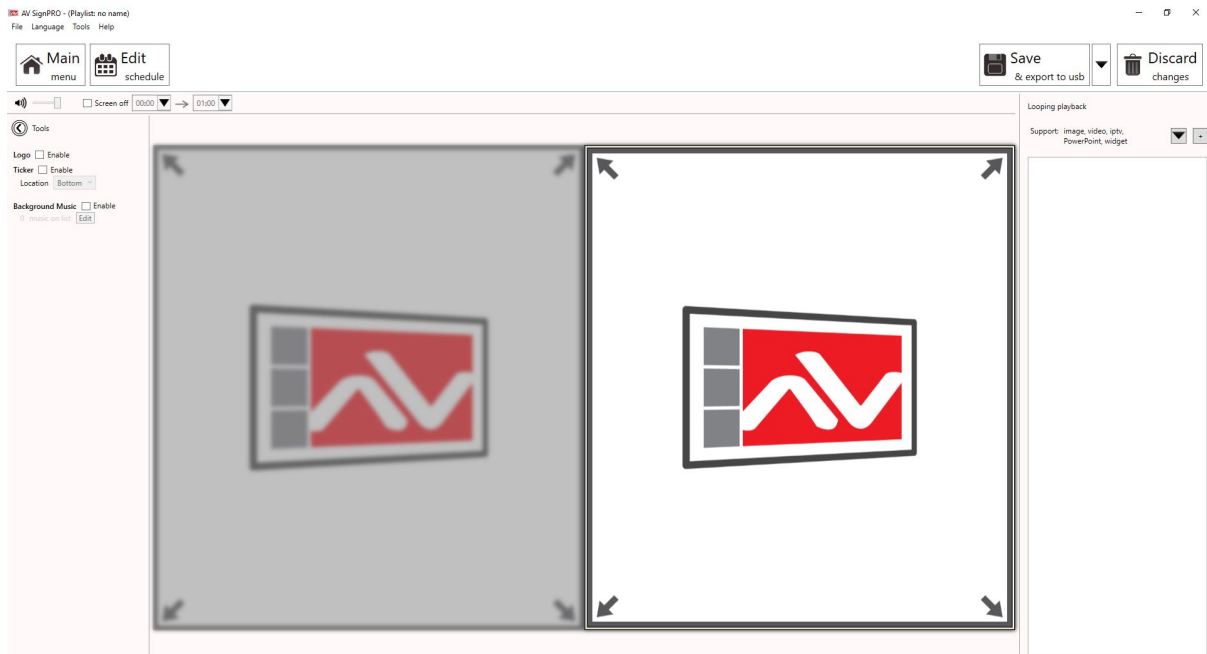
## 6.4 Select a Template

After selecting the player model a preset layouts/templates will be displayed to choose from. Select the desired template. Other properties can be selected from the left panel such as output resolution, orientation, etc..





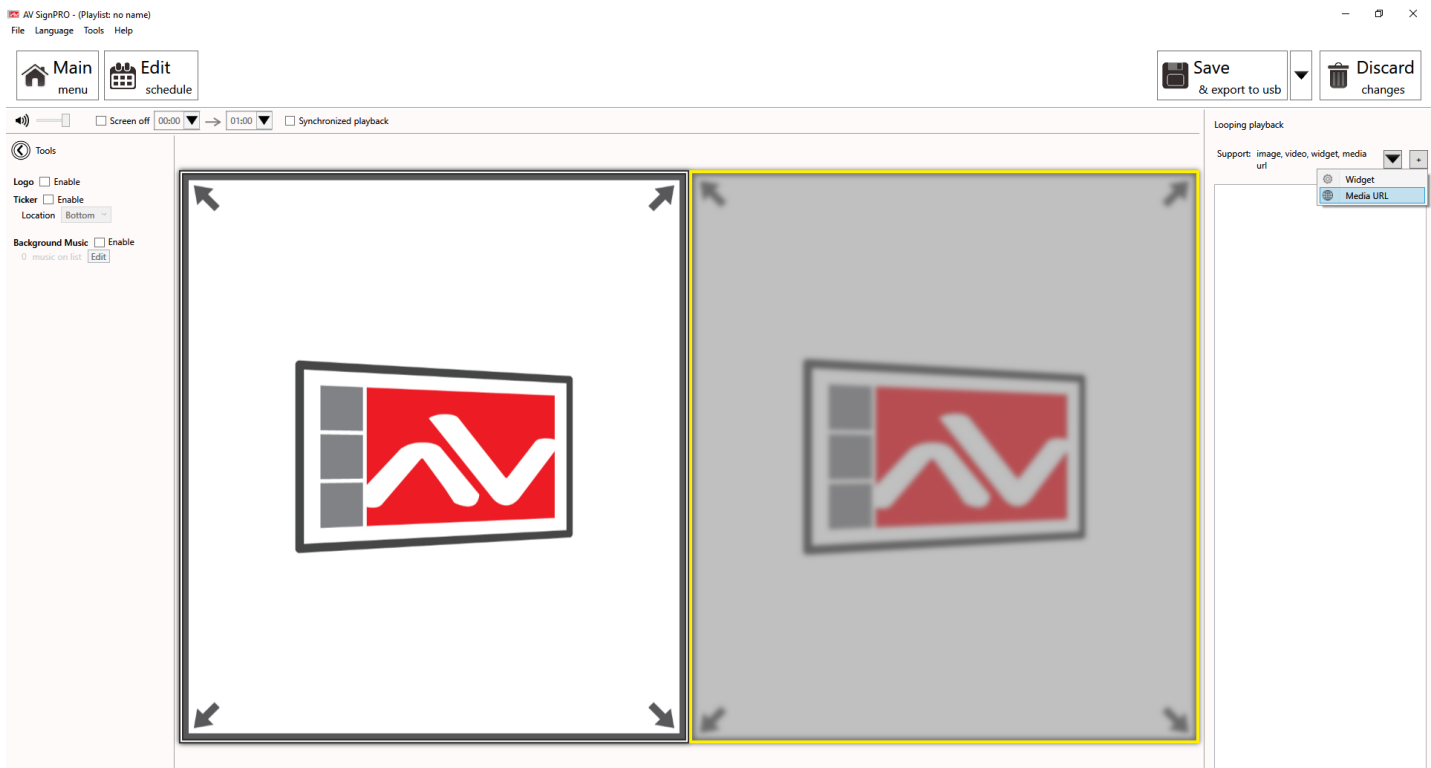
## 6.5 Edit Template

Click on template empty zones. Media uploading panel will appear on the right side of software main screen. Contents can be uploaded by selecting  or .



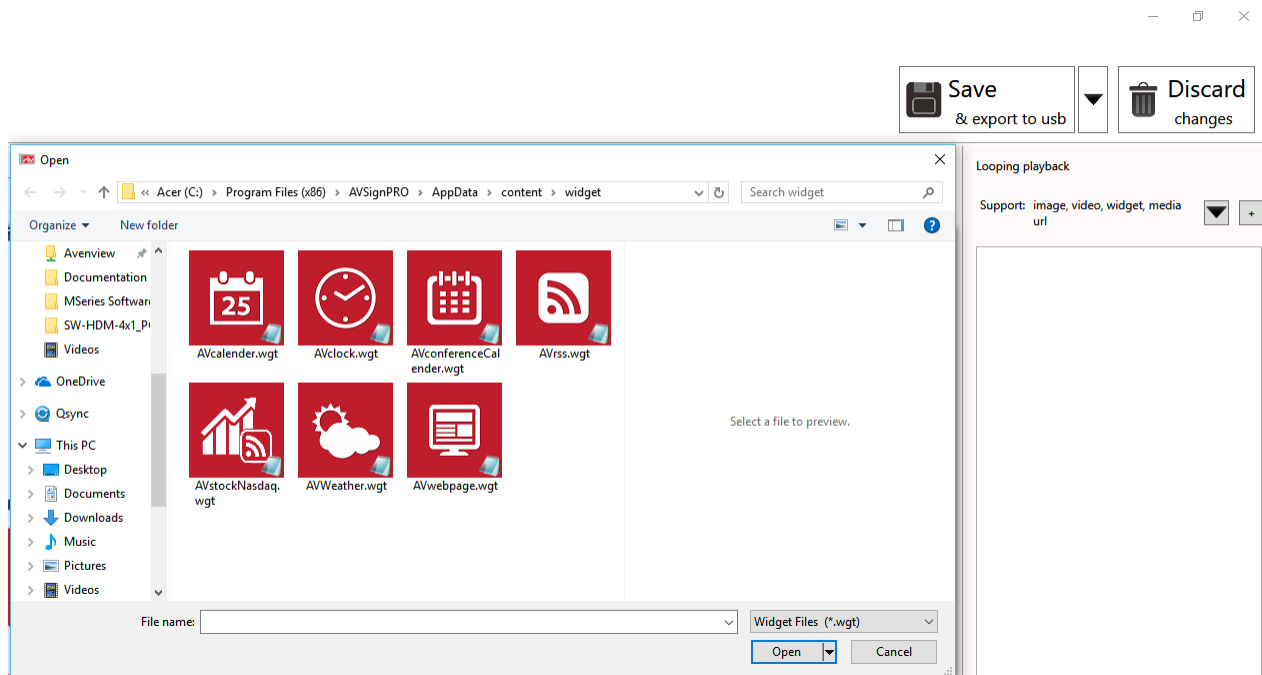
## 6.6 Uploading Contents

Click  to upload a video, image or a document.  
Click  to upload a widget or link an internet stream (IPTV)



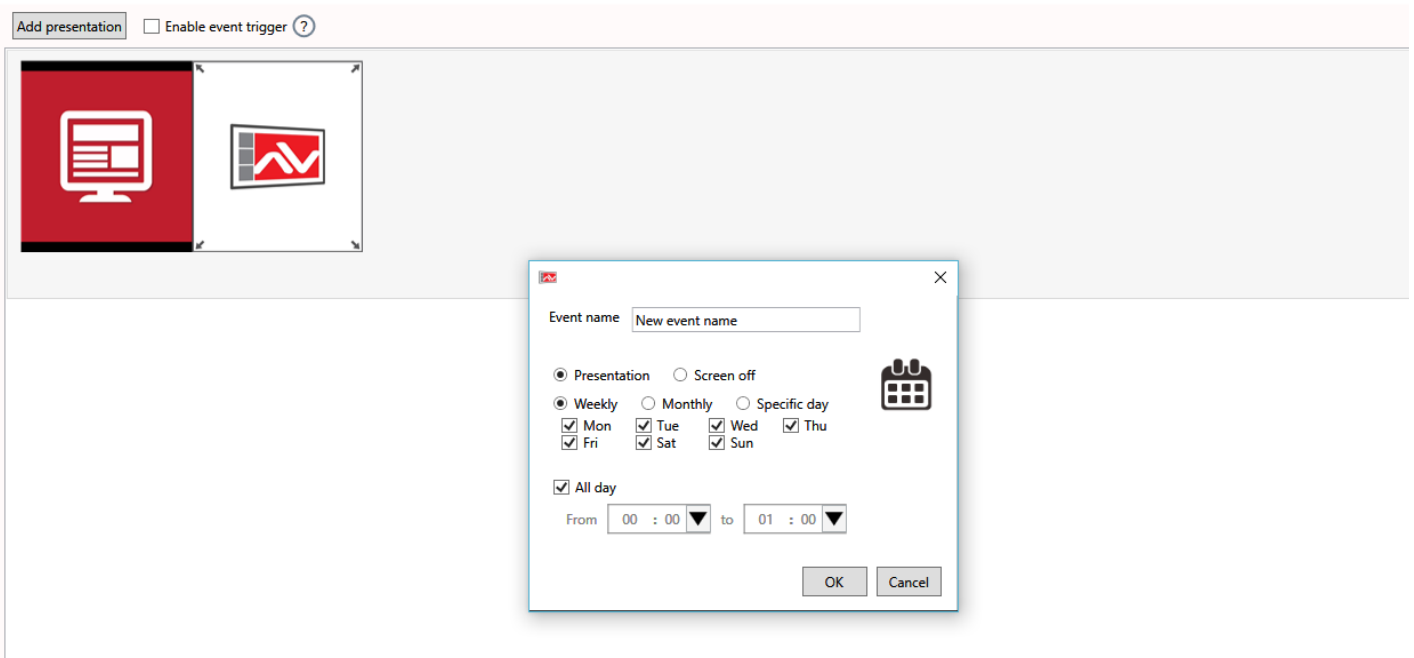
## 6.7 Widget Selection

Seven preloaded widgets can be uploaded. More can be added by saving Widget files in the Widget folder.



## 6.8 Set a Schedule

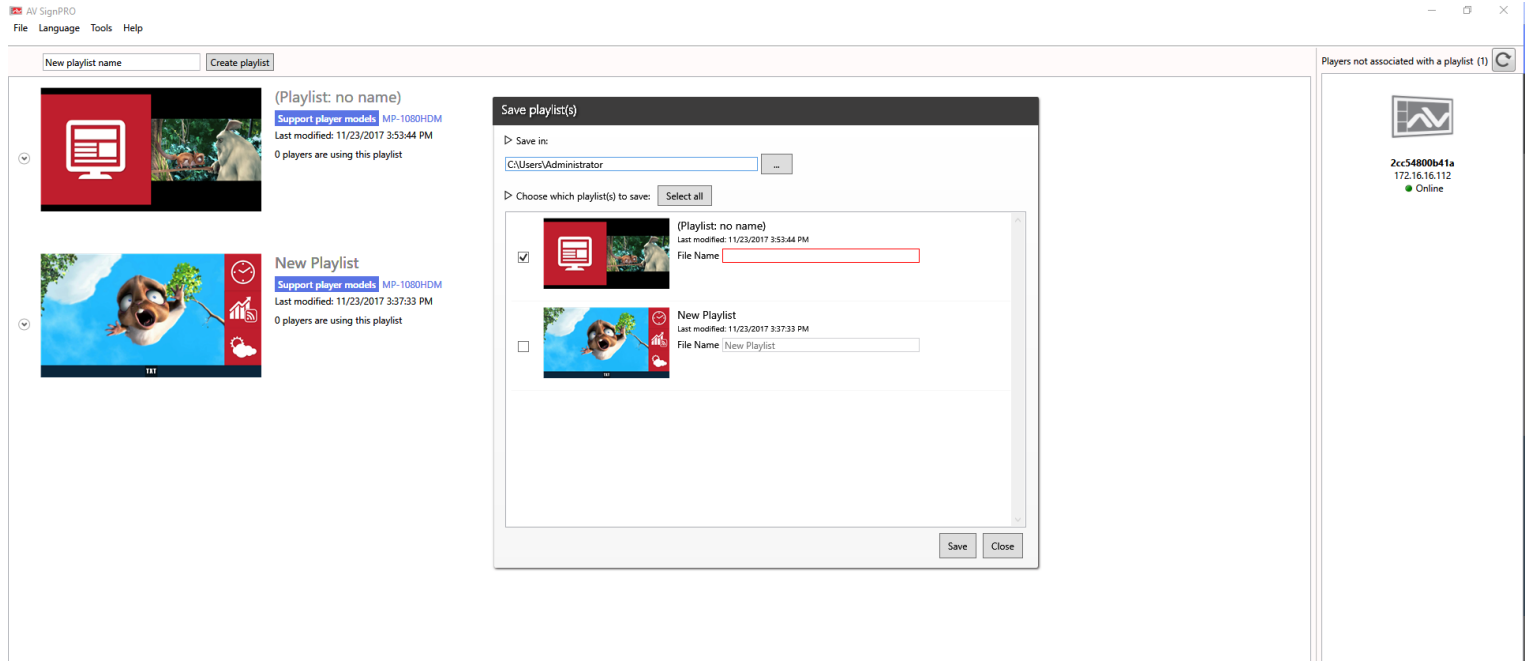
Click 'Edit Schedule' from top left menu to set a schedule for all created playlist



## 6.9 Save/Load Playlists to PC

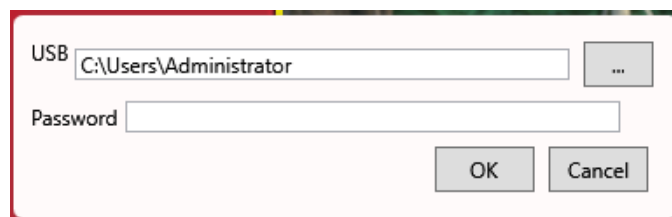
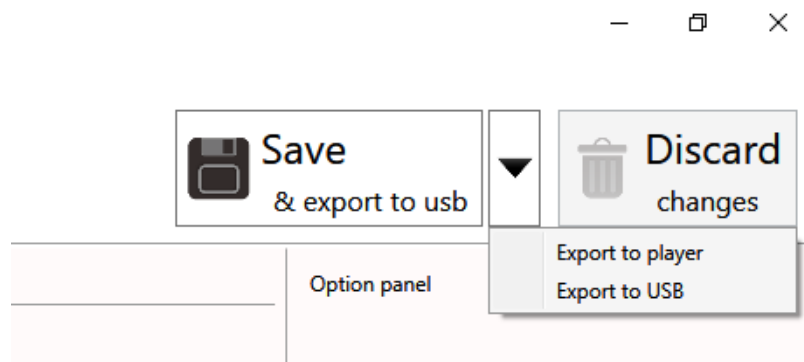
Click **'File'** then select **'Save'** to save the created playlist to a destination.

Click **'File'** then select **'Load'** to load a saved playlist.



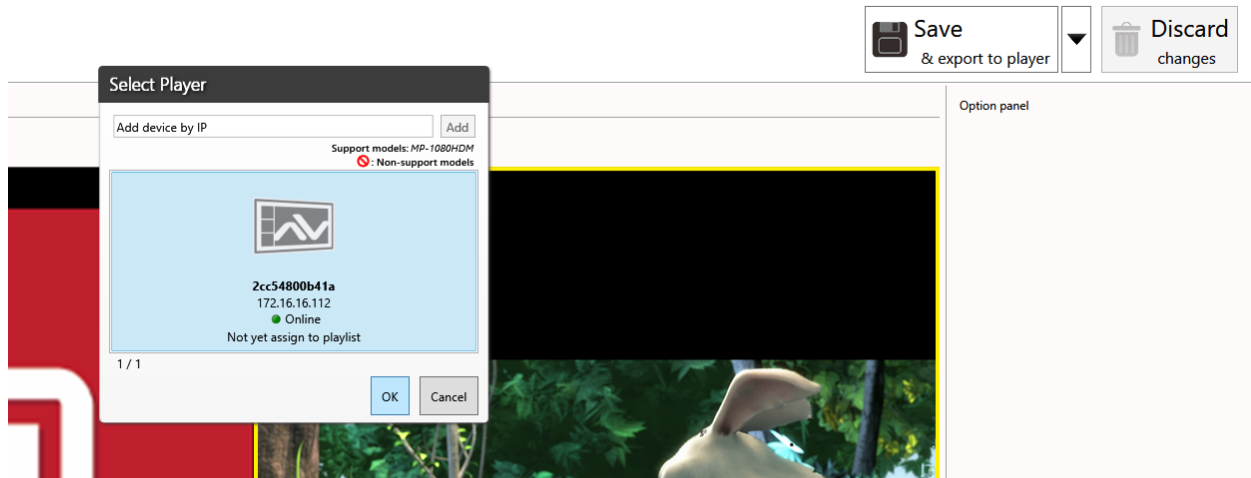
## 6.10 Save/Export Playlist to Player/USB

Click  from top right menu to either export created media content to a player or transfer content to a USB flash drive



## 6.11 Send to Player

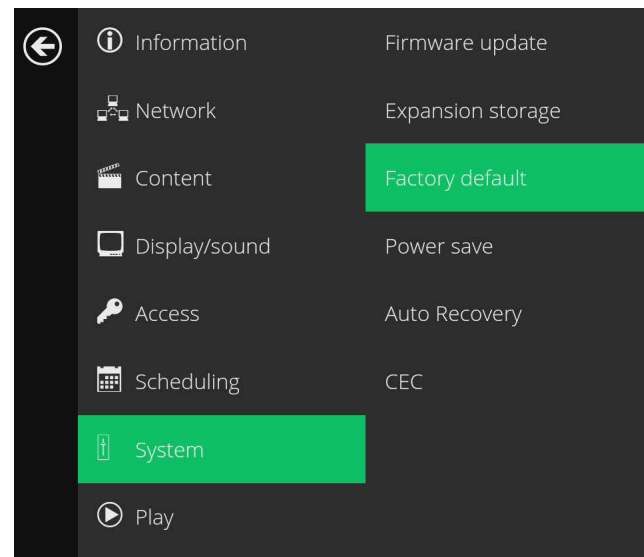
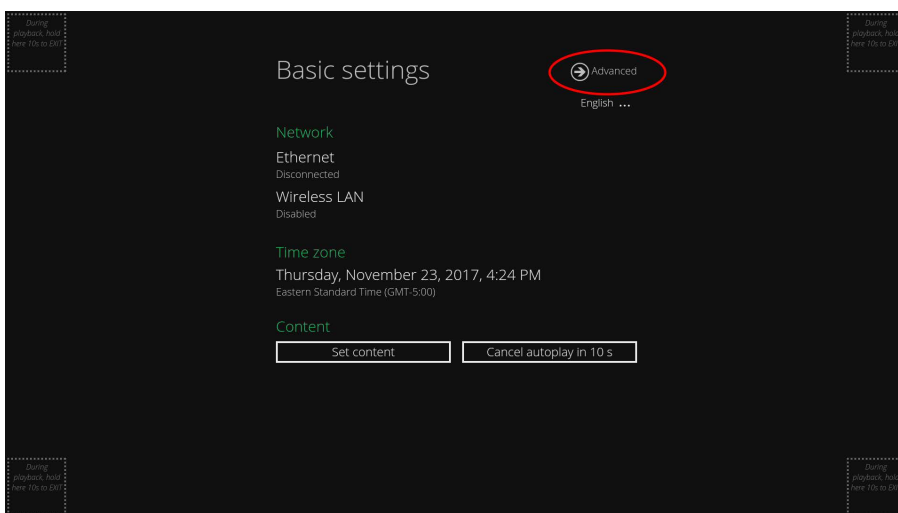
Click ▾ from top right menu and select '**Export to Player**'. A list of online players will show up. Select a single player or multiple players to send content to.



## 6.12 Delete/Reset Contents

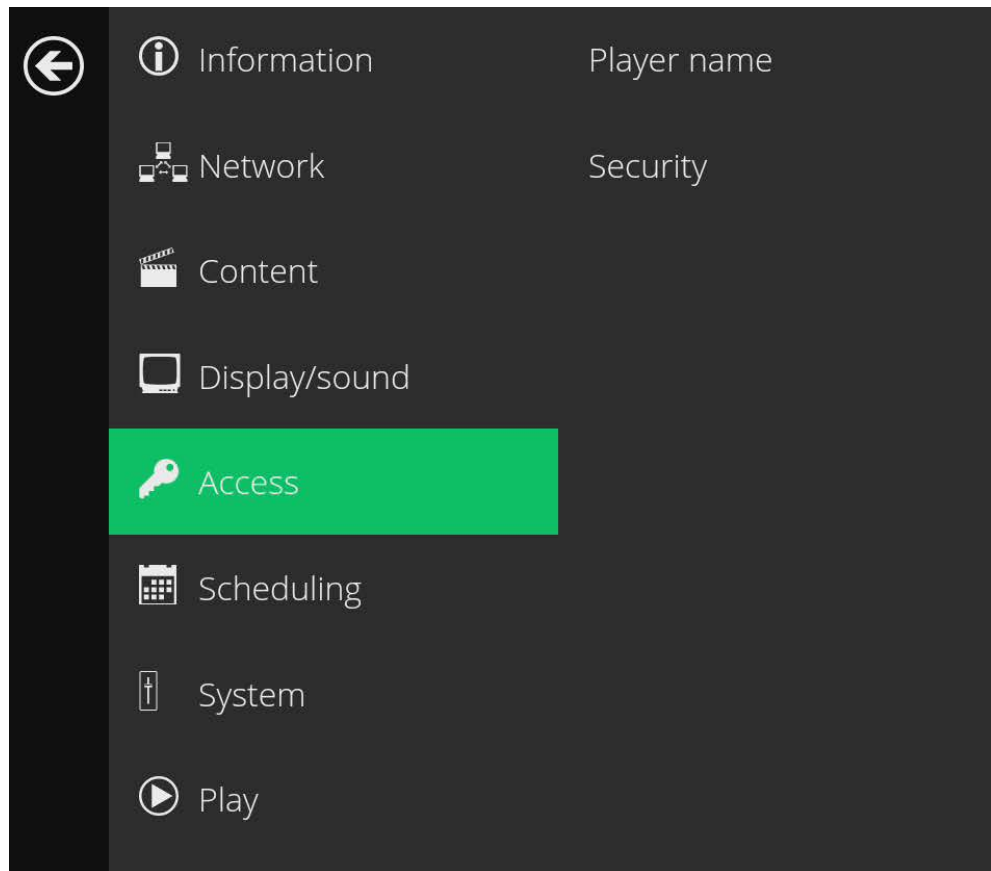
- To delete player contents upload a new playlist or an empty template that will overwrite the existing playlist on the player.
- If no playlist to be uploaded to the player, factory reset the digital media player to delete all playlist previously created.
- From Player 'Basic Settings' page click 'Advanced' - 'System' and Select 'Factory Default'

Note: 'Factory default' will delete all playlists created and media saved and will restore MP-1080HDM to its factory default state



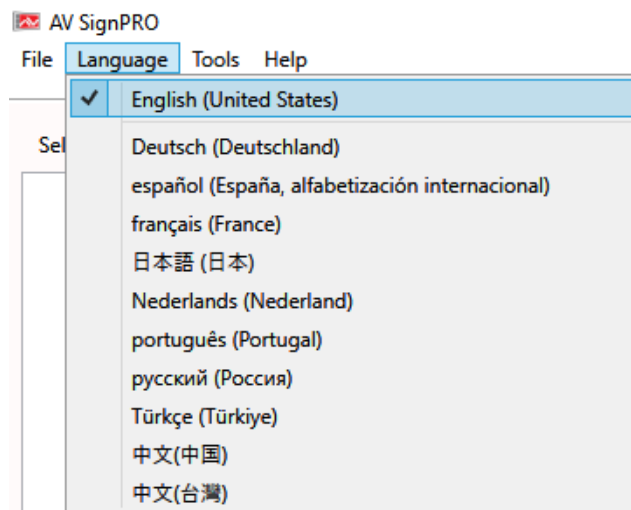
### 6.13 Password Protection

MP-1080HDM can be protected from any access or content changes using a password that can be set from 'Advanced menu' and selecting 'Access'.



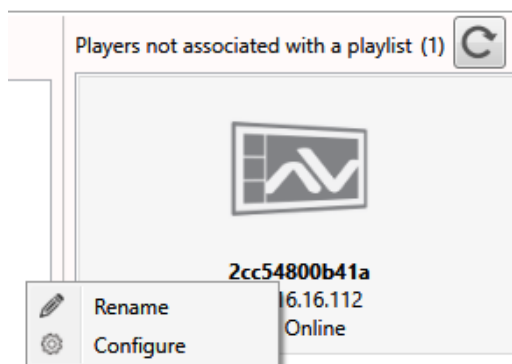
### 6.14 Language Selection

The AV SignPRO software is available in a number of languages. To change the language of the software, click on "Language" located on the top bar, and select your desired language.



## 6.15 Device Configuration

Advanced configuration settings can be changed on a per device basis by selecting a player in the device list, right clicking, and selcting "Configure"



## 6.16 General Settings

Player Name: Name your player for easy identification

Content URL: The URL your PC uses to upload playlists, for debug use

Time Zone: For the internal clock

Output Resolution: Choose output resolution, select from NTSC, PAL, 720p, 1080p or the display's native resolution

Display Orientation: Mount display upsidedown or sideways, content will adjust to orientation

Sound Level: Change the output volume

Password: Password protect the player from unauthorized changes

A screenshot of a "Configure player" dialog box. At the top, it says "Configure player : 2cc54800b41a" and "Changed settings: (no settings)". Below this are three tabs: "General", "Network", and "Troubleshooting". The "General" tab is selected. The title of the tab is "General settings". The form contains the following fields: "Player name" with the value "2cc54800b41a"; "Content URL" with an empty text box; "Time zone" with a dropdown menu showing "US/Eastern"; "Output resolution" with a dropdown menu showing "auto"; "Display orientation" with a dropdown menu showing "auto"; "Sound level" with a horizontal slider bar; and "Password" with an empty text box.

## 6.17 Network Settings

Ethernet Settings (Ethernet or Wi-Fi can be used to connect to a network)

IP Assignment: Static or DHCP. Network settings will auto-populate when DHCP is selected.

IP: IP address of the player

Netmask: Netmask for subnet selection

Gateway: IP of your router or switch

DNS Server 1: Resolves URLs into IP addresses. Leave blank to use your ISP's DNS server

DNS Server 2: Resolves URLs into IP addresses. Leave blank to use ISP's DNS server

## 6.18 Troubleshooting

Download Logs: Automatically creates an email addressed to

support@avenview.com and attaches debug logs with a screenshot for review

Screenshot: Get the status of your player at a glance

Reboot Player: Reboots the MP-1080HDM. The status bar on the left will indicate when unit has come back online

Configure player : 2cc54800b41a

Changed settings: IP assignment

General Network Troubleshooting

### Ethernet settings

☒ Use Ethernet for network connection

IP assignment Static

IP

Netmask

Gateway

DNS server 1

DNS server 2

### Wireless settings

☐ Use wireless for network connection

SSID

Authentication

Password

Select player(s) to configure



2cc54800b41a

172.16.16.112

Online

Reboot 1/2

Cancel

Configure player : 2cc54800b41a

Changed settings: IP assignment

General Network Troubleshooting

### Troubleshooting

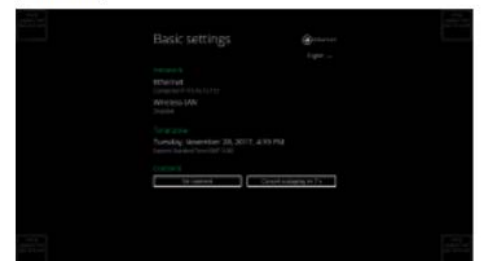
Download logs

☒ Email logs to support after download

☐ Save logs to computer: C:\Users\amet\Documents

### Screenshot

Refresh



### Reboot player

Reboot player now





## 7. PARTENERED SOFTWARE

Avenview MP-1080HDM users can use a selected number of third party **content management softwares(CMS)** -from the list below- other than the free **AV SignPro Software** provided with their purchase of any Avenview Digital Signage Player for added convinience and flexibility in media creation.

### CMS Enterprise



### Room Management



### General



## 8. SPECIFICATIONS

ITEM	DESCRIPTION
<b>UNITS</b>	MP-1080HDM
<b>UNIT DESCRIPTION</b>	1080p Digital Signage Player
<b>HDMI COMPLIANCE</b>	1.4
<b>PRIVACY AND SECURITY</b>	Password Protected
<b>VIDEO FORMAT SUPPORTED</b>	H.264/AVC up to 1080p (1920x1080), MPEG-4 up to 1080p (1920x1080), MPEG-2 up to 1080p (1920x1080), MPEG-1 up to 1080p (1920x1080), VC-1 up to 1080p (1920x1080)
<b>CONNECTIVITY</b>	Gigabit Ethernet, Wireless: 802.11 b/g/n (2.4 GHz), HDMI 1.4, Micro USB for ADB, USB 2.0 x 2, 3.5mm analog stereo audio out, S/PDIF out, AniBeacon™ (BLE), Optional 3G/4G mobile module via USB
<b>AUDIO SUPPORT</b>	Supports LPCM 2/5.1/7.1CH, Dolby Digital 2/5.1CH, DTS 2/5.1CH (Bypass), DolbyTrueHD and DTS-HD Master Audio
<b>CONTENT MANAGEMENT</b>	AVSignPRO Software, 3rd party solution (optional license)
<b>CONTROL</b>	PC Software and OSD
<b>INPUT</b>	1x RJ45, 2x USB 2.0, 1x Micro SD Slot
<b>OUTPUT</b>	1x HDMI, 1x SPDIF (Optical), 1x 3.5mm Audio Out
<b>HDMI CONNECTOR</b>	Type A (19 pin female)
<b>LOCAL STORAGE</b>	8 GB eMMC built-in (approx. 360 minutes of typical 720p video @3 Mbps) expandable up to 32 GB with Micro SD Card
<b>POWER ADAPTER</b>	100-240V, 50-60 Hz, 0.5A Max. 12V/1.5A DC
<b>POWER CONSUMPTION</b>	3W Max
<b>DIMENSION L X W X H</b>	5.45" x 5.04" x 0.9"
<b>WEIGHT</b>	0.74 lbs

### Environmental

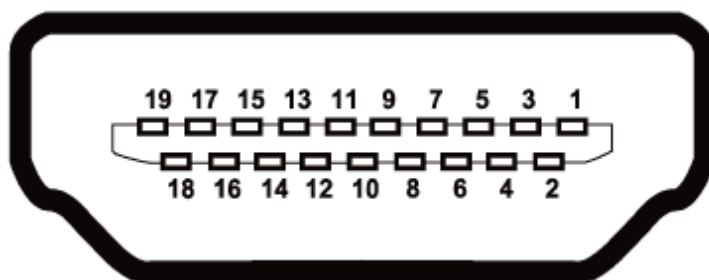
<b>OPERATING TEMPERATURE</b>	32° ~ 140°F (0° to 60°C)
<b>STORAGE TEMPERATURE</b>	-4° ~ 140°F (-20° ~ 60°C)
<b>RELATIVE HUMIDITY</b>	20~90% RH.(no condensation)

### PERFORMANCE GUIDE FOR HDMI OVER CATEGORY CABLE TRANSMISSION

PERFORMANCE RATING		TYPE OF CATEGORY CABLE		
WIRING	SHIELDING	CAT5	CAT5E	CAT6
<b>SOLID</b>	UNSHIELDED (UTP)	★★★	★★★★★	★★★★★
	SHIELDED (STP)	★★★	★★★	★★★★★
<b>STRANDED</b>	UNSHIELDED (UTP)	★	★★	★★
	SHIELDED (STP)	★	★	★★
<b>TERMINATION</b>		PLEASE USE EIA/TIA-568-B TERMINATION (T568B) AT ANY TIME		



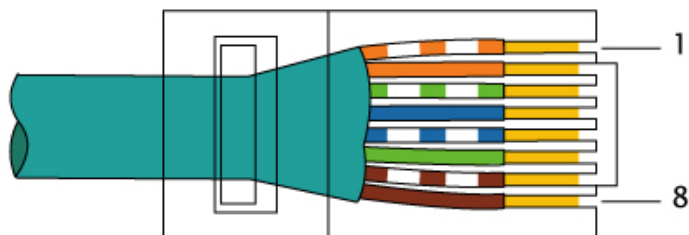
## 9. PIN & WIRING STANDARD DEFINITION



**TYPE A (RECEPTACLE) HDMI**

Pin 1	TMDS Data2+	Pin 11	TMDS Clock Shield
Pin 2	TMDS Data2 Shield	Pin 12	TMDS Clock-
Pin 3	TMDS Data2-	Pin 13	CEC
Pin 4	TMDS Data1 +	Pin 14	Reserved (N.C. on device)
Pin 5	TMDS Data1 Shield	Pin 15	SCL
Pin 6	TMDS Data1-	Pin 16	SDA
Pin 7	TMDS Data0+	Pin 17	DDC/CEC Ground
Pin 8	TMDS Data0 Shield	Pin 18	+5V Power
Pin 9	TMDS Data0-	Pin 19	Hot Plug Detect
Pin 10	TMDS Clock+		

**CAT5E/6 WIRING STANDARD**



**EIA/TIA-568B**

## Avenview Warranty Certificate

AVENVIEW CORP. ("Avenview") warrants Avenview-branded product(s) contained in the original packaging against defects in materials and workmanship when used normally in accordance with Avenview's enclosed manual guidelines for a period of THREE (3) YEARS from the date of original retail purchase - Warranty Period. Avenview's published guidelines include but are not limited to information contained in technical specifications, user manuals and service communications.

**LABOR:** During the Warranty Period of THREE (3) YEARS, Avenview will repair or replace the product(s) at no cost using new or used parts equivalent to novel performance and reliability if the product(s) is determined to have abide by Avenview's published guidelines. Cost of Labor applicable to product(s) after Warranty Period. For labor costs, please contact [support@avenview.com](mailto:support@avenview.com).

**PARTS:** During the Warranty Period of THREE (3) YEARS, Avenview will supply new or rebuilt replacements in exchange for defective parts of the product(s) at no cost if the product(s) is determined to have abide by Avenview's published guidelines. Cost of Parts applicable to product(s) after Warranty Period. For part(s) costs, please contact [support@avenview.com](mailto:support@avenview.com).

To obtain Warranty: (a) proof of purchase in the form of a bill of sale or receipted invoice reflecting that the registered product(s) is within warranty period must be presented to obtain warranty service; (b) product(s) must be registered at time of purchase. Failure to do so will result in applicable parts and labor charges. Returning product(s) must be shipped in Avenview's original packaging or in packaging pertaining equal degree of protection to Avenview's. Both Avenview and purchaser are responsible for freight charges and brokerages when shipping the product(s) to the receiver.

### NOT COVERED BY THIS WARRANTY

This warranty does not apply to any non-Avenview branded product(s); non-registered Avenview product(s). This warranty does not apply: (a) to cosmetic damage, including but not limited to scratches, dents and broken cords; (b) to damage caused by use with another product; (c) to damage caused by accident, abuse, misuse, liquid contact, fire, earthquake or other external cause; (d) to damage caused by operating the Avenview product(s) outside Avenview's manuals or guidelines; (e) to damage caused by service performed by anyone who is not a representative of Avenview or an Avenview authorized personnel; (f) to defects caused by normal wear and tear or otherwise due to the normal aging of the Avenview product(s), or (g) if any serial number has been removed or defaced from the Avenview product(s).

AVENVIEW IS NOT LIABLE FOR DIRECT, SPECIAL, INCIDENTAL OR CONSEQUENTIAL DAMAGES RESULTING FROM ANY BREACH OF WARRANTY OR CONDITION, OR UNDER ANY OTHER LEGAL THEORY, INCLUDING BUT NOT LIMITED TO LOSS OF USE; LOSS OF REVENUE; LOSS OF ACTUAL OR ANTICIPATED PROFITS (INCLUDING LOSS OF PROFITS ON CONTRACTS); LOSS OF THE USE OF MONEY; LOSS OF ANTICIPATED SAVINGS; LOSS OF BUSINESS; LOSS OF OPPORTUNITY; LOSS OF GOODWILL; LOSS OF REPUTATION; LOSS OF, DAMAGE TO, COMPROMISE OR CORRUPTION OF DATA; OR ANY INDIRECT OR CONSEQUENTIAL LOSS OR DAMAGE REPAIR OR REPLACEMENT AS PROVIDED UNDER THIS WARRANTY IS THE EXCLUSIVE REMEDY OF THE CONSUMER.

Some states do not allow the inclusion or limitation of incidental or consequential damages, or allow limitations on duration implements of the Warranty Period; therefore the above limitations or exclusions may not be applicable to you. This warranty gives you specific legal rights, and you may have other rights which vary from state to state.



1100 Military Road, Kenmore, NY 14217  
1.866.508.0269





## Notes

## Notes





Control Your Video

## TECHNICAL SUPPORT

### CONTACT US



Phone: 1 (866) 508 0269



Email: [support@avenview.com](mailto:support@avenview.com)



#### **Avenview Canada**

151 Esna Park Drive, Unit 11-12  
Markham, ON L3R 3B1  
Phone: +1 905 907 0525  
Email: [info@avenview.com](mailto:info@avenview.com)  
Sales: [sales@avenview.com](mailto:sales@avenview.com)

#### **Avenview USA**

1100 Military Road  
Kenmore, NY 14217  
Phone: +1 716 218 4100 x223  
Fax: +1 866 387 8764  
Email: [info@avenview.com](mailto:info@avenview.com)

#### **Avenview Europe**

Phone: +31 085 2100 613  
Email: [info@avenview.eu](mailto:info@avenview.eu)

#### **Avenview Asia**

Email: [wenxi@avenview.com.hk](mailto:wenxi@avenview.com.hk)  
Sales: [sales@avenview.com.hk](mailto:sales@avenview.com.hk)

#### **Disclaimer**

While every precaution has been taken in the preparation of this document, Avenview Inc. assumes no liability with respect to the operation or use of Avenview hardware, software or other products and documentation described herein, for any act or omission of Avenview concerning such products or this documentation, for any interruption of service, loss or interruption of business, loss of anticipatory profits, or for punitive, incidental or consequential damages in connection with the furnishing, performance, or use of the Avenview hardware, software, or other products and documentation provided herein.

Avenview Inc. reserves the right to make changes without further notice to a product or system described herein to improve reliability, function or design. With respect to Avenview products which this document relates, Avenview disclaims all express or implied warranties regarding such products, including but not limited to, the implied warranties of merchantability, fitness for a particular purpose, and non-infringement.

Rev. 04 11/2017