

4 Port VGA/Component Switch with Audio

USER GUIDE

Model #: VGA-VS-4X1



HD ready 1080p **WUXGA 1920x1200**

© 2010 Avenview Inc. All rights reserved.

The contents of this document are provided in connection with Avenview Inc. ("Avenview") products. Avenview makes no representations or warranties with respect to the accuracy or completeness of the contents of this publication and reserves the right to make changes to specifications and product descriptions at any time without notice. No license, whether express, implied, or otherwise, to any intellectual property rights is granted by this publication. Except as set forth in Avenview Standard Terms and Conditions of Sale, Avenview assumes no liability whatsoever, and disclaims any express or implied warranty, relating to its products of Avenview Inc. is strictly prohibited.

Table of Contents

Section 1: Getting Started	2
1.1 Important Safeguards	2
1.2 Safety Instructions	2
1.3 Regulatory Notices Federal Communications Commission (FCC).....	3
1.4 Introduction	3
1.5 Package Contents.....	3
1.6 Before Installation.....	3
1.7 Panel Description	5
1.8 IR Remote Control.....	6
1.9 Installation.....	7
1.10 Software Operation.....	7
1.11 General Troubleshooting	8
Section 2: Specifications.....	8

Section 1: Getting Started

1.1 Important Safeguards

Please read all of these instructions carefully before you use the device. Save this manual for future reference.

What the warranty does not cover

- Any product, on which the serial number has been defaced, modified or removed.
- Damage, deterioration or malfunction resulting from:
 - Accident, misuse, neglect, fire, water, lightning, or other acts of nature, unauthorized product modification, or failure to follow instructions supplied with the product.
 - Repair or attempted repair by anyone not authorized by us.
 - Any damage of the product due to shipment.
 - Removal or installation of the product.
 - Causes external to the product, such as electric power fluctuation or failure.
 - Use of supplies or parts not meeting our specifications.
 - Normal wear and tear.
 - Any other causes which does not relate to a product defect.
- Removal, installation, and set-up service charges.

1.2 Safety Instructions

The VGA-VS-8X, Avenview 4 Port VGA/Component Switch with Audio has been tested for conformance to safety regulations and requirements, and has been certified for international use. However, like all electronic equipment's, the VGA-VS-4X1 should be used with care. Read the following safety instructions to protect yourself from possible injury and to minimize the risk of damage to the unit.

- Do not dismantle the housing or modify the module.
- Dismantling the housing or modifying the module may result in electrical shock or burn.
- Refer all servicing to qualified service personnel.
- Do not attempt to service this product yourself as opening or removing housing may expose you to dangerous voltage or other hazards
- Keep the module away from liquids.
- Spillage into the housing may result in fire, electrical shock, or equipment damage. If an object or liquid falls or spills on to the housing, unplug the module immediately.
- Have the module checked by a qualified service engineer before using it again.
- Do not use liquid or aerosol cleaners to clean this unit. Always unplug the power to the device before cleaning.

1.3 Regulatory Notices Federal Communications Commission (FCC)

This equipment has been tested and found to comply with Part 15 of the FCC rules. These limits are designed to provide reasonable protection against harmful interference in a residential installation.

Any changes or modifications made to this equipment may void the user's authority to operate this equipment.

1.4 Introduction

Avenview VGA-VS-4X1, 4 Port VGA/Component Switch with Audio receives and amplifies up to 4 VGA or component inputs, perfectly switches the desired input to the VGA/component equipped monitor or receiver. The switch supports VGA or component video up to 350MHz. The re-transmitted video quality is guaranteed and the longest transmission is up to 65m (210ft). Therefore, VGA-VS-4X1 offers the most convenient and cost effective means for swift switch of high quality PC graphics and HDTV videos with crystal clear audio in the market. With equipped audio switch, VGA-VS-4X1 is ready to be as a switch with stereo audio and ideally for boardroom, showroom, and exhibition. The control of VGA-VS-4X1 is versatile and easier through the IR remote control, the push button on front panel, or the RS-232 control on rear panel.

- VGA/component switch with 350MHz bandwidth
- Up to 8 graphics/video inputs
- LED indication
- Automatic detection of the VGA/component input
- Amplified video output with transmission length up to 65m (210ft)
- Multiple control by IR remote, push button, and RS-232 control

1.5 Package Contents

Before you start the installation of the converter, please check the package contents.

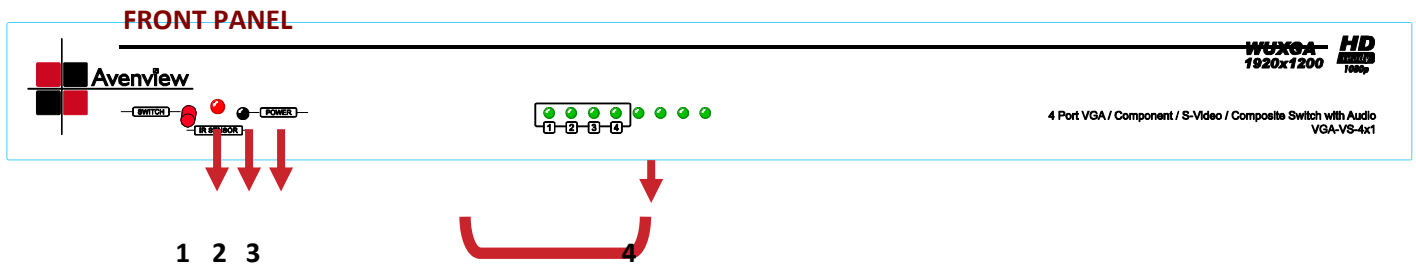
- VGA-VS-4X1 x 1
- IR Remote x 1
- Power Adapter (+5VDC) x 1
- User's Guide x 1

1.6 Before Installation

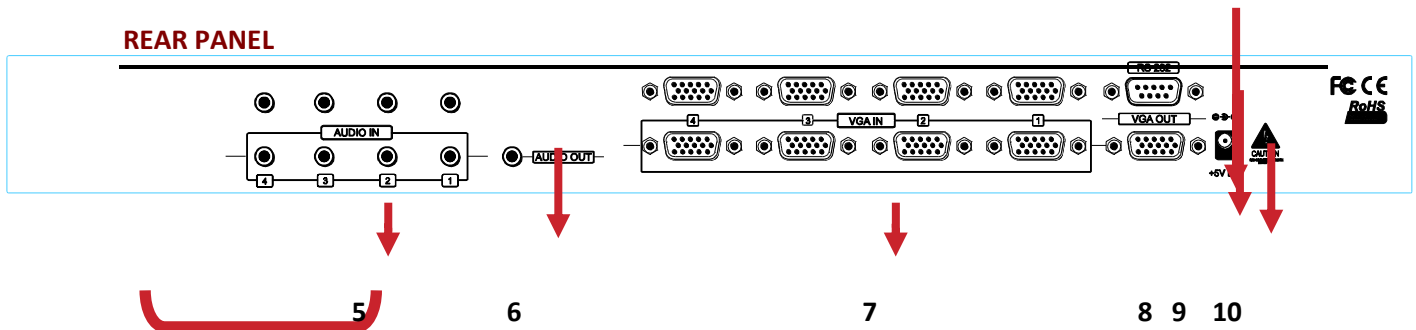
- Put the product in an even and stable location. If the product falls down or drops, it may cause an injury or malfunction.

- Don't place the product in too high temperature (over 50°C), too low temperature (under 0°C) or high humidity.
- Use the DC power adapter with correct specifications. If inappropriate power supply is used then it may cause a fire.
- Do not twist or pull by force ends of the optical cable. It can cause malfunction.

1.7 Panel Description






1. Push button for input switch	2. Infrared sensor
3. LED indicator for power	4. LED indicator for VGA input #1 ~ #8



5. 3.5mm audio socket for audio source #1 ~ #8	6. 3.5mm audio socket for selected audio output
7. VGA input source #1 ~ #8	8. RS-232 control port
9. Selected VGA output	10. 5V DC power jack

1.8 IR Remote Control



Function Key	Function Description
POWER	Turn on/off Power
	Switch the channel from the selected input to the next input
	Switch the channel from the selected input back to the prior input
SOURCE SELECT	Select one of the eight INPUT to be the input source
	Turn on/off AUTO DETECT which allows the input source can be automatically changed once the selected input is disconnected

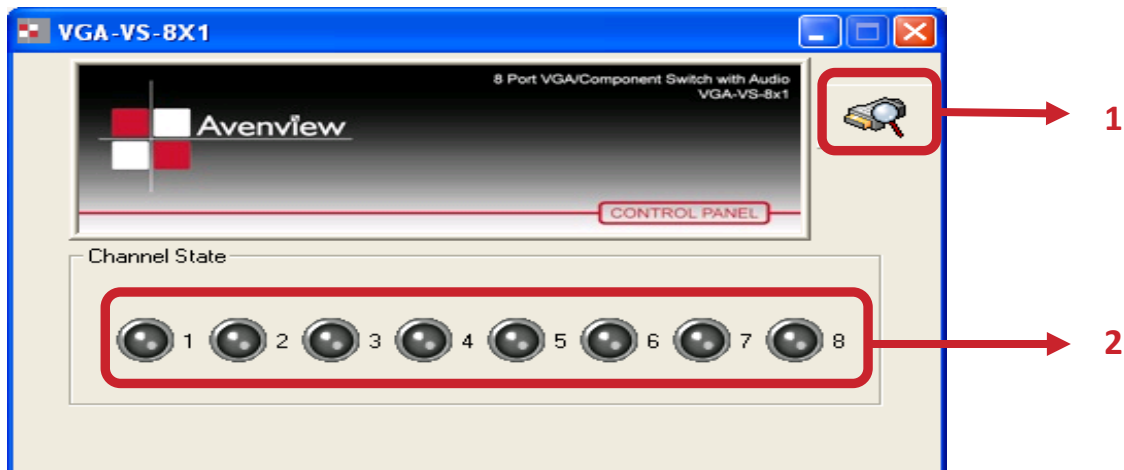


1.9 Installation

To setup Avenview VGA-VS-4X1 follow these steps for connecting to a device:

1. Power off display sources such as DVD player, set-top box, PC etc.
2. Connect VGA or component video sources to the video inputs (use VGA-to-component breakout cables to connect the component video sources)
3. Connect VGA cable to VGA-VS-4X1 and TV or projector (use VGA-to-component breakout cable for component TV or projector)
4. Plug in 5V DC power cord to power jack of VGA-VS-4X1
5. Power on VGA-VS-4X1 switch
6. Power on VGA/component sources and display
7. Use IR remote or push button on the front panel to switch between VGA or component inputs, or connect a computer through RS-232 port to switch the VGA or component sources.

1.10 Software Operation



1. Please click it for connecting with VGA-VS-4X1
2. Click button for switching among the eight inputs

1.11 General Troubleshooting

Problem	Possible Solutions
No Image	<ul style="list-style-type: none"> Check if connection to the computer and the monitor are correct.
Screen Defects Appear	<ul style="list-style-type: none"> This product supports up to UXGA resolution. Check the VGA and Component connection Check the maximum resolution range of the graphics card.

Section 2: Specifications

Item	Description
Unit	VGA-VS-4X1
Description	4X1 VGA Switch
Video Bandwidth	350MHz
Supported Input / Output	VGA / Component
Video Support	1080p, WUXGA (1920x1200 @60Hz)
Audio Support	Analog Stereo
Input	4 x VGA 4 x 3.5mm 1 x RS232
Output	1 x VGA 1 x 3.5mm
Earphone Jack	Analog Stereo Audio
Equalization (HD)	Up to 210ft (65m)
Power Supply	5V DC
Power Consumption	15 Watts (max)
Dimension (L x W x H)	17.3" x 2.6" x 1.7" (440 x 66 x 44 mm)
Weight	VGA-VS-4X1: 2.4 lbs (1.1kg) / whole package: 5.1 lbs (2.3kg)
<i>Environmental</i>	
Operation	32°F -131°F (0°C-55°C)



Disclaimer

While every precaution has been taken in the preparation of this document, Avenview Inc. assumes no liability with respect to the operation or use of Avenview hardware, software or other products and documentation described herein, for any act or omission of Avenview concerning such products or this documentation, for any interruption of service, loss or interruption of business, loss of anticipatory profits, or for punitive, incidental or consequential damages in connection with the furnishing, performance, or use of the Avenview hardware, software, or other products and documentation provided herein.

Avenview Inc. reserves the right to make changes without further notice to a product or system described herein to improve reliability, function or design. With respect to Avenview products which this document relates, Avenview disclaims all express or implied warranties regarding such products, including but not limited to, the implied warranties of merchantability, fitness for a particular purpose, and non-infringement.