

# HDM-C6IPX-SET

HDMI LAN Extender up to 120M  
over Single CAT5/6 with IR Support

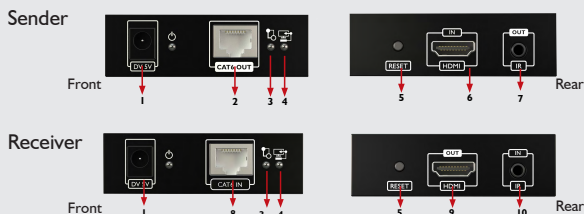
## HDMI EXTENDER OVER CAT5/6



### KEY FEATURES

- Extends HDMI up to 120m over single CAT5E/6;
- Supports HDMI, EDID, Support HDCP;
- Supports resolution HDTV / 1080Pp/60Hz, Vesa (1920x1080);
- Support point to point and multi-point to point transmission function;
- When used with a network switch, each VLAN acts as an independent HDMI over IP Channel on the network;
- Unmanaged switches can be cascaded up to 3 layer network, allowing the farthest display to be located up to 394 meters away from the source device. Each receiver can be located up to 120 meters away from each switch;
- Uses H.264 technology to process image compression on a fixed bandwidth.

### PANEL DESCRIPTION



- |                   |                      |
|-------------------|----------------------|
| <b>1</b> 5V DC    | <b>2</b> CAT5e/6 Out |
| <b>3</b> Data LED | <b>4</b> Link LED    |
| <b>5</b> Reset    | <b>6</b> HDMI IN     |
| <b>7</b> IR OUT   | <b>8</b> CAT5e/6 IN  |
| <b>9</b> HDMI OUT | <b>10</b> IR IN      |



### HDM-C6IPX-SET

1080p = 90m (295 feet) CAT5e  
1080p = 120m (394 feet) CAT6

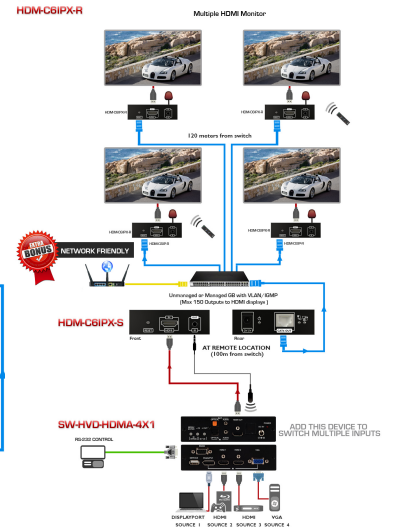
**CABLE INDEX**  
■ INPUT/OUTPUT  
■ CAT-5e / CAT-6  
■ IR CONTROL



Application Diagram 1  
POINT TO POINT

### HDM-C6IPX-SET

**CABLE INDEX**  
■ INPUT/OUTPUT  
■ CAT-5e / CAT-6  
■ IR CONTROL



Application Diagram 2  
LAN / SWITCH CONNECTION

ITEM	SPECIFICATION	
Model	HDM-C6IPX-S	HDM-C6IPX-R
Description	HDMI Transmitter	HDMI Receiver
HDMI Compliance	Full HD	
HDCP Compliance	Yes	
Video Bandwidth	H.264 Video Compression Format	
Input/Output	480i@60Hz, 480p@60Hz, 576i@50Hz, 576p@50Hz, 720p@50/60Hz, 1080i@50/60Hz, 1080p@50/60Hz	
Supported Resolution	Full HD: (1080p)-120meter (394feet) (CAT6)	
Resolution and Distance	Full HD: (1080p)-120meter (394feet) (CAT6)	
Audio Support	Surround Sound (up to 7.1 Ch) or Stereo Digital Audio	
IR Pass	Supports 20~60KHz IR devices	
RS 232 Support	No	
Input	1x HDMI	1x RJ45
Output	1x IR Out 1x RJ45	1x IR IN 1x HDMI
HDMI Connector	Type A (19 pin female)	
Dimensions (LxWxH)	3.8" x 3.7" x 0.9"	
Weight	0.3 lbs	
Power Supply	5V/1A	
Power Consumption	3W Max (each)	
Operating Temperature	32° ~ 140°F (0° to 60°C)	
Storage Temperature	-4° ~ 140°F (-20° ~ 60°C) 20~90% RH (no condensation)	



VIDEO WALL VIDEO PROCESSORS  
MULTIVIEWERS DIGITAL SIGNAGE  
EXTENDERS CONTROL CENTERS  
SCALERS WIRELESS



Toll Free 1.866.508.0269 | sales@avenview.com