



Control Your Video

**VIDEO WALLS VIDEO PROCESSORS**  
**VIDEO MATRIX SWITCHES**  
**EXTENDERS SPLITTERS WIRELESS**  
**CABLES & ACCESSORIES**

## PRODUCT MANUAL

### Model: HDM2-PROWALL-T4K



4 Screen Videowall Processor with 4K@60,  
IR, RS-232, Audio and Rotation Support

**Copyright**

© 2017 Avenview Inc. All rights reserved.

The contents of this document are provided in connection with Avenview Inc. ("Avenview") products. Avenview makes no representations or warranties with respect to the accuracy or completeness of the contents of this publication and reserves the right to make changes to specifications and product descriptions at any time without notice. No license, whether express, implied, or otherwise, to any intellectual property rights is granted by this publication. Except as set forth in Avenview Standard Terms and Conditions of Sale, Avenview assumes no liability whatsoever, and claims any express or implied warranty, relating to its products are strictly prohibited.



## TABLE OF CONTENTS

1.1	IMPORTANT SAFEGUARDS.....	3
1.2	SAFETY INSTRUCTIONS.....	3
1.3	REGULATORY NOTICES FEDERAL COMMUNICATIONS COMMISSION (FCC).....	4
2.	INTRODUCTION AND FEATURES.....	5
2.1	PACKAGE CONTENTS.....	6
2.2	BEFORE INSTALLATION.....	7
2.2	CABLE SPECIFICATIONS.....	7
3.	INSTALLATION HDM2-PROWALL-T4K .....	8
3.1	APPLICATION DIAGRAM.....	9
3.2.	PANEL DESCRIPTION .....	10
3.2.1	FRONT PANEL (HDM2-PROWALL-T4K) .....	10
3.2.2	REAR PANEL (HDM2-PROWALL-T4K) .....	10
4.	SUPPORTED RESOLUTION .....	11
5.	OPERATION (HDM2-PROWALL-T4K) .....	12
6.	EDID LEARNING.....	22
	SECTION 7: SPECIFICATIONS.....	23



## SECTION I: GETTING STARTED

### I.1 IMPORTANT SAFEGUARDS

**Please read all of these instructions carefully before you use the device. Save this manual for future reference. Avenview warranty certificate please refer to page #26**

**Warranty does not include:-**

- Any product, on which the serial number has been defaced, modified or removed.
- Damage, deterioration or malfunction resulting from:
  - Accident, misuse, neglect, fire, water, lightning, or other acts of nature, unauthorized product modification, or failure to follow instructions supplied with the product.
  - Repair or attempted repair by anyone not authorized by us.
  - Any damage of the product due to shipment.
  - Removal or installation of the product.
  - Causes external to the product, such as electric power fluctuation or failure.
  - use of supplies or parts not meeting our specifications.
  - Normal wear and tear.
  - Any other causes which does not relate to a product defect.
- Removal, installation, and set-up service charges.

### I.2 SAFETY INSTRUCTIONS





The **HDM2-PROWALL-T4K** 4 screen display videowall processor has been tested for conformance to safety regulations and requirements, and has been certified for international use. However, like all electronic equipments, the HDM2-PROWALL-T4K should be used with care. Read the following safety instructions to protect yourself from possible injury and to minimize the risk of damage to the unit.

- ⚠ Do not dismantle the housing or modify the module.
- ⚠ Dismantling the housing or modifying the module may result in electrical shock or burn.
- ⚠ Refer all servicing to qualified service personnel.
- ⚠ Do not attempt to service this product yourself as opening or removing housing may expose you to dangerous voltage or other hazards
- ⚠ Keep the module away from liquids.
- ⚠ Spillage into the housing may result in fire, electrical shock, or equipment damage. If an object or liquid falls or spills on to the housing, unplug the module immediately.
- ⚠ Have the module checked by a qualified service engineer before using it again.
- ⚠ Do not use liquid or aerosol cleaners to clean this unit. Always unplug the power to the device before cleaning.



Note: This equipment has been tested and found to comply with the limits for a Class A digital device, pursuant to part 15 of the FCC Rules. These limits are designed to provide reasonable protection against harmful interference when the equipment is operated in a commercial environment. This equipment generates, uses, and can radiate radio frequency energy and, if not installed and used in accordance with the instruction manual, may cause harmful interference to radio communications. Operation of this equipment in a residential area is likely to cause harmful interference in which case the user will be required to correct the interference at his own expense.

Properly shielded and grounded cables and connectors must be used in order to meet FCC emission limits. Avenview is not responsible for any radio or television interference caused by using other than recommended cables and connectors or by unauthorized changes or modifications to this equipment.

Warning symbols	Description
	<p>ONLY USE THE PROVIDED POWER CABLE OR POWER ADAPTER SUPPLIED. DO NOT TAMPER WITH THE ELECTRICAL PARTS. THIS MAY RESULT IN ELECTRICAL SHOCK OR BURN.</p>
	<p>DO NOT TAMPER WITH THE UNIT. DOING SO WILL VOID THE WARRANTY AND CONTINUED USE OF THE PRODUCT.</p>
	<p>THIS WARNING SYMBOL MEANS DANGER. WHEN THIS SYMBOL IS PLACED, YOU ARE IN AN ENVIROMENT THAT CAN CAUSE BODILY INJURY.</p>
	<p>THE VIDEO BOARDS ARE VERY SENSITIVE TO STATIC. PLEASE ENSURE IF RACK MOUNTED OR INSTALLED ON A SURFACE, IT SHOULD BE IN A GROUNDED ENVIRONMENT.</p>



**⚠ WARNING**

Read & understand user guide before using this device.

Failure to follow the proper installation instructions could result in damage to the product and preventing expected results.



## 2. INTRODUCTION

The Avenview **HDM2-PROWALL-T4K** 4 port HDMI video wall processor with UHD 4K@60 4:4:4 support, its one of the first videowall processor to accept an input of upto TRUE 4K@60 from a source device. Equiped with 4 four HDMI outputs processing the input signal pixel to pixel with a vivid, clear and crisp picture without resolution loss onto Full HD displays.

This unit can be used as a dedicated 2x2 videowall at UHD 4K@60 or 1080p with rotation, different preset or custom layouts. Bonus feature this unit can support cascading through software to allow using multiple units to create a larger videowall 3x3 with stunning clarity using the same UHD 4K@60 input for displaying content on your flat panel displays or projectors.

Bundled with its own control software the user can simply configure different layouts for any solution such as 1x1, 1x3, 1x4, 2x2 and mosiac. The **HDM2-PROWALL-T4K** can accept both DVI/HDMI source inputs/outputs, made with the embedded scaler that converts signals from either DVI/HDMI source to match the native resolution of monitors, flat panel displays, projectors connected to the 4 outputs connectors. Each output resolution can be selected for each display, also settings up to FULL HD 1080p and PC resolutions WUXGA (1920x1200).

Recommended applications include retail digital signage, commercial applications and broadcasting/education/ surveillance systems etc.

## FEATURES

- Four DVI/HDMI outputs from 640x480 to 1920x1080, 1920x1200;
- Supports HDMI/DVI input, from 640x480 to 1920x1080@60,UHD 4K@60 4:4:4, interlaced or progressive;
- HDCP compliant (HDCP 2.2 input/HDCP 1.4 output);
- Several image parameters and layouts can be saved in computers and can be loaded for later use
- Firmware upgradable for new features and technology enhancements;
- Supports IR remote control;
- Supports input rotation 1080p resolution only;
- Software control through USB and Ethernet;
- Resize, position, zoom output video;
- User-selectable output settings, up to 1920x1080,1920x1200;
- Supports UHD 4K@60 input with layout only in 2x2 mode;
- Supports Cascading through software multiple units 3x3 mode;
- Each DVI/HDMI output has an independent controllable display area;
- Supports remote control to switch 1x1, 2x2, 1x3 rotate, and 1x4 rotate mode;
- Each output can support OSD control for edge correction;
- Compact size;



## 2.1 PACKAGE CONTENTS

Before you start the installation of the HDM2-PROWALL-T4K, please ensure that the packaging has the listed items below.

1	MODEL: HDM2-PROWALL-T4K	QTY x 1	
3	INSTALLATION CD	QTY x 1	
4	IR REMOTE	QTY x 1	
5	POWER BRICK (12V 2A) + C7 Either Standard US power connector or International power connector based on order request. (UK,EU,AUS)	QTY x 1	
6	RACKMOUNT SYSTEM Right Rack Ear Left Rack Ear	QTY x 1 x 1	
7	User's Manual		

## 2.2 BEFORE INSTALLATION

### ATTENTION

- Place the product on an even and stable surface. If the product falls, it may cause an injury to a person or malfunction.
- Do not place the product in high temperatures (over 50°C), or low temperature (under 0°C) or high humidity.
- Use the DC power adapter with correct specifications. If inappropriate power supply is used then it may cause a fire.
- Take care when connecting units to the electrical power circuit, incase the maximum rated circuit is not overloaded
- Installation of the equipment must comply with local and national electrical codes.
- Do not twist or pull by force ends of the UTP /HDMI cable. It can cause malfunction.
- Keep the device away from water. If the unit becomes wet, power off immediately.
- To prevent airflow restriction, allow clearance around the ventilation openings to be at least: ONE Inch (25.4 mm).
- Unauthorized changes or modifications could void the user's authority to operate the equipment.
- Before you work on any equipment, be aware of the hazards involved with electrical circuitry and be familiar with standard practices for preventing accidents.



## HDMI Cable

To achieve best results with our HDM2-PROWALL-T4K we highly recommend a Premium High Speed HDMI Cables and Premium High Speed HDMI Cables with Ethernet. To identify the cable is certified it will carry a special anti-counterfeit label to differentiate them from other HDMI cables. See picture below.

Premium High Speed Certified HDMI Cables with full 18Gbps 4K (End to End) HDMI Cables support full UHD with Deep Color and High Dynamic Range support . These next generation 4K HDMI cables are also the ONLY HDMI cables specifically designed for systems integrators, corporate, government, medical and other demanding business environments.

Performance features: full UltraHD 4K@60Hz 4:4:4 chroma sampling and 18Gbps bandwidth rating (End to End), is integrated with exclusive commercial features: advanced active chip technology to deliver a full 4K 18Gb signal with 4:4:4 Color Space signal.



## Specifications

Performance Grade: Best  
 Connector Type 1: HDMI Male  
 Connector Type 2: HDMI Male  
 Bandwidth or Speed: 18Gbps (End to End), HDR Support  
 Resolution: 4K @ 60Hz 4:4:4  
 Gauge: Up to 15ft: 26AWG. 20ft and up: 24AWG, Please note: Lengths 25ft, 35ft, 50ft  
 Center Conductor: 99.9% High Purity Copper  
 Connector Finish: 24K Gold Plated  
 Shielding: Triple Shielded, Inner 100% Aluminum Mylar Wrap, Outer 100% Aluminum Mylar Wrap, 85% Tinned Copper Braid  
 Cable Outer Diameter: 0.33" (8.5 mm)  
 Jacket Type: PVC  
 Supports High Dynamic Range (HDR)  
 Supports Deep Color and x.v. Color

HDMI ATC Certified: Yes  
 HDCP and CEC Compliant: Yes  
 Category 2 Certified: Yes  
 Ethernet Capability: Yes  
 Supports Audio Return Channel: Yes  
 3D Ready: Yes  
 Longer Distance Capability: Yes  
 UL Rated: Yes  
 UL Rating: CL3  
 RoHS Compliant: Yes  
 Temperature Rating: 75 deg C  
 Voltage: 30V





### 3. INSTALLATION (HDM2-PROWALL-T4K )

To setup the Avenview HDM2-PROWALL-T4K please follow the steps below to experience the best results:

1. Please ensure the connecting devices are powered off before proceeding.
2. Connect the HDMI video source to the INPUT(HDMI IN)- Example Bluray or 4K Digital player or Camera
3. Connect (4) four DVI/HDMI cables to the desired HDMI Displays.
4. Please ensure all connections are seated securely and placed in the corresponding connections.
5. Connect the +12V 2A DC power supply to the HDM2-PROWALL-T4K.
6. Firstly Power on the HDMI Source, after the boot sequence and the resolution is sync.
7. Power on the compatible HDMI displays and experience the clear images on the 1 to 4 displays connected in the desired mode.

#### GENERAL INSTRUCTIONS

1. Before you begin the software installation from the CD provided or latest CS from the website, please ensure the HDM2-PROWALL-T4K is connected to AC power and your PC via USB or connected to the same network as the unit. When you power off/cycle HDM2-PROWALL-T4K, please don't repower at least 5 to 10 seconds after to allow power capacitors to discharge.
2. PC Requirements-Windows® XP/Windows Vista®/Windows® 7, compatible with Windows® 8/10
3. Ensure your Laptop or desktop is plugged in to AC power during the update process. It is not recommended to use only battery power during the installation. Do not remove power at any time during the process as this could lead to incomplete results. **See Section 5 Operation Method B Software control for more info.**



# HDM2-PROWALL-T4K

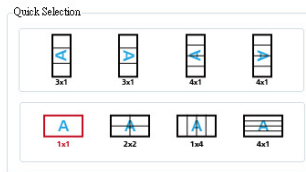
LAYOUT 1- 2x2 VIDEOWALL

**CABLE INDEX**

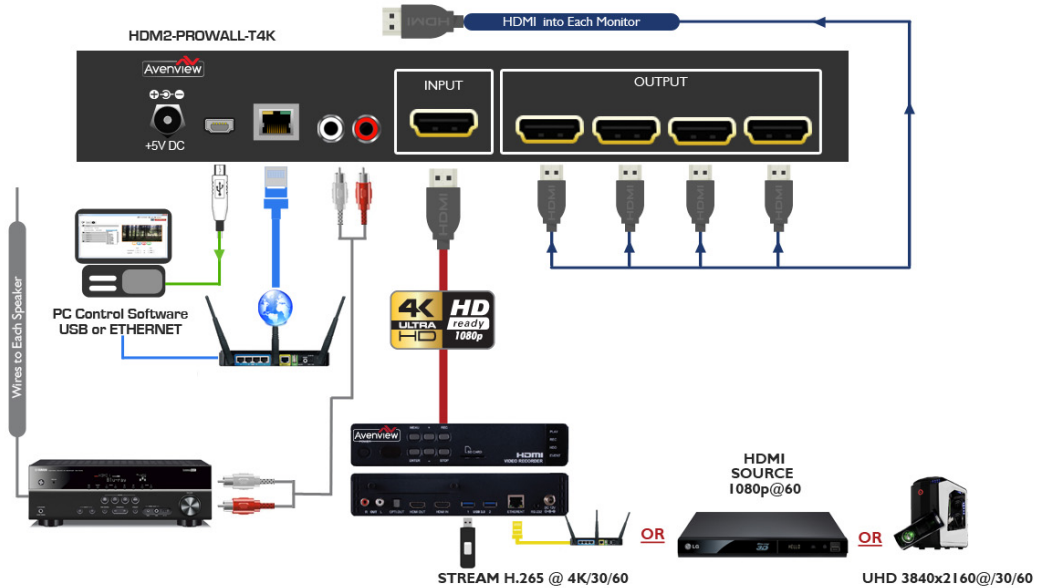
- Output ■
- Input / Source ■
- Audio ■
- USB ■
- CAT-5 / CAT-6 ■



8 QUICK STYLE LAYOUTS



IR REMOTE



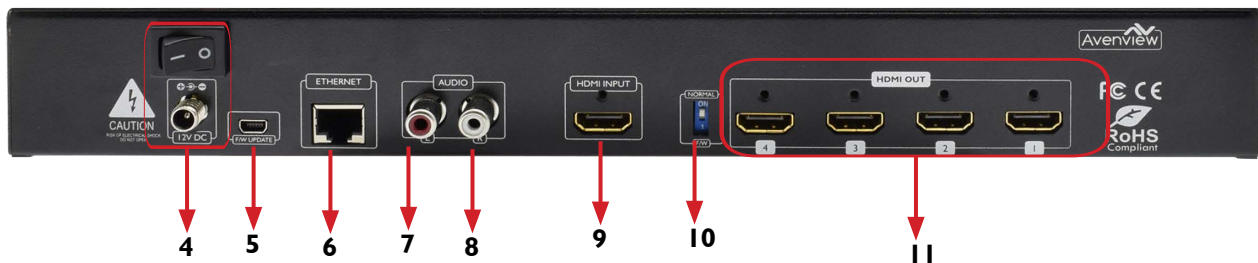
## 3.2. PANEL DESCRIPTION

### 3.2.1 FRONT PANEL (HDM2-PROWALL-T4K)



<p><b>1. IR SENSOR:</b> IR sensor for receiving the IR commands from the supplied 15 Key IR remote.</p>	<p><b>2. POWER STATUS:</b> Power indicator LED will illuminate RED when the supplied 12V/2A power brick is connected.</p>
<p><b>3. CONTROL BUTTONS:</b> Button 1: Reserved          Button 2: Reserved          Button 3 – Previous: To recall previous rotation setting          Button 4 – Activate to 1x1 and 2x2 4K@60          Button 5 – Activate to 3x1 -90° and 90° 1080p only          Button 6 – Activate to 4x1 -90° and 90° 1080p only</p>	

### 3.2.2 REAR PANEL (HDM2-PROWALL-T4K)



<p><b>4. POWER JACK:</b> 12V DC Screw Power Jack secured and Power switch ON/OFF.</p>	<p><b>5. USB Virtual COM:</b> Connect via PC for direct connect with packaged software.</p>
<p><b>6. ETHERNET:</b> Ethernet Control Port for controlling the unit functions and layout via PC with packaged Control software.</p>	<p><b>7. Stereo audio output -L:</b> Analog audio out to Speakers or RCVR</p>
<p><b>8. Stereo audio output -R:</b> Analog audio out to Speakers or RCVR</p>	<p><b>9. INPUT:</b> HDMI 2.0 Input connector for connecting source device (ex.Digital player)</p>
<p><b>10. DIP SWITCH:</b> To activate Firmware update. Default: Mode OFF</p>	<p><b>11. OUTPUT 1-4:</b> HDMI Output connector for connecting 4 display/screens or projector.</p>



#### 4. SUPPORTED RESOLUTION

Input	Output
720x480@30Hz	640x480@60Hz
720x480@60Hz	720x480@60Hz
720x576@30Hz	720x576@60Hz
720x576@60Hz	800x600@60Hz
1280x720@60Hz	1024x768@60Hz
1920x1080@30Hz	1280x720@60Hz
1920x1080@60Hz	1280x768@60Hz
UHD 4K@30Hz	1280x960@60Hz
UHD 4K@60Hz (4:2:0 10bits)	1280x1024@60Hz
UHD 4K@60Hz (4:2:2 10 bits)	1366x768@60Hz
UHD 4K@60Hz (4:4:4 8bits)	1440x900@60Hz
	1680x1050@60Hz
	1920x1080@60Hz
	1920x1200@60Hz
	1600x1200@60Hz



## 5. OPERATION (HDM2-PROWALL-T4K )

### Method A: IR Remote Control



Button	Function
POWER	Power On/Off the video wall processor
AUDIO +	Increase Audio Volume
AUDIO -	Decrease Audio Volume
	Fast switch to Full Screen 1x1
	Fast switch to VW3x1 (+90°)
	Fast switch to VW3x1 (-90°)
	Fast switch to VW2x2
	Fast switch to VW4x1 (+90°)
	Fast switch to VW4x1 (-90°)
PREVIOUS	Recall previous rotation setting
MUTE	Mute the RCA Stereo jacks
MENU	Call OSD menu and confirm
Factory Reset	Factory default reset



**NOTE:** IR remote controls use infrared light to control TVs, and this unit players and other electronic devices. When an infrared remote control is not working, or is working intermittently, the cause might be interference.

#### Ambient Light

Ambient light, especially sunlight, can overload or desensitize the sensor on the electronic device and cause it to miss signals sent from the remote control. Devices that use infrared to communicate with the remote control should be shielded from bright, direct light.

#### Other Remotes

If you use several infrared remote controls at once, they can interfere with each other by scrambling the IR codes that are being sent to the device. Separate your infrared receiving devices to avoid this interference.

#### Fluorescent Lamps with Electronic Ballasts

Electronic ballasts regulate power supplies in newer fluorescent lamps and bulbs. These ballasts can modulate high frequency light coming from the lamp or bulb and confuse the receiving device



## Method B: Software Operation

### System Requirement and Precautions

1. When power cycling or powering off the unit, please wait at least 5 to 10 seconds delay to allow power capacitors to discharge. Then power on device
2. The HDM2-PROWALL-T4K packaged software control program is compatible with Microsoft Windows 98, 2000, XP, 7 through the interface of USB virtual com control.
3. Before double clicking on the icon of the software, make sure you have secured the connection between your computer USB port and the DVI-PROWALL-4X.

### Start the software control program

STEP 1: Click on the executable file, the following dialog box show on screen;

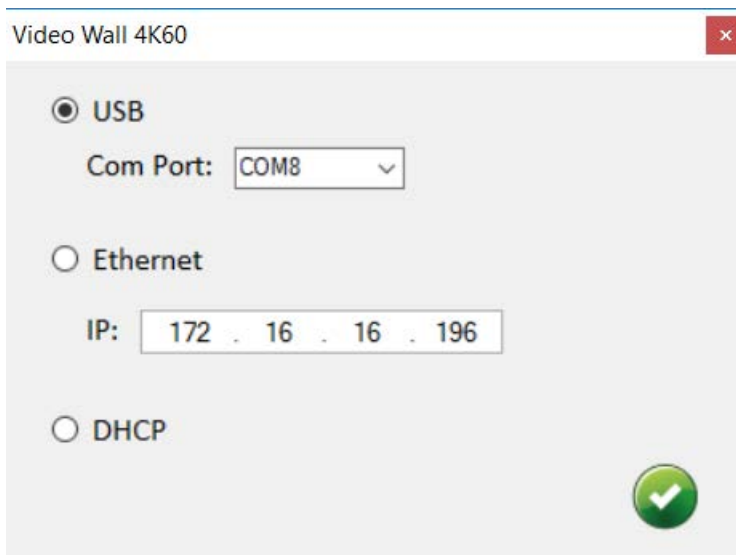
STEP 2: Please ensure when using Microsoft Windows 7, run as administrator;

STEP 3: Please prepare which method of control either -

**USB Mode:** Use USB to connect the port on device and to the computer.

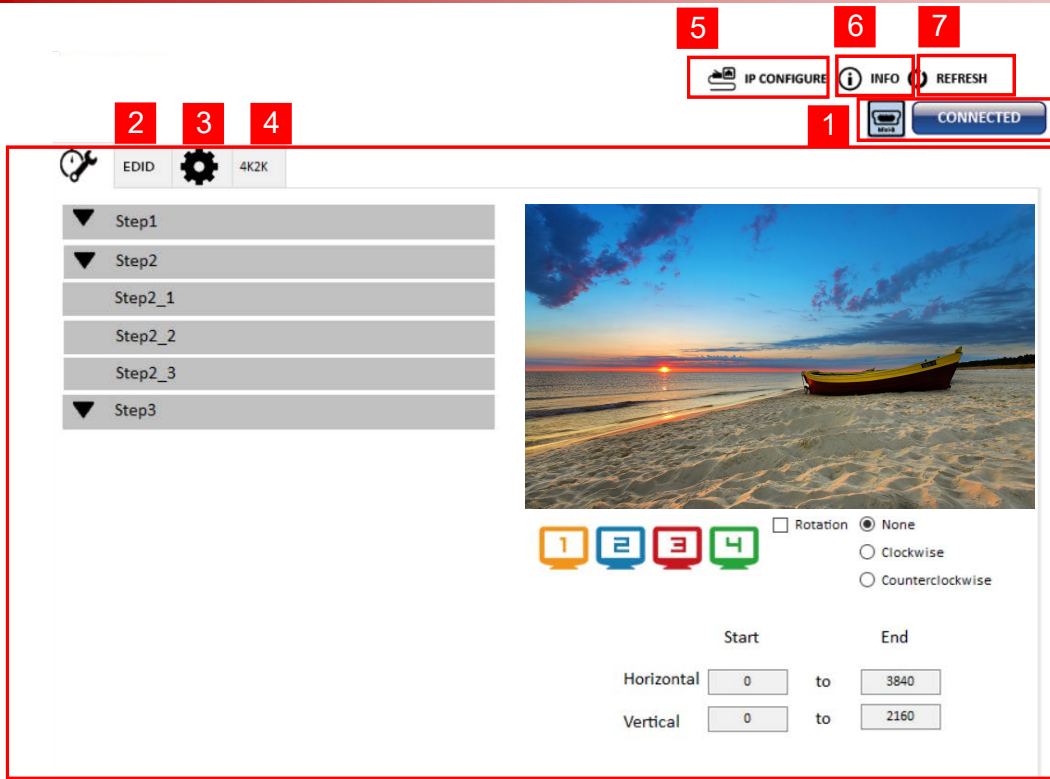
Select the correct Com port and click the OK button.

**Ethernet Mode:** Enter the device IP address and click the OK button.



After the software control setting is acquired, the main control interface will pop up.





## Control Interface

### 1. Connection Status:

Show the current information and status. **USB control Mode** selected icon will show 

**Ethernet control Mode** selected icon will show 

### 2. Quick Selection:

The user can select the screen resolution, screen management and split screen. Step1 click the Main window picture and proceed to set up the corresponding layout. The different colored frames represents the different connected displays/screen on the outputs. The H/V information shows the position of output on display/screens.

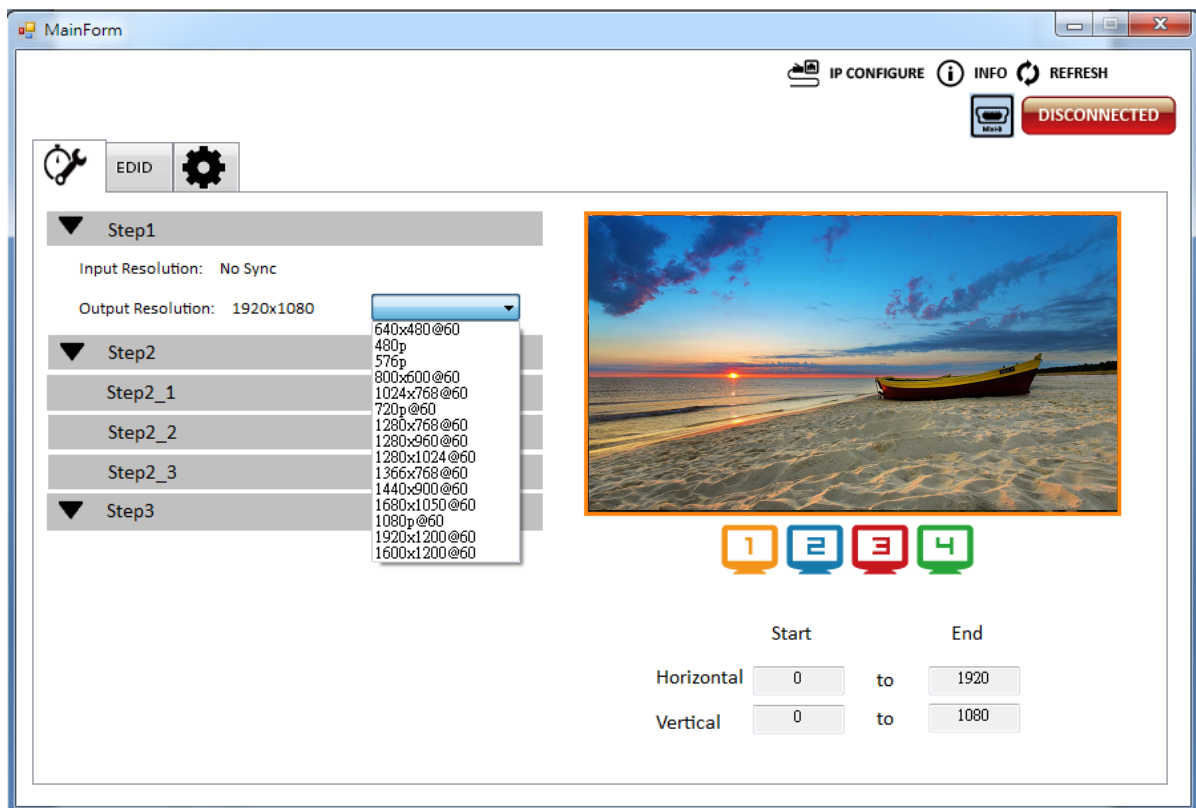


	Start		End
Horizontal	0	to	1920
Vertical	0	to	1080



(1) Step 1

Set the output resolution. You can choose the design display icon to select the output port and setup resolution. When setting the different resolution, the H/V numbers will change to match the selection.



(2) Step 2

Three modes available - set the output TV resolution, position, size and split screen. The details of different mode are described in step 2-1, 2-2 and 2-3.

\* Notice Changing another mode, you need to revert to step 2 to make the desired selection

- Quick Selection**
- From file**
- Custom define**

(3) Step 2-1

**Quick Selection mode** in step 2, this window will automatically pop-up. In this mode, you can select default screen split and rotate screen (rotate screen only supports of 720p or 1080p resolution).

- 3x1**: This mode will divide the screen into 3 parts and rotate the image. The last section shows the full screen.
- 4x1**: The mode will divide the screen into 4 parts and rotate the image.

When the 3x1 or 4x1 mode is selected, the picture in the right part of control interface will show a white circle. You can slide this white circle to resize the output screen. In addition, directly input the number to adjust the coordinate.

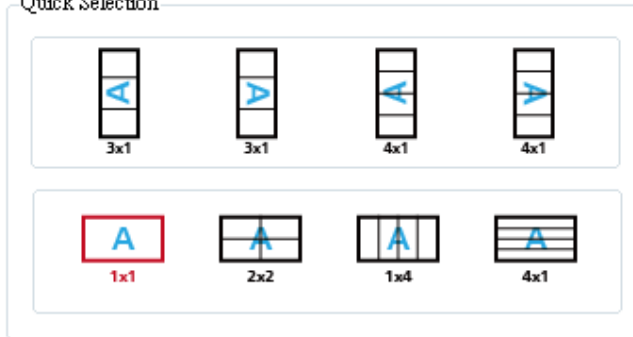
NOTE: UHD 4K@60 input resolution can only support 2x2 Mode, unless using multiple units.





## Step2\_1

Quick Selection



H Start:  Width:    
V Start:  Height:

### (4) Step 2-2

You can load and read configuration from the existing file.

## Step2\_2

### (5) Step 2-3

**Custom define mode** the user can define how to divide the image among the displays attached, also the part you want to show on output display/screens. To accurately create sections select the Grid button to show grid lines. When completed and the layout is created, click  button.

Also another option is the  **SAVE AS** button to save the configuration for future use.




**Step2\_3**

Horizontal cut:   Grid  None



Vertical cut:

Number:

Coordinate	start	end
Horizontal:	<input type="text" value="0"/>	<input type="text" value="1280"/>
Vertical:	<input type="text" value="0"/>	<input type="text" value="720"/>







(6) Step 3


- Zoom In/Out:** You can increase/decrease a pixel from the edge of image by clicking   button (the edge of image has four directions). After adjusting the image, the final image will be auto-scaled to fill the screen.
- Horizontal shift/ Vertical shift: You can arbitrarily move the image on each screen in horizontal direction or vertical direction. Move one pixel at a time.

**Step3**

Up  Down  Right  Left

Zoom In/Out:    Pixel

Horizontal shift:    Pixel

Vertical shift:    Pixel

 **CLEAR**

3. EDID (Extended Display Identification Data)

(1) Learn EDID From Default

- Select Default EDID (1-5 default EDID).

Learn EDID \_\_\_\_\_

From Default

From	<input type="text" value="1.Full-HD(1080p@60)-24bit 2D &amp; 2ch"/>
To	<input type="text" value="1.Full-HD(1080p@60)-24bit 2D &amp; 2ch"/>
From	<input type="text" value="2.HD(1080i 720p@60)-24bit 2D &amp; 2ch"/>
From	<input type="text" value="3.4K2K@60-24bit 2D &amp; 2ch"/>
From	<input type="text" value="4.4K2K@30-3D-PCM &amp; 2CH"/>
From	<input type="text" value="5.4k2K@60-420-3D-PCM &amp; 2CH"/>

- Click  button to learn default EDID.

(2) Learn EDID From Display



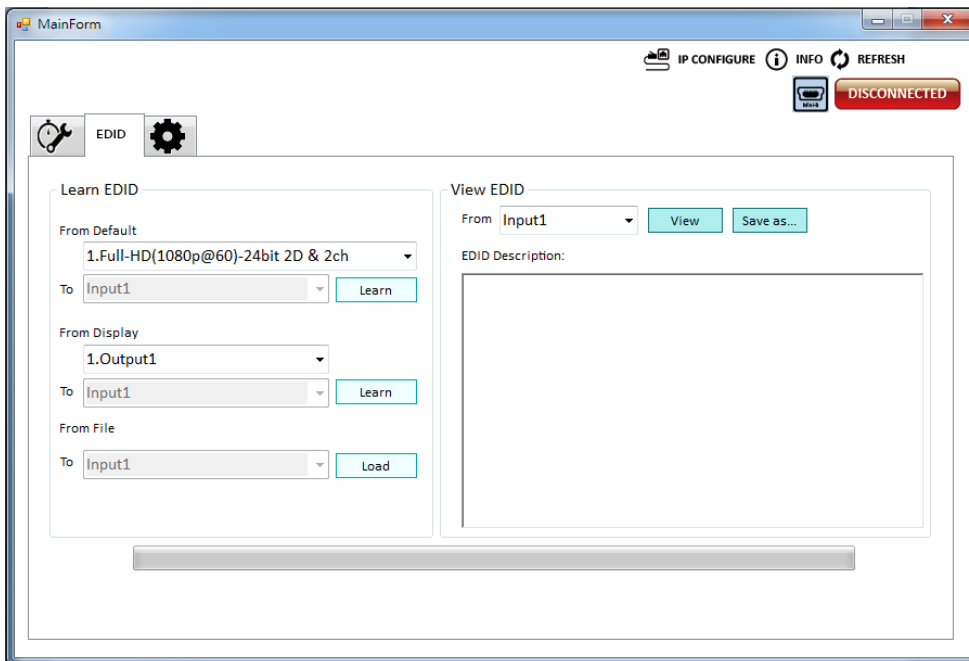
- Select the Output.
- Click **Learn** button to learn display EDID.

(3) Learn EDID From File

- Click **Load** button to select the EDID file and write it into input.

(4) View EDID content

- Select the EDID input source (Input, Output or From File).
- Click **View** button to read the EDID description and analysis.
- Click **Save as...** button to save the EDID as a file in the connected computer.



4. **Advanced Setting**

(I) Firmware Update

- Please ensure USB is connected and the connecting status is shown **CONNECTED**
- Click **Load File** button to select the firmware file with the latest version update.
- Click **Break** button.
- Recycle power.
- Click **Start** button and the firmware will start to update.

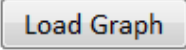



(2) Unit Name


You can set the name. Please note the string length Max -Length: (8)

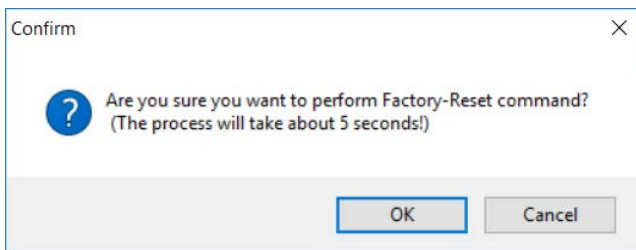
Change Graph

You can change the default graph Splash Screen on this unit.

- Click  button to select the graph.
- After loading the graph step, please click  button to write this graph into device.

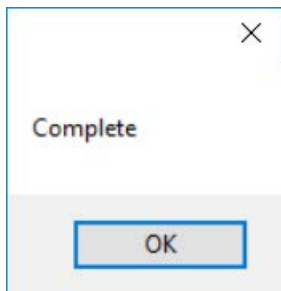
(4) Factory Reset

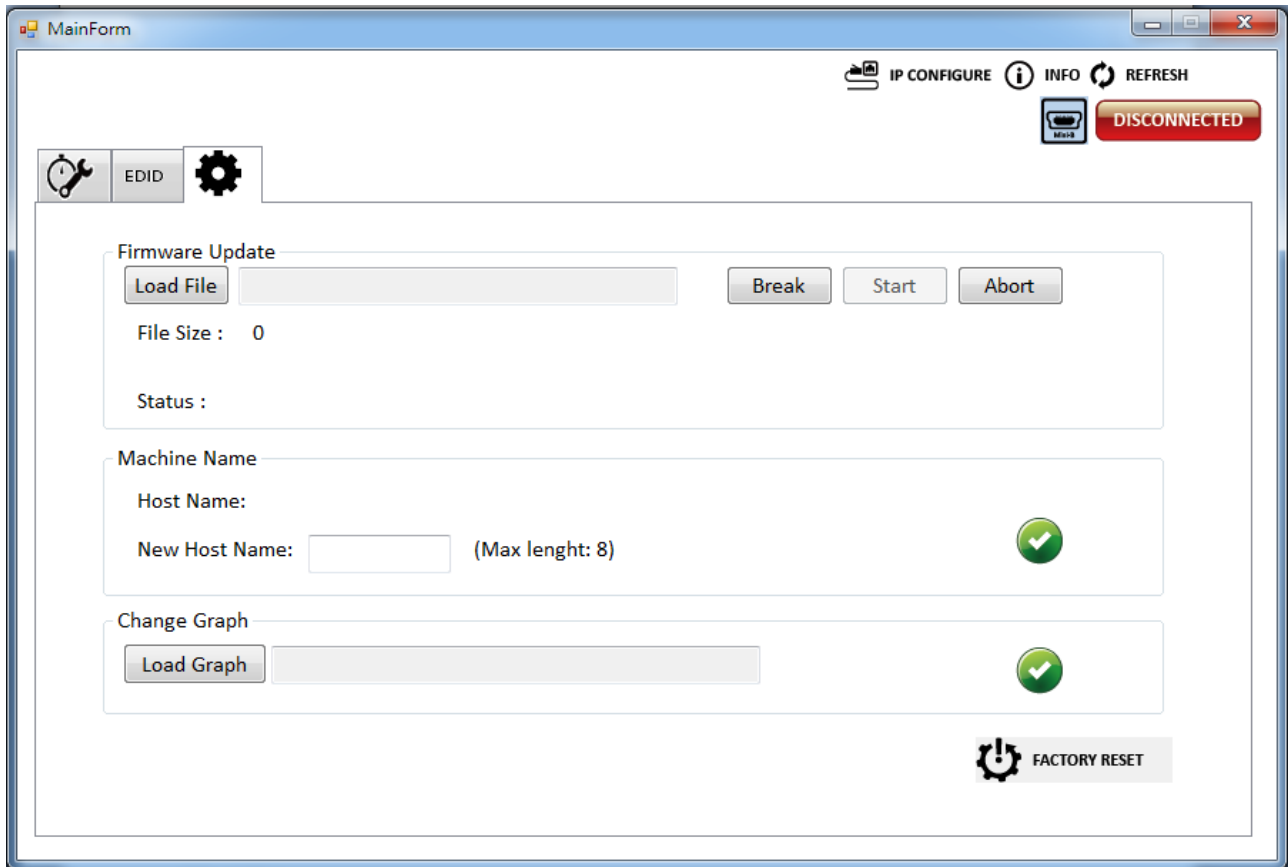
- Click  button to do factory default reset.
  - This default reset process will take about 5 seconds.




- After pop-up a dialog indicates complete, please restart this machine.

When power cycling or powering off the unit, please wait at least 5 to 10 seconds delay to allow power capacitors to discharge. Then power on device.

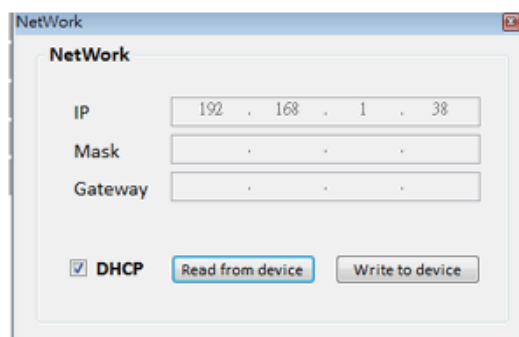
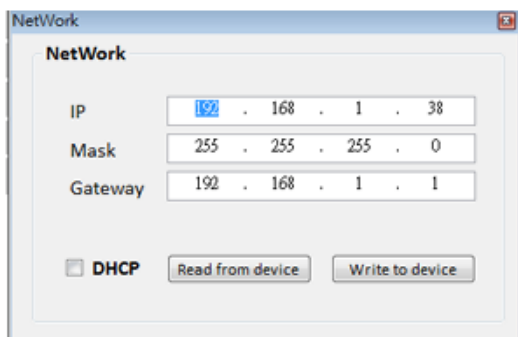




## 5. IP Configure

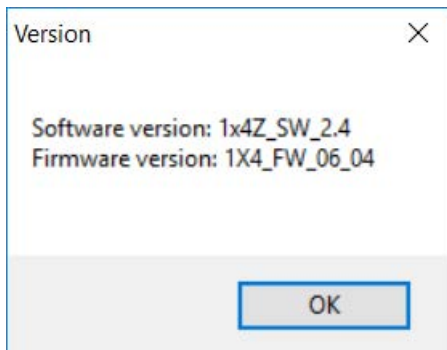
Ethernet control within an existing network (LAN) easily access the control software program. Click the  **IP CONFIGURE** button to setup network IP settings. Next read the Ethernet setting from device or manually set to device. After the IP configuration setup is completed, please restart the machine.

NOTE : To read from device, the user must be connected via USB to set the correct device IP range.




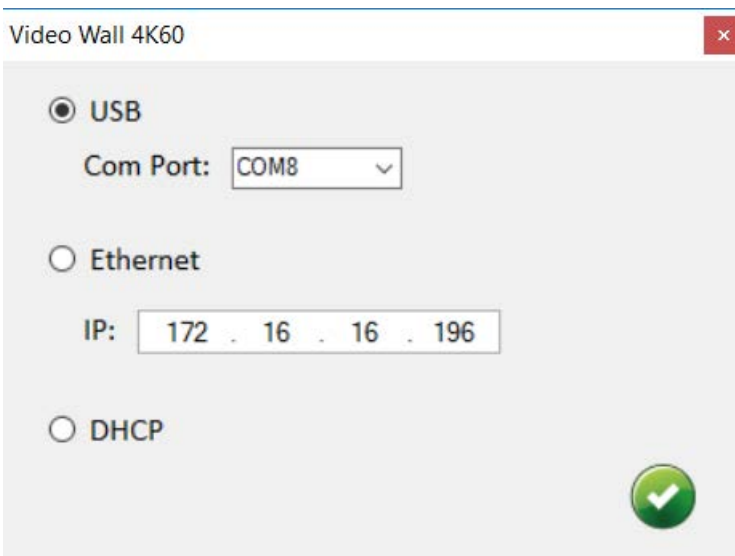
## 6. Info

Read the software and firmware version.



## 7. Refresh

This function can refresh the information settings and reloads the device method to reconnect. Click  REFRESH button to update the control method. After you click this button, pop-up dialog box appears "ReConnectForm", please select the method of connection.



## 6. EDID LEARNING

The EDID learning function is only necessary whenever the user/installer encounter problems with video/audio from the HDMI output port. HDMI sources and displays may have various levels of capability in playing audio and displaying video. The source will output the most common standard audio format and video resolutions to the connected HDMI displays. Example a 720p stereo HDMI signal output is the best choice when having audio or video problems. The user can force the HDM2-PROWALL-T4K to learn the EDID from the standard or common HDMI display within the set of 4 to ensure all displays are compatible to display the HDMI signals normally.

EDID Learning as below:

Software Control: Please refer to the **Operation Approach\ Method B: Software Control**

There are **four embedded default EDIDs** formats in this device, please see below,

1. Full-HD(1080p@60)-24bit 2D & 2CH
2. Full-HD(1080i@60)-24bit 2D & 2CH
3. 4K2K@60-24bit 2D & 2CH
4. 4K2K@30-3D-PCM & 2CH
5. 4K2K@60-420-3D PCM &2CH



## SECTION 7: SPECIFICATIONS

Model Name		HDM2-PROWALL-T4K
<b>Technical</b>		
Role of usage	4 Screen Video Wall Processor	
HDCP compliance	Yes	
Video bandwidth	Input – Single link 600MHz [1.8Gbps] Output – HDMI[2.25G to 6.75Gbps] / DVI [Single-link 4.95Gbps]	
Video support	Input - 4K2K@60 (4:4:4 8bits) Output – 1920x1080@60 / 1920x1200@60	
Video Format Support	HDMI	
Video loop-out	No	
Audio support	Yes only when using HDMI source device	
ESD protection	Human body model — ±15kV [air-gap discharge] & ±8kV [contact discharge]	
PCB stack-up	8-layer board [impedance control — differential 100Ω; single 50Ω]	
Input	1x HDMI + 1x USB + 1xRJ45	
Output	4x HDMI + 1x L/R RCA Stereo	
Control	IR remote control / Ethernet / USB (virtual com) / Front Panel	
Input TMDS signal	1.2 Volts [peak-to-peak]	
USB connector	Type A	
RJ-45 connector	WE/SS 8P8C	
<b>Enclosure</b>		
Enclosure		Metal case
Dimensions (L x W x H)	Model	288mm x 180 x 42mm [11.3" x 7" x 1.7"]
	Package	376 x 240 x 112mm [1'2" x 9.4 x 4.4"]
	Carton	590 x 510 x 405mm [1'9" x 1'7" x 1'3"]
Weight	Model	1497g [ 3.3lbs]
	Package	2.1kg [4.6lbs]
Fixedness	1U rack-mount with ears and Wall hanging holes	
Power supply	12V 2A DC SKU# 18-1018-03(Brick) + 18-1021-03 (US plug)	
Power Consumption	12W	
Operation temperature	0~40°C [32~104°F]	
Storage temperature	-20~60°C [-4~140°F]	
Relative humidity	20~90% RH [no condensation]	



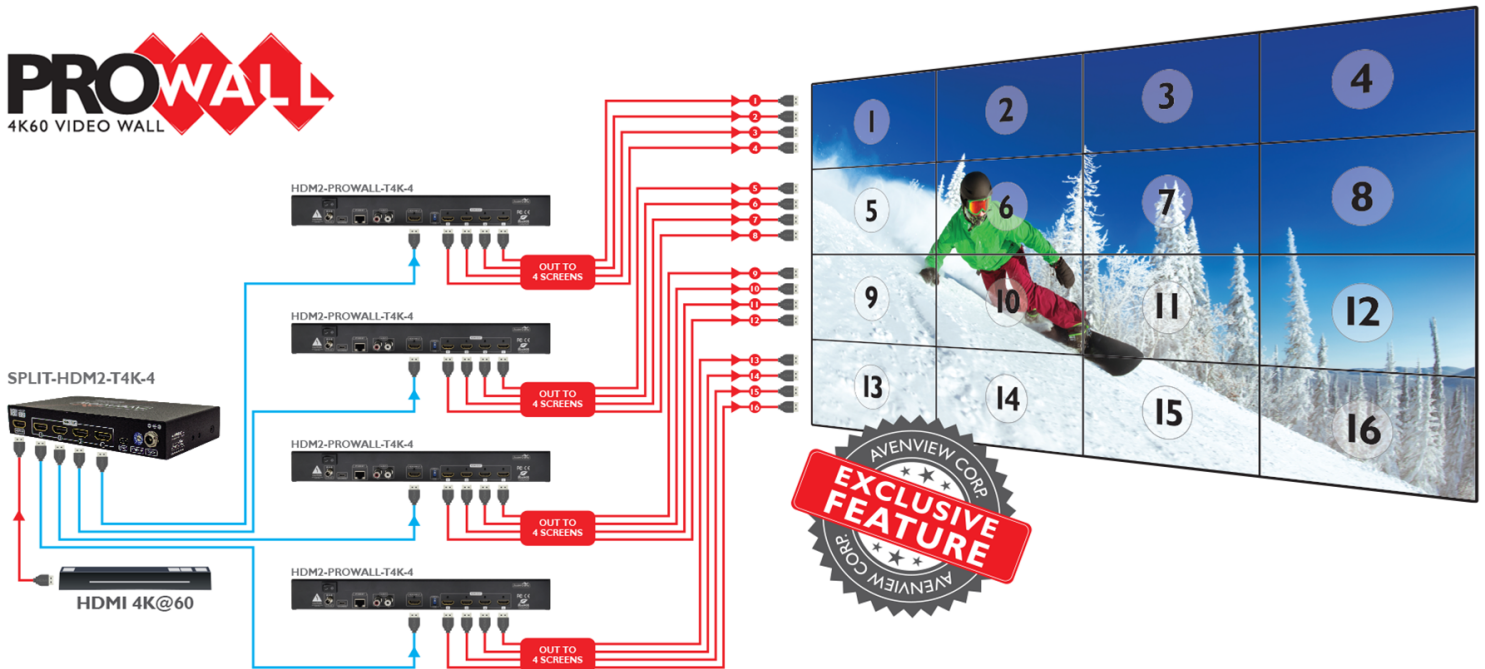


## 8. CASCADING MULTIPLE UNITS

Note The SPLIT-HDM2-T4K-4 unit allows the user to duplicate the source to be inputted into many HDM2-PROWALL-T4K to create a larger videowall than 2x2

*Please note an engineered control software is needed to perform this action.*

If you need any more info on the above solution please dont hesitate to contact us - [support@avenview.com](mailto:support@avenview.com)



PROBLEM	POSSIBLE SOLUTION
<b>NO IMAGE</b>	<ul style="list-style-type: none"> <li>• Check if ALL connection to the source and the display are in the correct position.</li> <li>• Ensure that display device supports 720p and 1080p resolution</li> <li>• Please use the supplied power supply-DC 12V 2A</li> <li>• Check LED light on Front Panel see (Section 3 Panel Description)</li> <li>• Check EDID mode see (Page 18)</li> </ul>
<b>5M OR LONGER HDMI CABLE NO 4K2K IMAGE</b>	<ul style="list-style-type: none"> <li>• Ensure the HDMI Cable is 26 or 24 AWG High quality cable and supports Ultra HD video and audio</li> </ul>

## Notice

### Resolutions

*3840×2160, also known as Ultra HD, is commonly known to be four times the resolution of 1080p, resulting from doubling both the horizontal and vertical pixel count of 1920×1080. Therefore, it has the same aspect ratio as FULL HD – 16:9. Most, but not all, 4K display devices have a native resolution of 3840×2160.*

*4096×2160, referred to as 4K DCI, is used mainly in movie production and in commercial cineplexes. There are some display devices with a native resolution of 4096×2160, but it is not as common as 3840×2160. Many 4K cameras and source devices can be set to either of the two resolutions listed.*

*In the AV world professionals will recall the SXGA PC resolution of 1280×1024, which had a non-standard aspect ratio of 5:4 when nearly every other signal was 4:3. This led to problems – displays and sources had to be carefully matched and correctly configured in order to display all of the information without unwanted cropping or stretching.*

*Please ensure your source device and the displays are fully compatible before attempting to connect and provide a full solution.*

*Extended display identification data EDID Readers -Monitor Asset Manager -<http://www.entechtaiwan.com/util/moninfo.shtm>  
High-bandwidth Digital Content Protection (HDCP) Compliance with source and display.*



## Avenview Warranty Certificate

AVENVIEW CORP. ("Avenview") warrants Avenview-branded product(s) contained in the original packaging against defects in materials and workmanship when used normally in accordance with Avenview's enclosed manual guidelines for a period of THREE (3) YEARS from the date of original retail purchase - Warranty Period. Avenview's published guidelines include but are not limited to information contained in technical specifications, user manuals and service communications.

**LABOR:** During the Warranty Period of THREE (3) YEARS, Avenview will repair or replace the product(s) at no cost using new or used parts equivalent to novel performance and reliability if the product(s) is determined to have abide by Avenview's published guidelines. Cost of Labor applicable to product(s) after Warranty Period. For labor costs, please contact [support@avenview.com](mailto:support@avenview.com).

**PARTS:** During the Warranty Period of of THREE (3) YEARS, Avenview will supply new or rebuilt replacements in exchange for defective parts of the product(s) at no cost if the product(s) is determined to have abide by Avenview's published guidelines. Cost of Parts applicable to product(s) after Warranty Period. For part(s) costs, please contact [support@avenview.com](mailto:support@avenview.com).

To obtain Warranty: (a) proof of purchase in the form of a bill of sale or receipted invoice reflecting that the registered product(s) is within warranty period must be presented to obtain warranty service; (b) product(s) must be registered at time of purchase. Failure to do so will result in applicable parts and labor charges. Returning product(s) must be shipped in Avenview's original packaging or in packaging pertaining equal degree of protection to Avenview's. Both Avenview and purchaser are responsible for freight charges and brokerages when shipping the product(s) to the receiver.

### NOT COVERED BY THIS WARRANTY

This warranty does not apply to any non-Avenview branded product(s); non-registered Avenview product(s). This warranty does not apply: (a) to cosmetic damage, including but not limited to scratches, dents and broken cords; (b) to damage caused by use with another product; (c) to damage caused by accident, abuse, misuse, liquid contact, fire, earthquake or other external cause; (d) to damage caused by operating the Avenview product(s) outside Avenview's manuals or guidelines; (e) to damage caused by service performed by anyone who is not a representative of Avenview or an Avenview authorized personnel; (f) to defects caused by normal wear and tear or otherwise due to the normal aging of the Avenview product(s), or (g) if any serial number has been removed or defaced from the Avenview product(s).

AVENVIEW IS NOT LIABLE FOR DIRECT, SPECIAL, INCIDENTAL OR CONSEQUENTIAL DAMAGES RESULTING FROM ANY BREACH OF WARRANTY OR CONDITION, OR UNDER ANY OTHER LEGAL THEORY, INCLUDING BUT NOT LIMITED TO LOSS OF USE; LOSS OF REVENUE; LOSS OF ACTUAL OR ANTICIPATED PROFITS (INCLUDING LOSS OF PROFITS ON CONTRACTS); LOSS OF THE USE OF MONEY; LOSS OF ANTICIPATED SAVINGS; LOSS OF BUSINESS; LOSS OF OPPORTUNITY; LOSS OF GOODWILL; LOSS OF REPUTATION; LOSS OF, DAMAGE TO, COMPROMISE OR CORRUPTION OF DATA; OR ANY INDIRECT OR CONSEQUENTIAL LOSS OR DAMAGE REPAIR OR REPLACEMENT AS PROVIDED UNDER THIS WARRANTY IS THE EXCLUSIVE REMEDY OF THE CONSUMER.

Some states do not allow the inclusion or limitation of incidental or consequential damages, or allow limitations on duration implements of the Warranty Period; therefore the above limitations or exclusions may not be applicable to you. This warranty gives you specific legal rights, and you may have other rights which vary from state to state.



1100 Military Road, Kenmore, NY 14217  
1.866.508.0269







Control Your Video

## TECHNICAL SUPPORT

### CONTACT US



Phone: 1 (866) 508 0269



Email: [support@avenview.com](mailto:support@avenview.com)



#### **Avenview Canada**

151 Esna Park Drive, Unit 11-12  
Markham, ON L3R 3B1 Phone:  
+1 905 907 0525  
Email: [sales@avenview.com](mailto:sales@avenview.com)

#### **Avenview USA**

1100 Military Road  
Kenmore, NY 14217  
Phone: +1 716 218 4100 x223  
Fax: +1 866 387 8764  
Email: [sales@avenview.com](mailto:sales@avenview.com)

#### **Avenview Europe** Phone:

+31 085 2100 613  
Email: [sales@avenview.com](mailto:sales@avenview.com)

#### **Avenview Asia**

Email: [sales@avenview.com](mailto:sales@avenview.com).

#### **Disclaimer**

While every precaution has been taken in the preparation of this document, Avenview Inc. assumes no liability with respect to the operation or use of Avenview hardware, software or other products and documentation described herein, for any act or omission of Avenview concerning such products or this documentation, for any interruption of service, loss or interruption of business, loss of anticipatory profits, or for punitive, incidental or consequential damages in connection with the furnishing, performance, or use of the Avenview hardware, software, or other products and documentation provided herein.

Avenview Inc. reserves the right to make changes without further notice to a product or system described herein to improve reliability, function or design. With respect to Avenview products which this document relates, Avenview disclaims all express or implied warranties regarding such products, including but not limited to, the implied warranties of merchantability, fitness for a particular purpose, and non-infringement.